

MODEL NUMBER	DESCRIPTION	SCREWS SUPPLIED	FIGURE
BJ3157F-2C	2 HOLE, Ø .103 CLEARANCE	—	1
BJ3157F-2T	2 HOLE, THREADED 3-56 UNF-2B	—	
BJ3157F-2CS	2 HOLE, Ø .103 CLEARANCE	PAN HEAD 3-56 X 5/16	
BJ3157F-2TS	2 HOLE, THREADED 3-56 UNF-2B	PAN HEAD 3-56 X 5/16	
BJ3157F-4C	4 HOLE, Ø .103 CLEARANCE	—	2
BJ3157F-4T	4 HOLE, THREADED 3-56 UNF-2B	—	
BJ3157F-4CS	4 HOLE, Ø .103 CLEARANCE	PAN HEAD 3-56 X 5/16	
BJ3157F-4TS	4 HOLE, THREADED 3-56 UNF-2B	PAN HEAD 3-56 X 5/16	

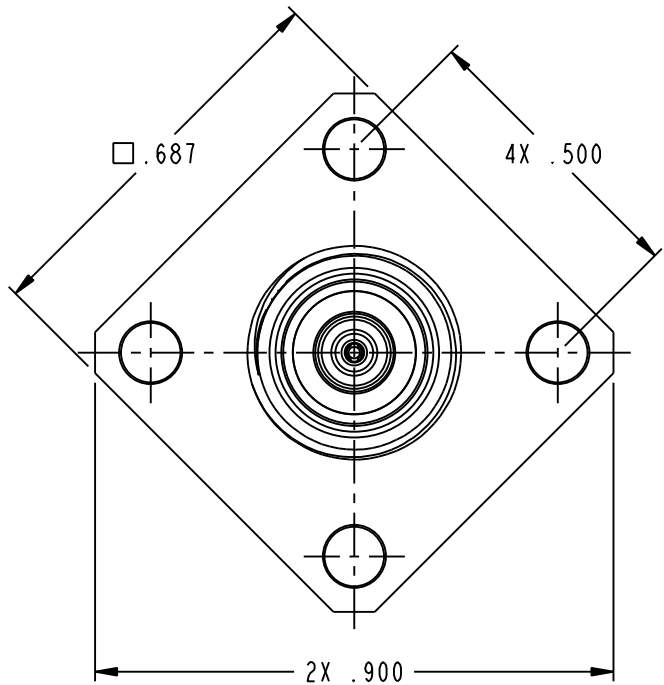
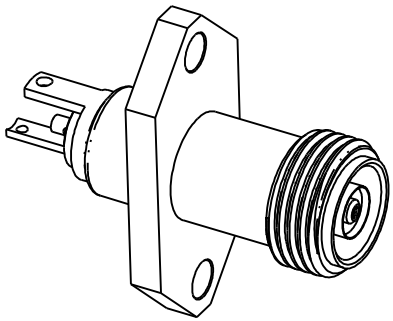
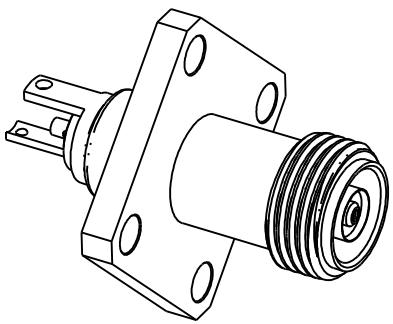


FIGURE 2  
BJ3157F-4C SHOWN

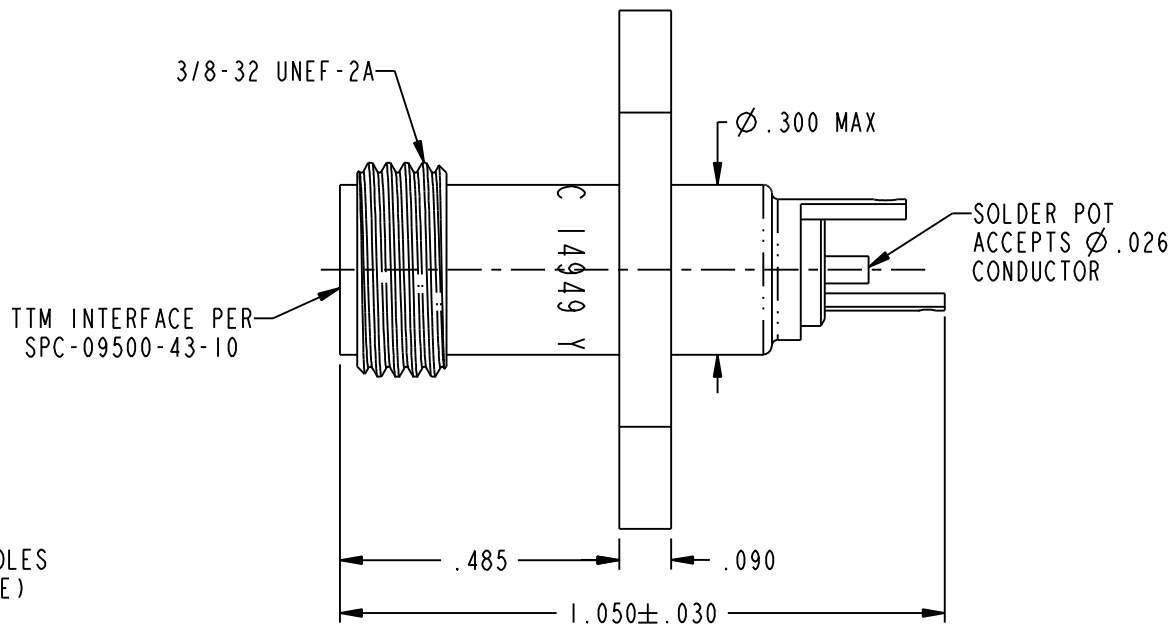
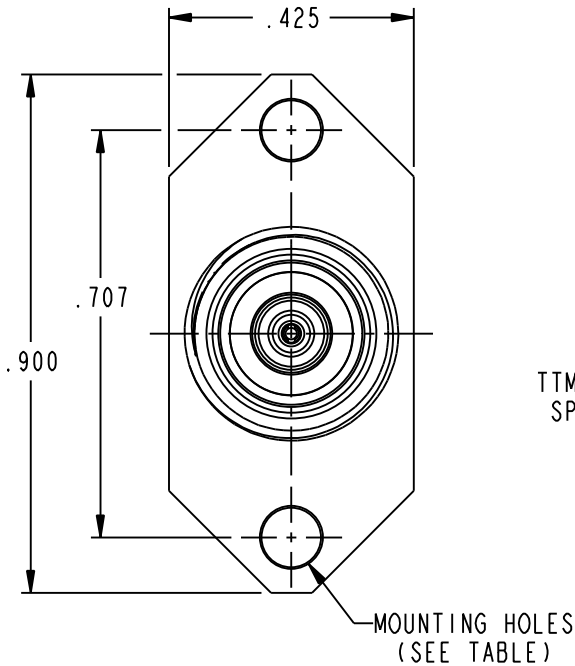


FIGURE 1  
BJ3157F-2C SHOWN

NOTES: UNLESS OTHERWISE SPECIFIED.

1. MATERIAL & FINISH:
- 1.1 BODY: NICKEL PLATED BRASS
  - 1.2 INSULATOR: PTFE (TEFLON)
  - 1.3 INTERMEDIATE CONTACT: GOLD PLATED BRASS
  - 1.4 DIELECTRIC: PTFE (TEFLON)
  - 1.5 CENTER CONTACT: GOLD PLATED BERYLLIUM COPPER
  - 1.6 SCREWS: STAINLESS STEEL

2. ELECTRICAL:
- 2.1 FREQUENCY (MAX): 500 MHz
  - 2.2 IMPEDANCE: NON-CONSTANT

3. PANEL THICKNESS (MAX): .187

4. EXAMPLE OF COMPLETE MODEL NUMBER:

BASIC PART NO. BJ3157F-2CS

NUMBER OF HOLES 2

INCLUDED PAN HEAD SCREW (OPTIONAL) C

SC = CLEARANCE  
T = THREADED

 <small>This PROPRIETARY Document is property of Cinch Connectivity Solutions. It is confidential, is not to be distributed, and is issued with the clear understanding that it is not to be traced or copied without permission and is returnable upon demand.</small> <small>INTERPRET DRAWING IN ACCORDANCE WITH ASME Y14.5-2009.</small>		TROMPETER	
	RoHS2 2011/65/EU	Title: TTM 2 OR 4 HOLE FLANGE MOUNT BULKHEAD JACK	
	UNLESS OTHERWISE SPECIFIED UNITS: INCH .XX ±.02 .XXX ±.010 ANGLES ±2°	Model No. BJ3157F-XXX	
	Size B	DO NOT SCALE DRAWING	Date: 6/29/2015 Sheet 1 OF 1

# Mouser Electronics

Authorized Distributor

Click to View Pricing, Inventory, Delivery & Lifecycle Information:

[Cinch Connectivity Solutions:](#)

[BJ3157F-2C](#)