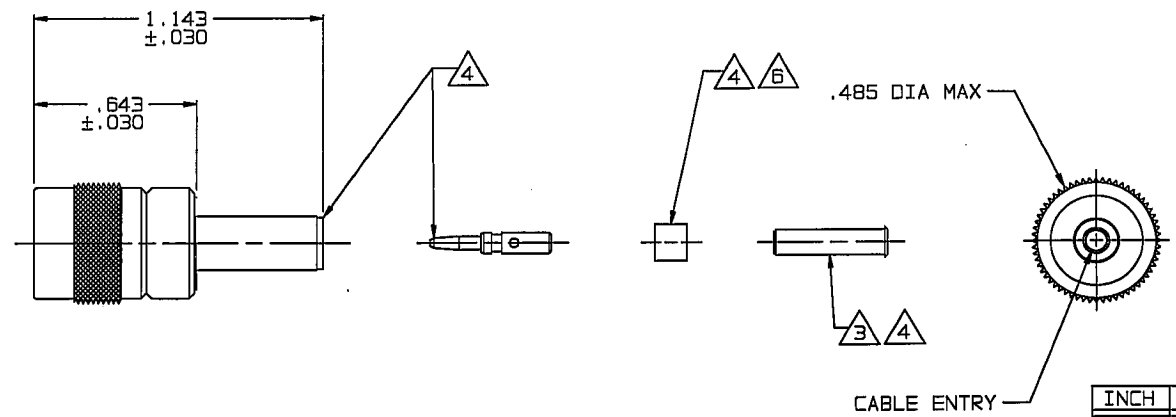


RED INDICATES ORIGINAL

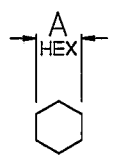
DATA CONTAINED IN THIS DOCUMENT IS PROPRIETARY TO TROMPETER ELECTRONICS INC. AND SHALL NOT BE DISCLOSED, COPIED OR USED FOR PROCUREMENT OR MANUFACTURE WITHOUT EXPRESS WRITTEN PERMISSION.

REVISIONS			1-0179		SH 1
REV	ED	DESCRIPTION	DWN	APPROVED	DATE
B	12556	DELETED: TAI-B118; ADDED: TAI-C118 FOR -013B, -015A, -022; AND RG-71 CABLE WAS CABLE GROUP -015; SEE ECO	DKC	<i>[Signature]</i>	10-19-98

DASH NO	CABLES ACCOMMODATED	A HEX	ASSEMBLE PER	
-001	RG-178, -198	.178	TAI-A118	
-002	HEWLETT-PACKARD 8120-1107	.197		
-003	RG-174, -188, -316	.178		
-004	RG-179, -187			
-005	MIL 17/094			
-006	GRUMMAN-GCB75GP1 DBL-SHLD RG-188	.197		
-007	275-3991 MICRODOT			
-008	RG-195, -180 421-111 ESSEX	.178		
-009	8218 BELDEN 21-597 ESSEX			
-010	RG-122			
-011	RG-58, -141, -303 21-537 ESSEX	.213	TAI-C118	
-012	RG-55, -142, -223 RG-400			
-013	RG-59		TAI-A118	
-013A	TCC-75-2	.255		
-013B	RG-62		TAI-C118	
-014	8212 BELDEN			
-015	730A LUCENT		TAI-A118	
-015A	RG71	.290		
-016	724, LUCENT 8281 BELDEN	.324	TAI-A118	
-017	RG-6	.344		
-018	9268 BELDEN	.255		
-019	8279 BELDEN			
-020	9248 BELDEN	.290		
-021	88240 BELDEN	.213		
-022	88241, 89269 BELDEN	.255		TAI-C118
-023	89108 BELDEN			TAI-A118
-024	89120 BELDEN	.290		
-025	734A, LUCENT	.255		
-026	735A, LUCENT			
-027	KS19224L2, LUCENT	.178		



-001 SHOWN



RECOMMENDED
HEX CRIMP

INCH	MM
.005	0.13
.030	0.76
.178	4.52
.197	5.00
.213	5.41
.255	6.48
.290	7.37
.324	8.23
.344	8.74
.485	12.32
.643	16.33
1.143	29.03

5. RF COAXIAL TPS FULL CRIMP CABLE PLUG

4 PIN CONTACT, SLEEVE ASSY, CRIMP SLEEVE & CONTACT SUPPORT BUSHING ARE SUPPLIED LOOSE

3 SLEEVE ASSY REQUIRED ON -001 THRU -007 & -027 ONLY

2. FINISH: TFS-1A (NICKEL)

1. ALL DIM ARE IN INCHES

6 CONTACT SUPPORT BUSHING REQUIRED ON -013B, -015A & -022 ONLY

NEXT ASSY

QTY	DESCRIPTION		PART NUMBER	ITEM
TOL UNLESS SPECIFIED .XX ± .XXX ± .005 .XXXX ± ANGLES ±	TROMPETER ELECTRONICS, INC.		PL50C	
DWN	DKC	10-13-98	MATERIAL	CODE IDENT
CHK	WM	10-15-98	14949	DRAWING NO.
ENGR				1-0179
APPR		10-19-98	SCALE 2/1	DATE 12-1-89
				SHEET 1 OF 2

Mouser Electronics

Authorized Distributor

Click to View Pricing, Inventory, Delivery & Lifecycle Information:

[Cinch Connectivity Solutions:](#)

[PL50C-010](#) [PL50C-003](#)