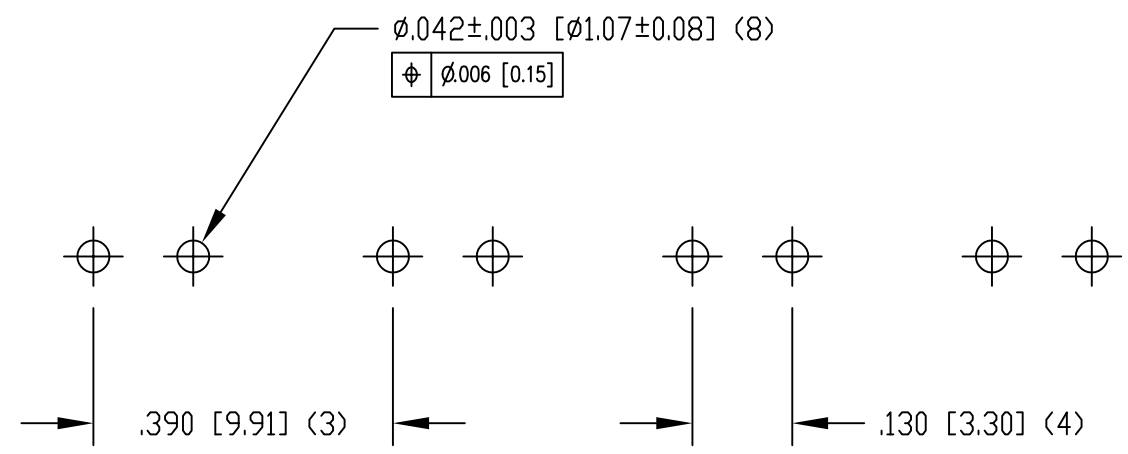
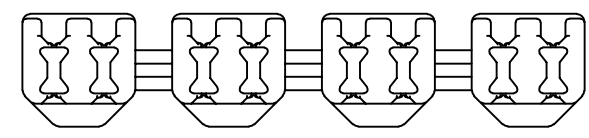
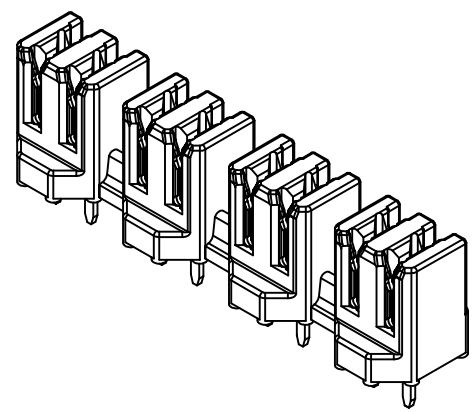
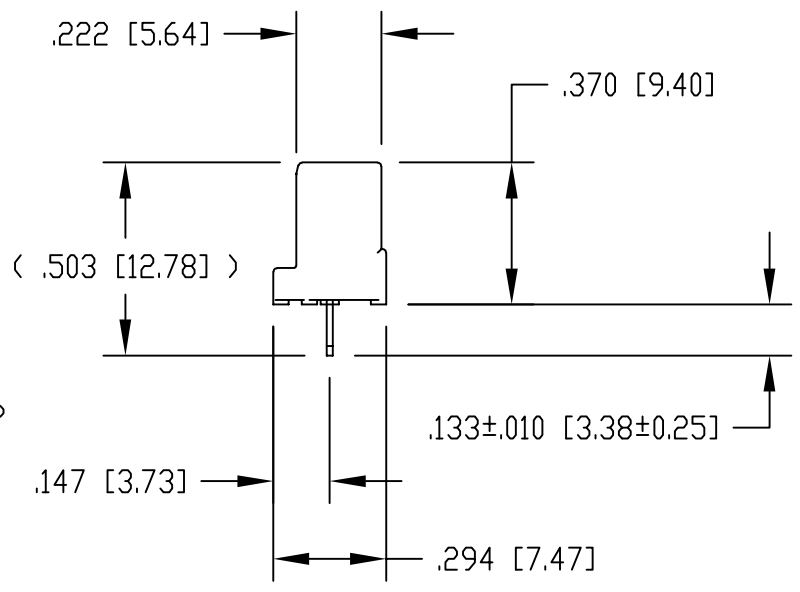
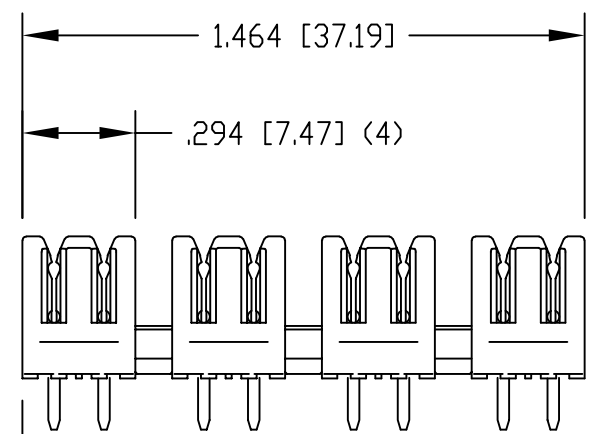


DATE	REV	ECN	APP'D. BY
3-28-16	A3	10635	TRM
1-20-17	A4	10869	TRM

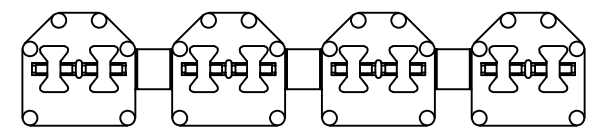


P.C.B. RECOMMENDED HOLE LAYOUT  
 SEEN FROM COMPONENT SIDE  
 ALL CENTERLINE DIMENSIONS ARE BASIC.



- NOTES:
- CONNECTOR MATERIALS:  
 HOUSING: THERMOPLASTIC UL94 V-0  
 CONTACTS: COPPER ALLOY  
 CONTACT PLATING: TIN
  - DESIGNED FOR CATEGORY 6A APPLICATIONS.
  - IDC CONTACTS TERMINATE 22 AWG TO 26 AWG SOLID CONDUCTOR WIRE.
  - FOR PRODUCT SPECIFICATION SEE PR031-01

SS-51000-003  
 PART NUMBER



THIRD ANGLE PROJECTION	 1118 Susquehanna Trail South Glen Rock, PA 17327-9199 (717) 235-7512 <a href="http://www.stewartconnector.com">http://www.stewartconnector.com</a>
DO NOT SCALE DRAWING DRAWING IS SUBJECT TO CHANGE WITHOUT NOTICE	
DIMENSIONS: INCHES [METRIC]	TITLE: CATEGORY 6A, 4 PAIR PUNCHDOWN BLOCK
UNLESS OTHERWISE SPECIFIED TOLERANCES ARE $\pm .005$ [0.13] ANGLES ARE $\pm 1^\circ$	DRN BY: DHG DATE 11-02-06
SHEET NO. 1 OF 1	APPD BY: TRM DATE 11-02-06
	DWG NO. CT510003 REV. A4

# Mouser Electronics

Authorized Distributor

Click to View Pricing, Inventory, Delivery & Lifecycle Information:

Bel:

[SS-51000-003](#)