

AMAX-5052

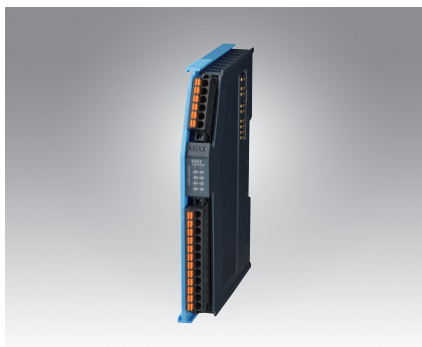
AMAX-5057

AMAX-5057SO

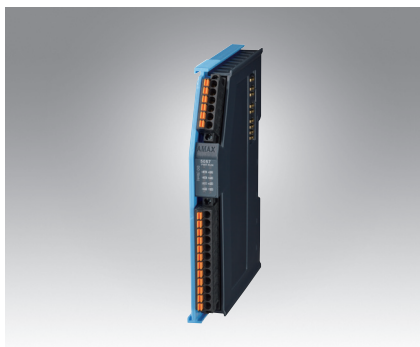
16-ch Digital Input Module

16-ch Sink-type Digital Output Module

16-ch Source-type Digital Output Module



AMAX-5052



AMAX-5057



AMAX-5057SO



Specifications

General

- **Certification** CE, FCC class A
- **Connector** Pluggable 6P+12P push-in terminal (#28~16 AWG)
- **Enclosure** PC
- **Power Consumption** 2W@24V_{DC}
- **Protocol** EtherCAT
- **Transmission Rate** 100Mbps
- **LED Indicator** PWR, RUN, DI status

Digital Input

- **Channels** 16
- **Digital Input** Dry Contact
Logic level 1: close to Iso.GND
Logic level 0: open
Wet Contact
Rated voltage: 24V_{DC}
Logic level 1: 10~30 V_{DC}
and -10~-30 V_{DC}
Logic level 0: -3~-3 V_{DC}
- **Input Delay** From logic level 0 to 1: 4ms
From logic level 1 to 0: 4ms
- **Digital Filter** 3ms
- **Input Impedance** 6.8 k Ω (wet contact)

Protection

- **Isolation Voltage** 2,000 V_{DC}

Environment

- **Operation Temperature** -25~60°C (vertical mounted)
- **Storage Temperature** -40~85°C
- **Relative Humidity** 95% (non-condense)

Ordering Information

- **AMAX-5052** 16-ch Digital Input Module

Specifications

General

- **Certification** CE, FCC class A
- **Connector** Pluggable 6P+12P push-in terminal (#28~16 AWG)
- **Enclosure** PC
- **Power Consumption** 2.5W@24V_{DC}
- **Protocol** EtherCAT
- **Transmission Rate** 100Mbps
- **Distributed Clock** Default inactive
- **LED Indicator** PWR, RUN, DO status

Digital Output

- **Channels** 16 (Sink Type)
- **Voltage Rating** 10~30V_{DC}
- **Rated Current Output** 0.3A per channel at signal "1"
- **Leakage Current** 25 μ A per channel at signal "0"
- **Output Delay** From logic level 0 to 1: 10 μ s
From logic level 1 to 0: 100 μ s

Protection

- **Isolation Voltage** 2,000 V_{DC}
- **Internal Flyback diode for inductive load**

Environment

- **Operation Temperature** -25~60°C (vertical mounted)
- **Storage Temperature** -40~85°C
- **Relative Humidity** 95% (non-condense)

Ordering Information

- **AMAX-5057** 16-ch Sink-type Digital Output Module

Specifications

General

- **Certification** CE, FCC class A
- **Connector** Pluggable 6P+12P push-in terminal (#28~16 AWG)
- **Enclosure** PC
- **Power Consumption** 2.5W@24V_{DC}
- **Protocol** EtherCAT
- **Transmission Rate** 100Mbps
- **Distributed Clock** Default inactive
- **LED Indicator** PWR, RUN, DO status

Digital Output

- **Channels** 16 (Source Type)
- **Voltage Rating** 10~30V_{DC}
- **Rated Current Output** 0.5A per channel at signal "1"
- **Leakage Current** 10 μ A per channel at signal "0"
- **Output Delay** From logic level 0 to 1: 150 μ s
From logic level 1 to 0: 2ms

Protection

- **Isolation Voltage** 2,000 V_{DC}
- **Internal Flyback diode for inductive load**

Environment

- **Operation Temperature** -25~60°C (vertical mounted)
- **Storage Temperature** -40~85°C
- **Relative Humidity** 95% (non-condense)

Ordering Information

- **AMAX-5057SO** 16-ch Source-type Digital Output Module

Mouser Electronics

Authorized Distributor

Click to View Pricing, Inventory, Delivery & Lifecycle Information:

[Advantech:](#)

[AMAX-5057SO-A2](#) [AMAX-5052-B](#) [AMAX-5057-B](#)