

**LE SERIES****POWER ENTRY MODULE FILTERS****INTRODUCTIONS**

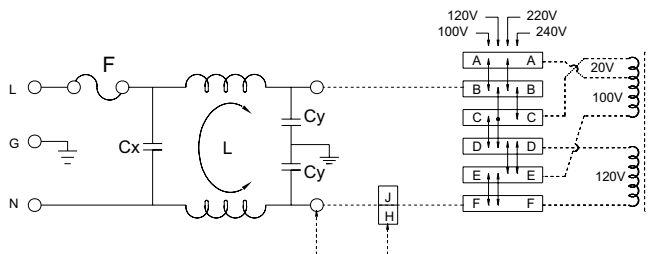
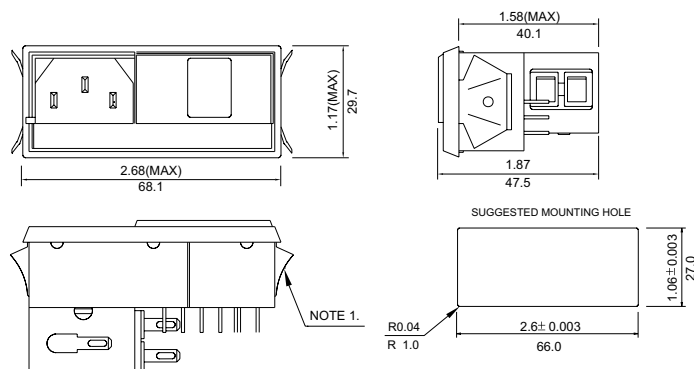
1. Power module incorporates an IEC connector, a single-fuse (3AG 6.3x32mm fuse) holder, and voltage selector switch, plus an EMI filter all-in-one easy-to-install unit.
2. Adapts to 100-120V or 200-240V input voltage by simply reversing the voltage selector.

COMPONENTS

PART NO.	Cx (uF)	L (mH)	Cy (pF)
06LE4	0.015	0.46	2200

MINIMUM INSERTION LOSS IN dB

COMMON MODE (L-G) IN 50 OHM SYSTEM							
TYPE	CURRENT RATING	FREQUENCY-MHz					
		.15	.50	1.0	5.0	10	30
06LE4	6A	9	20	25	40	45	45

ELECTRICAL SCHEMATIC**MECHANICAL CONSTRUCTION****Note**

1. Standard units mount panel thickness 0.04-0.063 inch. Special units mount panel thickness 0.06-0.09 inch or 0.1-0.126 inch
2. Jumper required if only spst power switch is used

UNIT: **INCH**
mm

Mouser Electronics

Authorized Distributor

Click to View Pricing, Inventory, Delivery & Lifecycle Information:

[Delta Electronics:](#)

[06LE4](#)