

POWER ENTRY MODULES

SNAP-IN MOUNTING

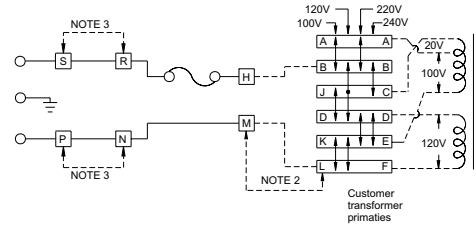
INTRODUCTIONS

1. Designed to meet globally accepted IEC publication 320 Class 1, that allows users to comply with industry standard in power entry requirement.
2. Connector for cold condition, with pin temperature 65°C max.
3. Nickel-plated brass pins and soldering terminals.
4. Snap-in mount (standard unit mount panel thickness: 0.04 to 0.063 inch; special units mount panel thickness: 0.06 to 0.09 inch).
5. Power module incorporates an IEC connector, fuse holder, and voltage selector, all in one easy-to-install unit.
6. Fuse holder designed for single fuse (6.3x32mm fuse). Fuse-pull enables easy change of fuse. And fuse cover window prevents fuse removal with line plug inserted.
7. Adapts to 110V, 120V, 220V or 240V input voltage by orienting voltage selector card to position desired voltage on top left side.
8. Compact design and high volume production provide maximum flexibility and significant savings in space and cost over assembly of individual components.
9. 06L4 is UL recognized and CSA certified.
10. 06L4 with built-in filter is also available. See Delta EMI Filter catalog for LE series.

SPECIFICATIONS

1. Rated voltage: 115VAC/250VAC
2. Minimum insulation resistance at 500VDC: 10M OHM
3. Maximum leakage current each line-to-ground
2 uA AT 115VAC/60Hz
5 uA AT 250VAC/50Hz
4. Dielectric strength (one minute)
line-to-ground: 2250VDC
line-to-line: 1450VDC
5. Flammability class: UL 94V-0

ELECTRICAL SCHEMATIC

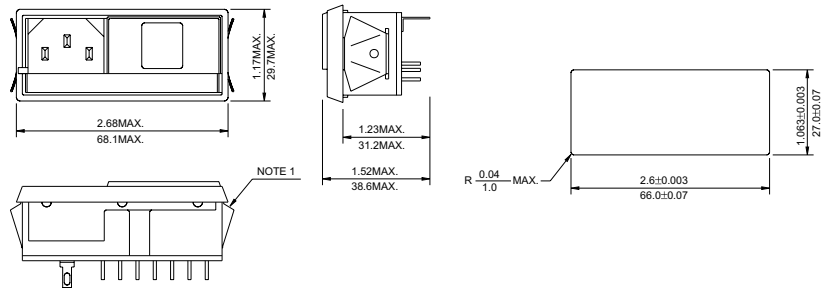


- NOTES:
1. 06L4-STD mount panel thickness 0.04-0.063 inch.
06L4 (01) mount panel thickness 0.06-0.09 inch.
06L4 (02) mount panel thickness 0.1-0.126 inch.
 2. Jumper required if only spst power switch is used.
 3. Jumper required if no input filtering is used.

TYPE & RATED CURRENT

DELTA PART NUMBER		06L4
RATED CURRENT (AT 250VAC)	UL/CSA	15A/6A
	CONNECTOR TYPE	
	MALE	△
	FEMALE	
FUSE HOLDER		S
VOLTAGE SELECTOR		△

MECHANICAL CONSTRUCTION



06L4

UNIT: INCH
mm

Mouser Electronics

Authorized Distributor

Click to View Pricing, Inventory, Delivery & Lifecycle Information:

[Delta Electronics:](#)

[06L4](#)