



SPECIFICATION FOR APPROVAL

TO: _____

PART NO.		REV.		DELTA SAMPLE ISSUE NO	
PART NAME	EMI FILTER		DELTA MODEL	10DBAG5U	
ORDER P/N.	10DBAG5U		SAMPLE ISSUE DATE		

1. ELECTRICAL CHARACTERISTICS:

- 1-1. VOLTAGE RATING 100-250VAC
- 1-2. CURRENT RATING
 - A. AT 100-250VAC. 50°C 10 A RMS Max.
 - B. AT 100-250VAC. 40°C 11 A RMS Max.
- 1-3. OPERATING FREQUENCY..... 50/60 Hz
- 1-4. LEAKAGE CURRENT: EACH LINE TO GROUND
 - A. @115VAC 60Hz 0.25 mA Max.
 - B. @250VAC 50Hz 0.45 mA Max.
- 1-5. HIPOT RATING (FOR 2 SECONDS)
 - A. LINE TO GROUND 2250VDC
 - B. LINE TO LINE 1075VDC
- 1-6. TEMPERATURE RANGE: -25 TO +100 DEGREE C
- 1-7. MINIMUM INSERTION LOSS IN dB: (AT 50 OHM SYSTEM)

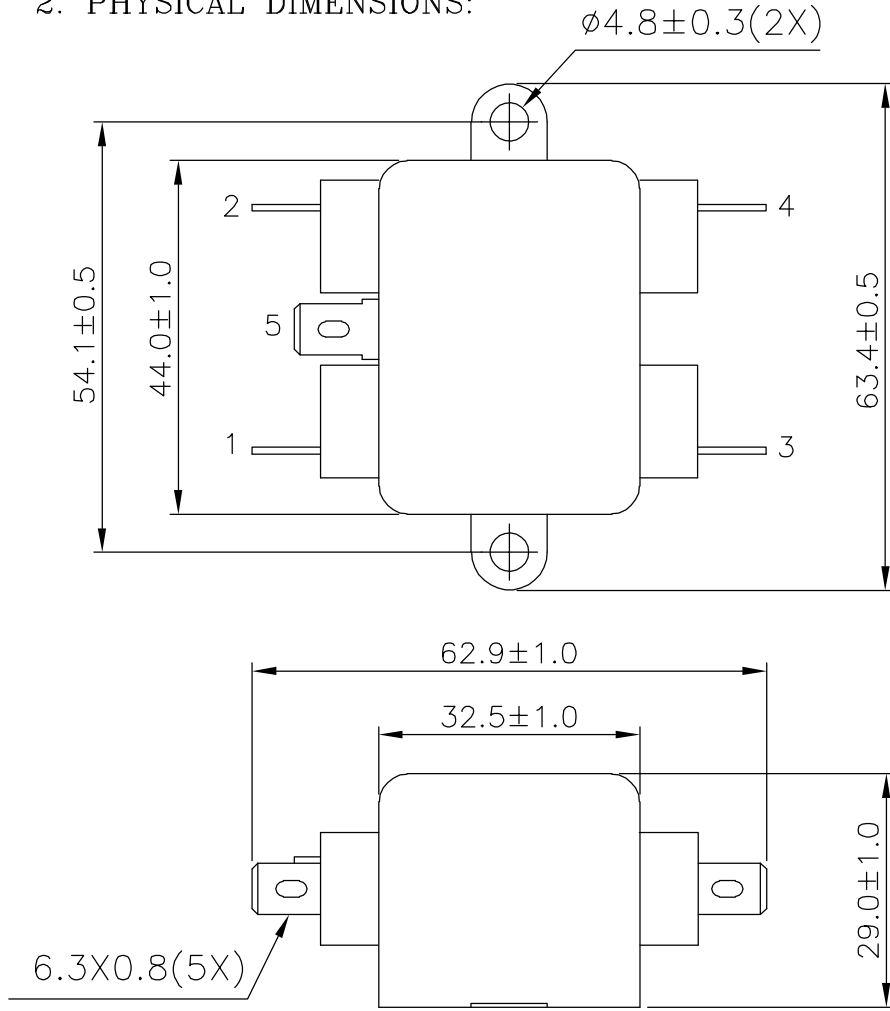
FREQ. MHz	.01	.05	.10	.15	.50	1.0	5.0	10	30
COM. MODE dB	2	6	10	15	20	25	30	30	30
DIF. MODE dB	/	/	/	3	10	10	25	30	35

1-8. SAFETY : UL, cUL, ENEC15

REPORT BY	CHECKED BY	APPROVED BY	3	
			2	
			REV.1	

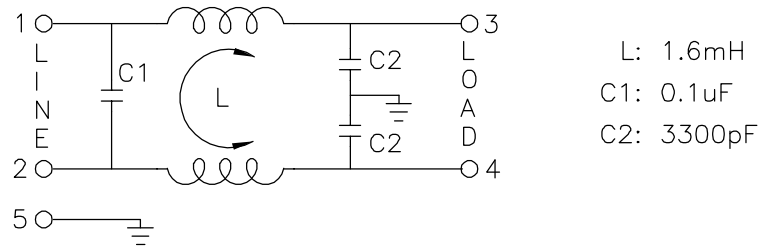
PART NO.		REV.		DELTA SAMPLE ISSUE NO	
PART NAME	EMI FILTER		DELTA MODEL	10DBAG5U	
ORDER P/N.	10DBAG5U		SAMPLE ISSUE DATE		

2. PHYSICAL DIMENSIONS:



UNIT: mm

3. SCHEMATIC:



REPORT BY	CHECKED BY	APPROVED BY	UNLESS OTHERWISE SPECIFIED DIMENSION TOLERANCE DECIMALS .X± .XX± ANGLES±		
			REV.	99.08.30	

Mouser Electronics

Authorized Distributor

Click to View Pricing, Inventory, Delivery & Lifecycle Information:

[Delta Electronics:](#)

[10DBAG5U](#)