

# EAO – Your Expert Partner for Human Machine Interfaces

## 82-5152.0144 - Indicator 19 mm stainless-steel

### 82-5152.0144 - Indicator 19 mm stainless-steel



*Attention: The preview is based on a sample product. This can differ from your current configuration.*

#### Mounting

Mounting cut-out	Ø 19 mm
Design	flush

#### Front

Front dimension	Ø 22 mm
Front shape	round
Front ring shape	flush
Front bezel material	Stainless steel

#### Other Attributes

Operating voltage	24 V AC/DC
Weight	0,018 kg
Operation current	7 mA

#### Operating-/Indication part

Lens optics	opaque
Lens material	Stainless steel
Lens profile	flat
Lens illumination	illuminative
Lens colour	Stainless steel

#### IP-Rating

Front protection	IP65, IP67
------------------	------------

#### Connection Method

Terminal	Screw terminal
----------	----------------

#### Illumination

Illumination	Ring with yellow LED
--------------	----------------------

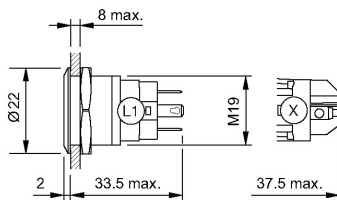
#### Function

Indicator	
-----------	--

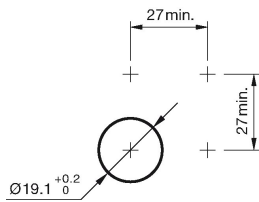
# EAO – Your Expert Partner for Human Machine Interfaces

82-5152.0144 - Indicator 19 mm stainless-steel

## Dimensions

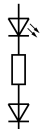


## Mounting cut-outs



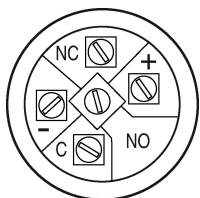
## Wiring diagram

x2+



x1-

## Component layout



# Mouser Electronics

Authorized Distributor

Click to View Pricing, Inventory, Delivery & Lifecycle Information:

EAO:

[82-5152.0144](#)