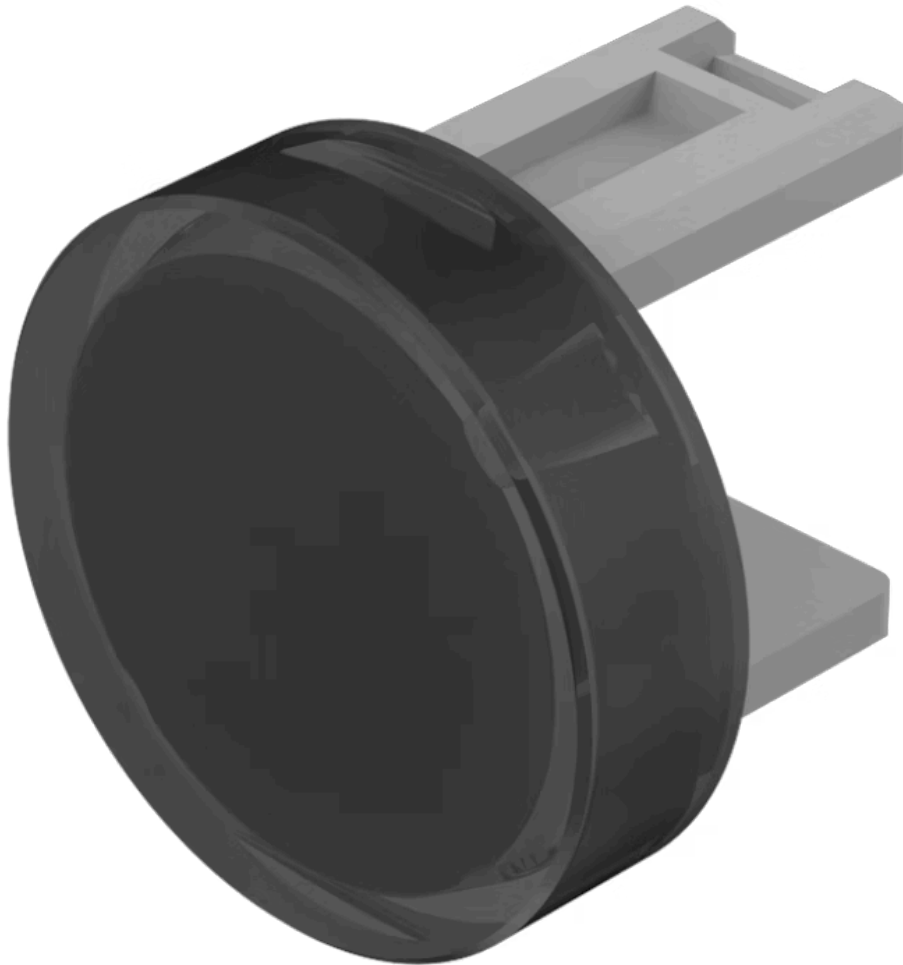


Lens

31-
933.1

Distribution by
Mouser



<https://mouser.eao.com/p/31-933.1>

Your product:



31-933.1 Lens

FRONT

Front form: round

OPERATING-/INDICATION PART

Lens colour: Smokey black

Lens material: Plastic

Lens illumination: illuminative

Lens shape: flush

Lens optics: transparent

MECHANICAL CHARACTERISTIC

Weight: 0.001 kg

CERTIFICATE

REACH: REACH compliant

RoHS: RoHS compliant

OTHER

Short Description: Lens, Ø 15.8 mm, illuminative, Smokey black, flush, Plastic

Dimension: Ø 15.8 mm

Mouser Electronics

Authorized Distributor

Click to View Pricing, Inventory, Delivery & Lifecycle Information:

[EAO:](#)

[31-933.1](#)