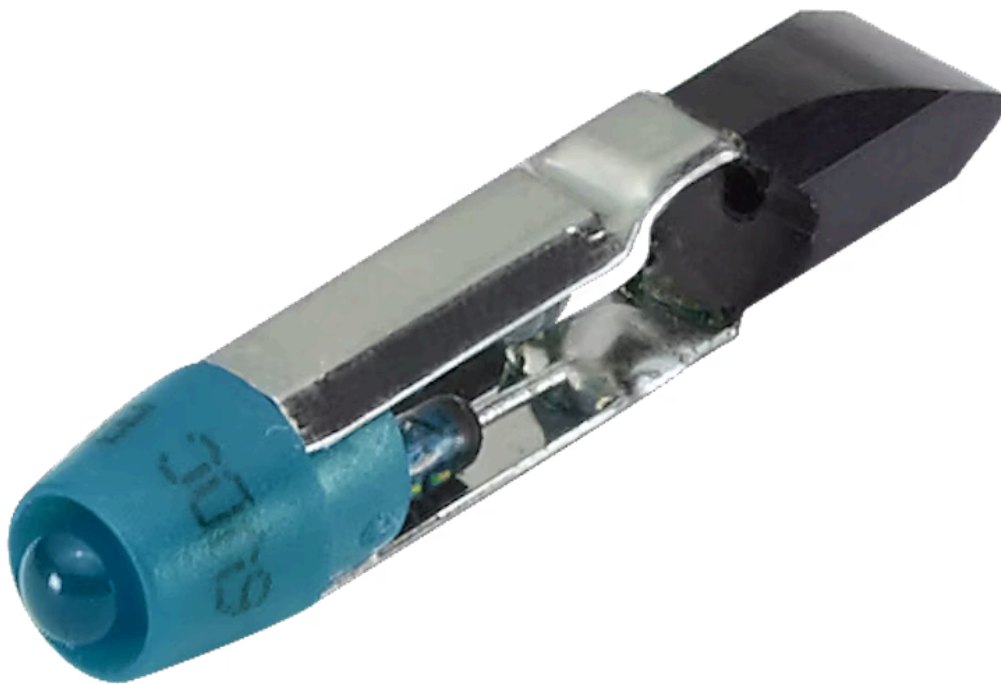


Single-LED

10-2112.1066



<https://eao.com/p/10-2112.1066>

Your product:



10-2112.1066 Single-LED

OPERATING-/INDICATION PART

Illumination colour: Blue

ELECTRICAL CHARACTERISTICS

Operating voltage: 24 V AC/DC +10%

Operation current: 7 - 14 mA \pm 15 %

Lumi. Intensity: 650 mcd

MECHANICAL CHARATERISTIC

Weight: 0.001 kg

CERTIFICATE

REACH: REACH compliant

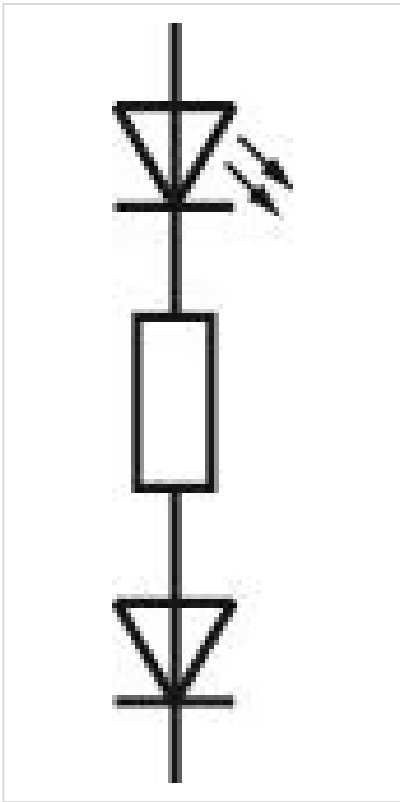
RoHS: RoHS compliant

OTHER

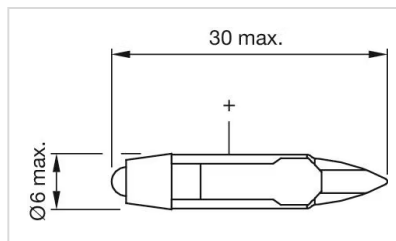
Short Description: Single-LED, T5.6, Blue, 24 V AC/DC +10%

Hints: For LED element fitting information see Application guidelines, LED polarity, Due to high surface temperatures, the series resistor must not be soldered directly to the terminals of the equipment (use a terminal plate), When using AC/DC types with AC operation, slight flickering can occur, The luminous intensity stated is for when used with DC, Electrical and optical data are measured at 25 °C, The specified versions are built with a protection diode (halve wave rectifier) in series and the LED, Luminosity and wave length variations caused by LED manufacturing processes may cause slight differences regarding the illumination. The customer has to decide what resistor shall be used to the LED, Where supply voltages are over 48 V, a voltage-reduction element (external protective series resistor) must be used.

Wiring diagrams:



Dimension drawings:



Mouser Electronics

Authorized Distributor

Click to View Pricing, Inventory, Delivery & Lifecycle Information:

[EAO:](#)

[10-2112.1066](#)