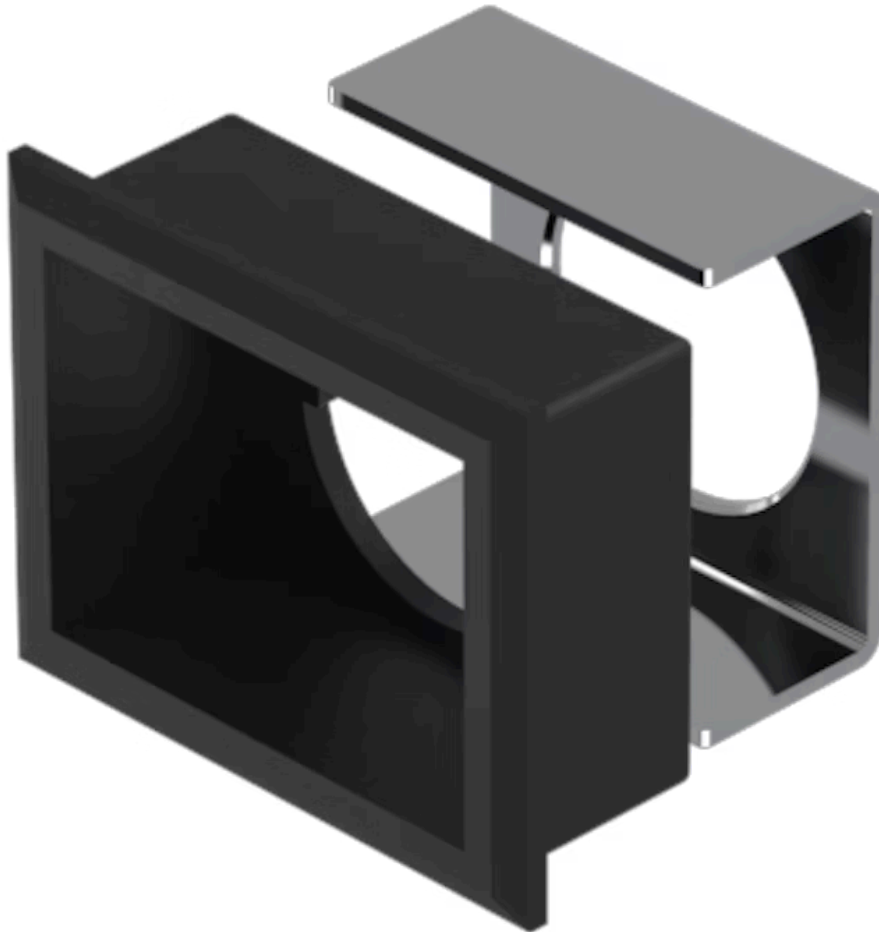


Front bezel set

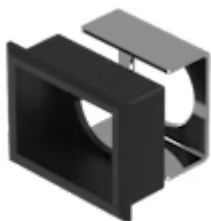
61-9931.0

Distribution by
Mouser



<https://mouser.eao.com/p/61-9931.0>

Your product:



61-9931.0 Front bezel set

FRONT

Front dimension:	30 mm x 24 mm
Front form:	rectangular
Front bezel colour:	Black
Front bezel material:	Plastic, according to UL 94 V0

MOUNTING

Mounting cut-out:	27 mm x 21 mm
Mounting type:	Panel mounting

MECHANICAL CHARACTERISTIC

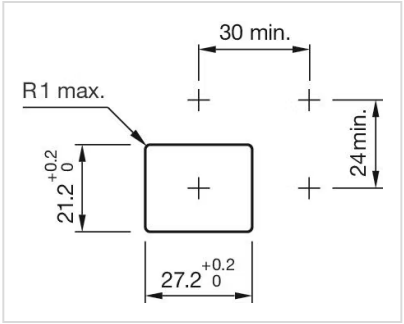
Weight:	0.008 kg
----------------	----------

CERTIFICATE

REACH:	REACH compliant
RoHS:	RoHS compliant

OTHER

Short Description:	Front bezel set, 30 mm x 24 mm, 24 mm x 18 mm, Black, Plastic, according to UL 94 V0
Dimension:	30 mm x 24 mm
Internal size:	24 mm x 18 mm
Product attributes:	For indicator illuminated pushbutton and keylock switch
Mounting cut-outs:	



Mouser Electronics

Authorized Distributor

Click to View Pricing, Inventory, Delivery & Lifecycle Information:

[EAO:](#)

[61-9931.0](#)