

# Actuator

61-1100.0

Distribution by  
Mouser



<https://mouser.eao.com/p/61-1100.0>

Your product:

---



## 61-1100.0 Actuator

### MOUNTING

**Mounting type:** Panel mounting

### OPERATING-/INDICATION PART

**Lens illumination:** illuminative

### MECHANICAL CHARACTERISTIC

**Switching action:** Momentary

**Mechanical lifetime:** According to DIN/IEC 60512-5-6 and EN/IEC 60947-5-1, 2 Mio. cycles of operation

**Operating force:** 3 N ... 5 N snap-action switching element, 3.5 ... 11 N slow-make switching element

**Operating Travel:** 3 mm

**Tightening torque:** Max. 0.5 Nm

**Weight:** 0.005 kg

### AMBIENT CONDITION

**IP Protection:** IP40 rear side, according to EN IEC 60529, IP67 front side, according to EN IEC 60529

**Operating temperature:** – 25 °C ... + 55 °C

**Storage temperature:** – 40 °C ... + 85 °C

### CERTIFICATE

**REACH:** REACH compliant

**RoHS:** RoHS compliant

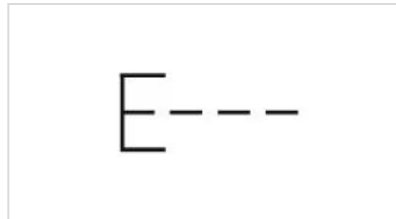
## OTHER

**Short Description:** Actuator, illuminative, Momentary

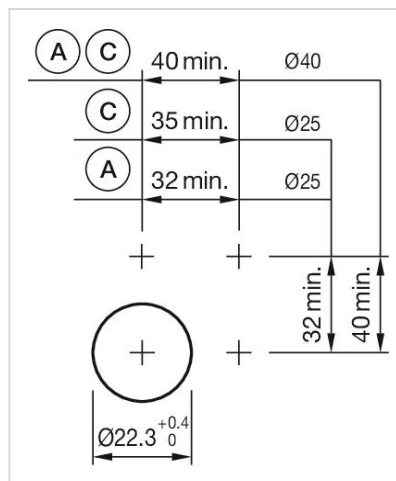
**Housing colour:** Black

**Housing material:** Plastic, according to UL 94 V0, self-extinguishing

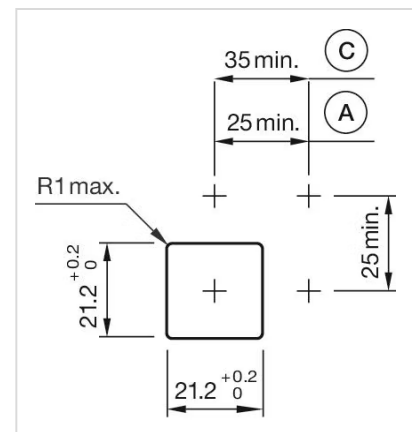
**Wiring diagrams:**



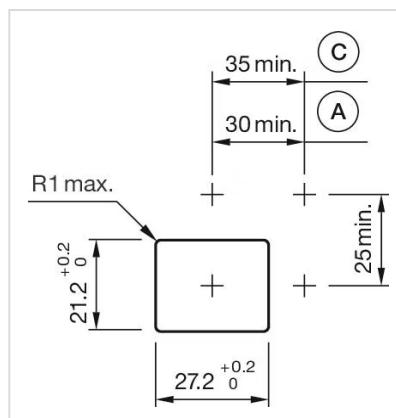
**Mounting cut-outs:**



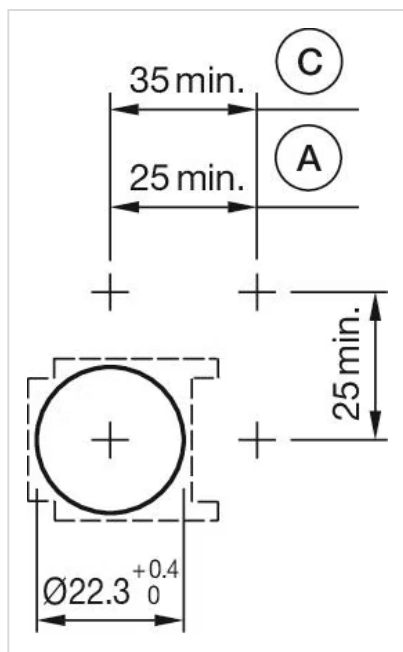
A = Solder/Plug-in terminal 2.8 mm x 0.5 mm  
B = Solder terminal  
C = Screw terminal



A = Solder/Plug-in terminal 2.8 mm x 0.5 mm  
C = Screw terminal

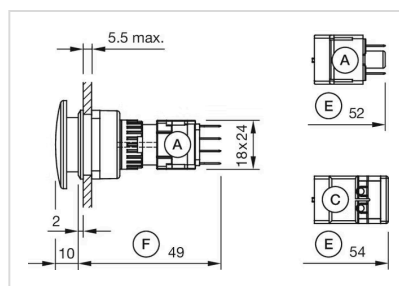


A = Solder/Plug-in terminal 2.8 mm x 0.5 mm  
C = Screw terminal

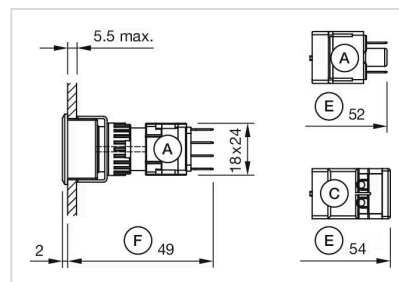


A = Solder/Plug-in terminal 2.8 mm x 0.5 mm  
C = Screw terminal

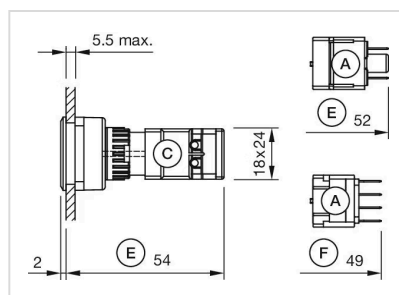
#### Dimension drawings:



A = Plug-in terminal 2.8 mm x 0.5 mm  
C = Screw terminal  
E = Slow-make switching element  
F = Snap-action switching element



A = Plug-in terminal 2.8 mm x 0.5 mm  
C = Screw terminal  
E = Slow-make switching element  
F = Snap-action switching element



A = Plug-in terminal 2.8 mm x 0.5 mm  
C = Screw terminal  
E = Slow-make switching element  
F = Snap-action switching element

# Mouser Electronics

Authorized Distributor

Click to View Pricing, Inventory, Delivery & Lifecycle Information:

[EAO:](#)

[61-1100.0](#)