

# E-stop protective shroud

84-906

Distribution by  
Mouser



<https://mouser.eao.com/p/84-906>

Your product:

---



## 84-906 E-stop protective shroud

### FRONT

**Colour:** Yellow

### MECHANICAL CHARACTERISTIC

**Weight:** 0.018 kg

### AMBIENT CONDITION

**IP front protection:** IP65

### OTHER

**Short Description:** E-stop protective shroud, Ø 50 mm, Plastic, Yellow

**Titel Accessory:** E-stop protective shroud

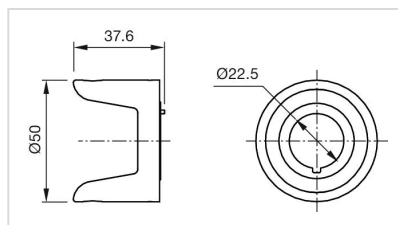
**Dimension:** Ø 50 mm

**Material:** Plastic

**Hints:** Front panel thickness 1 ... 3 mm, With anti-twist device, When using a protective shroud the e-stop or stop-switch has to be turned by 180° to be mounted. See dimensional drawing, The protection shroud Part No. 84-909 is not suitable for a proper use of emergency-stop. It can obstruct a spontaneous operation of the emergency-stop switch, This shroud Part No. 84-906 is not compliant to EN ISO 13850. There are no restrictions when combined with stop switches.

**Colour RAL:** 1003 RAL

**Dimension drawings:**



for Part No. 84-906

# Mouser Electronics

Authorized Distributor

Click to View Pricing, Inventory, Delivery & Lifecycle Information:

[EAO:](#)

[84-906](#)