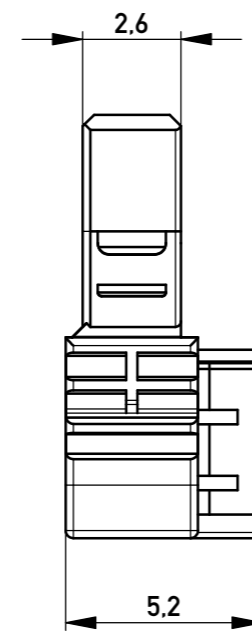
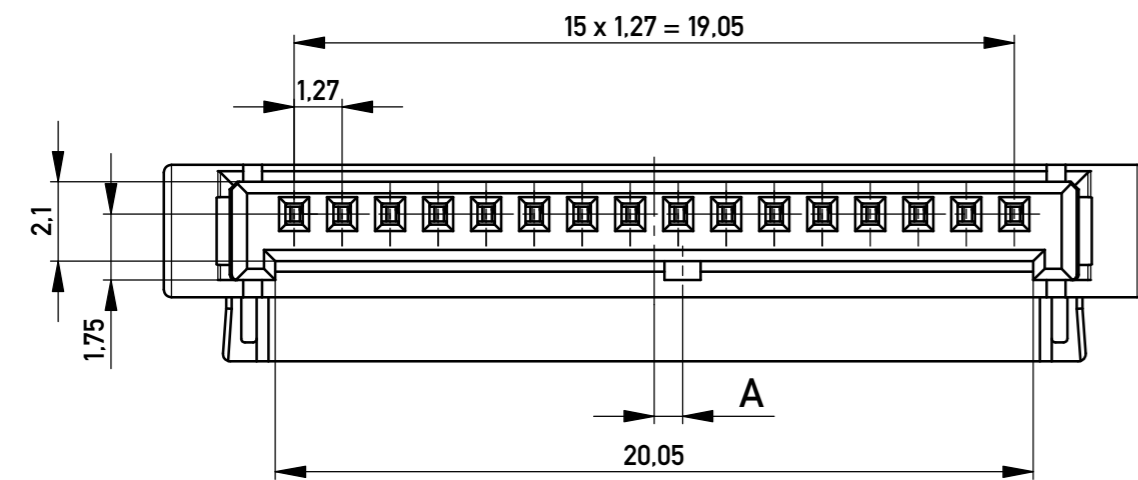
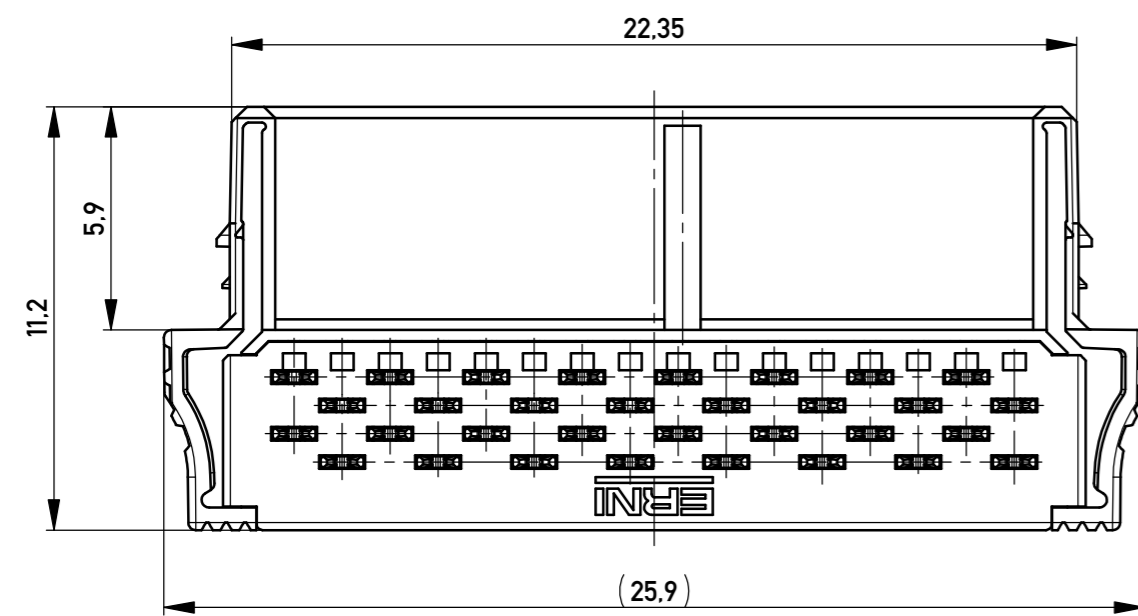
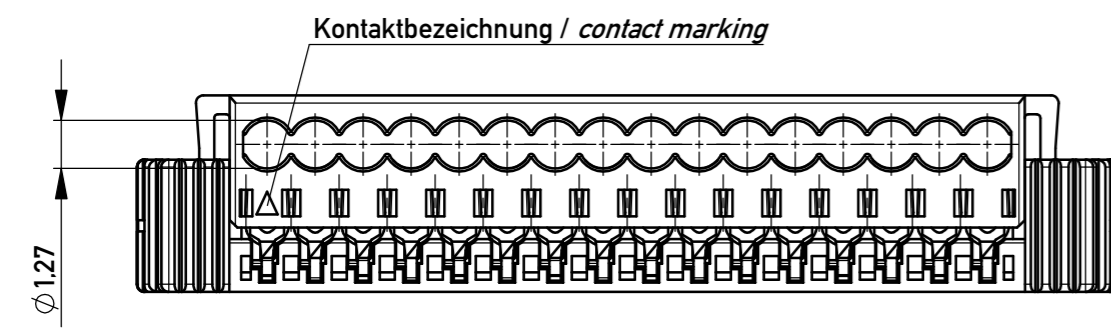
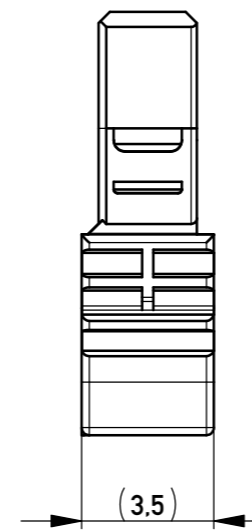


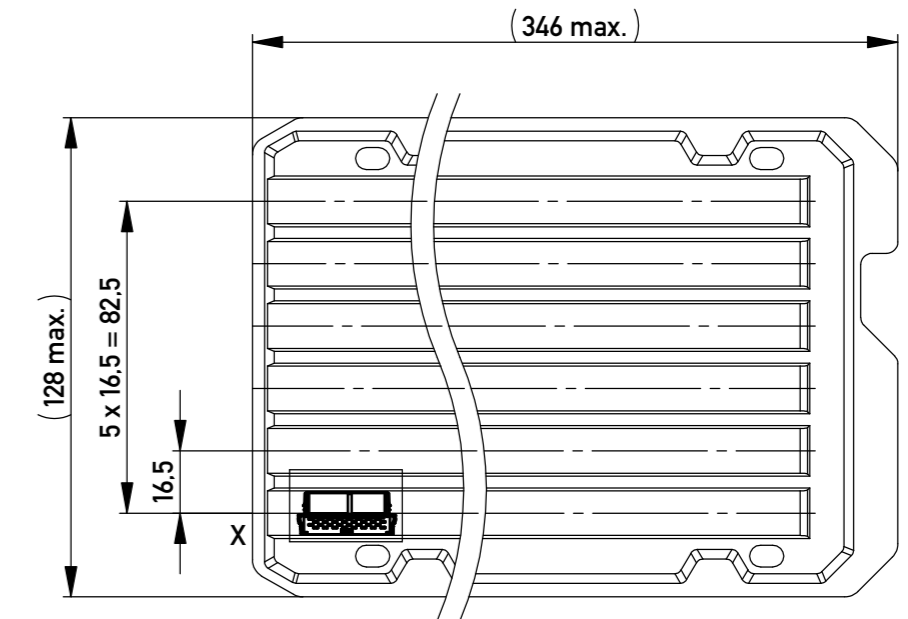
Leitungsführung offen (Anlieferungszustand)
with opening cable guide mounted (state at time of supply)



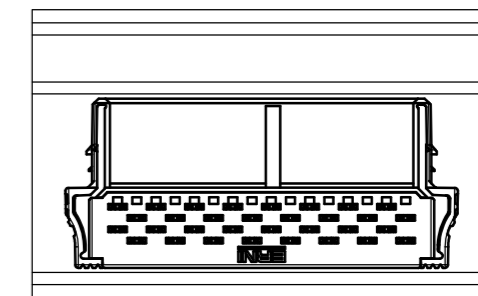
Leitungsführung geschlossen
cable guide pressed on



Verpackt in Tray - tray packaging
Verpackungseinheit 72 Stück - packaging unit 72 pcs



Einzelheit X / detail X
M 2:1 / scale 2:1



505321		rot red	2,25	
505320		grün green	2,25	
505319		blau blue	0,75	
505318		schwarz black	0,75	
Ident-Nr. part-no.	Codierung coding	Farbe colour	A	Bemerkung remark

Information:		Tolerances ISO 2768-1H ISO 8015		Scale 5:1
All rights reserved. Only for Information. To ensure that this is the latest version of this drawing, please contact one of the ERNI companies before using.		Subject to modification without prior notice. Drawing will not be updated.		Designation F 1,27 MCB-A IDC 16-p 2-latch single cable 0,35 mm ²
www.ERNI.com		505317		1 A2
Index	Date	Class	MCBA	

Mouser Electronics

Authorized Distributor

Click to View Pricing, Inventory, Delivery & Lifecycle Information:

[ERNI Electronics:](#)

[505318](#)