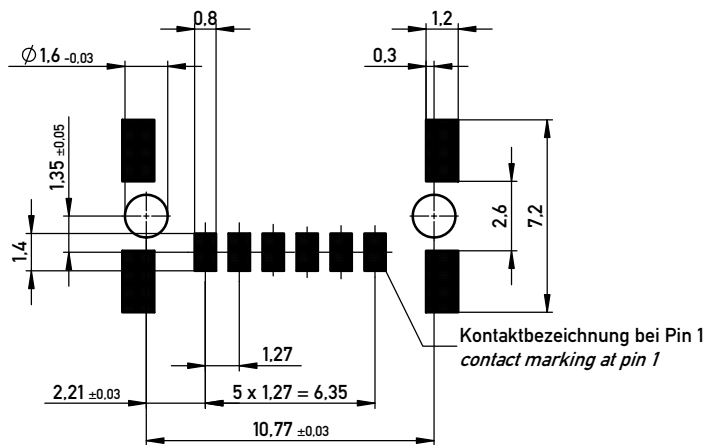
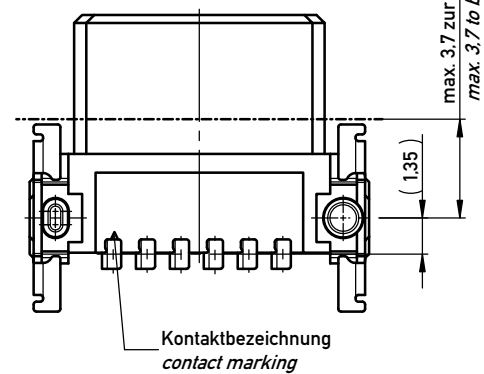
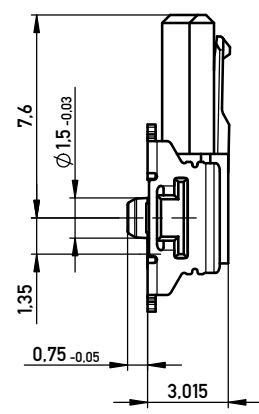
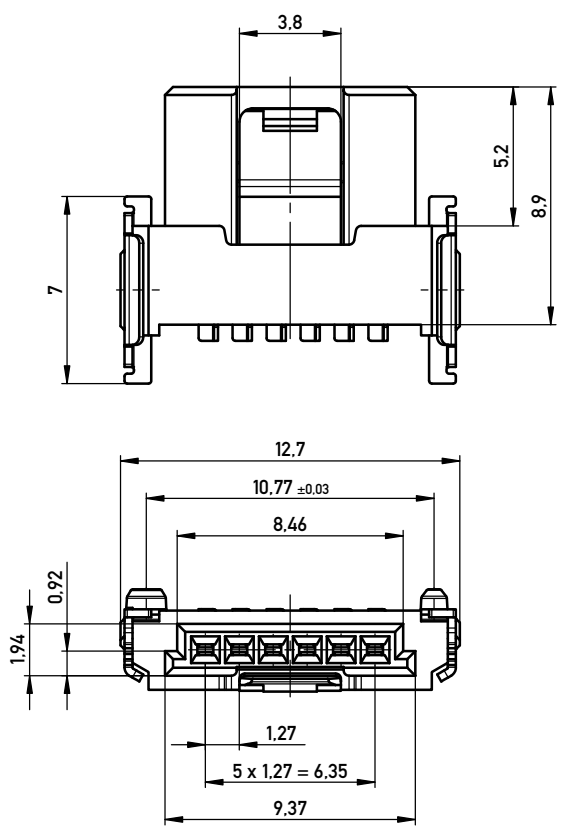
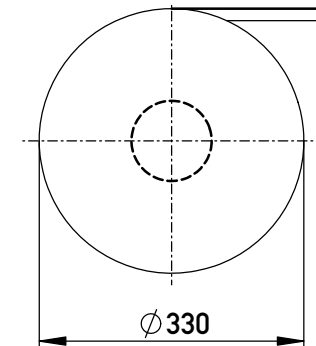


Leiterplatten-Layout Vorschlag für SMT  
PCB-Layout Proposal for SMT

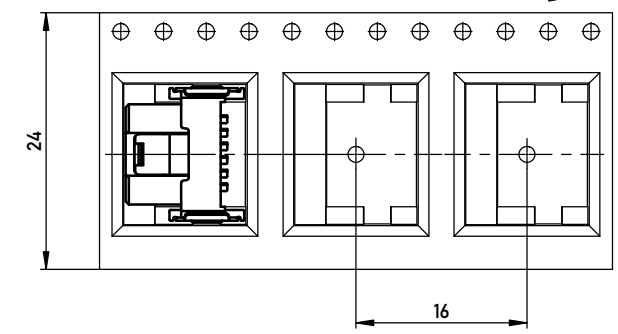


Verpackt im Gurt in Anlehnung an DIN IEC 60286-3  
Tape on Reel Packaging according to DIN IEC 60286-3  
Verpackungseinheit: 850 Stück  
Packaging unit: 850 pcs



max. 3.7 zur Leiterplattenkante  
max. 3.7 to board edge

Abspulrichtung - Reel off Direction



Anforderungsstufe 1  
Performance Level 1

Kontaktbereich vergoldet  
Mating Area gold plating

Anschlussbereich verzinkt 4-6 µm  
Terminal Area 4-6 µm tin plating

Koplanarität der Anschlüsse ≤ 0.1 mm  
Coplanarity Area of Termination ≤ 0.1 mm

Information: ohne Hilfsmittel lösbar - without tool unlockable Bauteilfarbe: weiß - component color: white vergrößerte Löt pads - enlarged solder pads	Tolerances All Dimensions in mm	Scale	5:1	mit Verriegelung with locking mechanism	
		Designation <b>F 1.27 SRC P. 6-polig BA1</b>			
All rights reserved. Only for Information. To ensure that this is the latest version of this drawing, please contact one of the ERNI companies before using.		Subject to modification without prior notice. Drawing will not be updated.		ERNI www.ERNI.com	
a	15.07.2015			444750	
Index	Date			I A3	
		Class		SRCP	

Copyright by ERNI GmbH  
Proprietary notice pursuant to ISO 9006 to be observed.

# Mouser Electronics

Authorized Distributor

Click to View Pricing, Inventory, Delivery & Lifecycle Information:

[ERNI Electronics:](#)

[444750](#)