

# LTM4637

## 20A DC/DC $\mu$ Module Step-Down Regulator

### DESCRIPTION

Demonstration circuit DC1872A features the LTM<sup>®</sup>4637EV, a high efficiency, high density switch mode step-down power  $\mu$ Module<sup>®</sup> regulator. The input voltage range is from 4.5V to 20V. The output voltage is jumper programmable from 1.0V to 1.8V with a rated load current of 20A. Derating is necessary for certain  $V_{IN}$ ,  $V_{OUT}$ , frequency and thermal conditions. The DC1872A offers the TRACK/SS pin, allowing the user to program output tracking or soft-start period. The DC1872A allows the user to

choose pulse-skipping mode or Burst Mode<sup>®</sup> operation for higher efficiency at light load conditions.

The LTM4637 data sheet must be read in conjunction with this demo manual prior to working on or modifying demo circuit DC1872A.

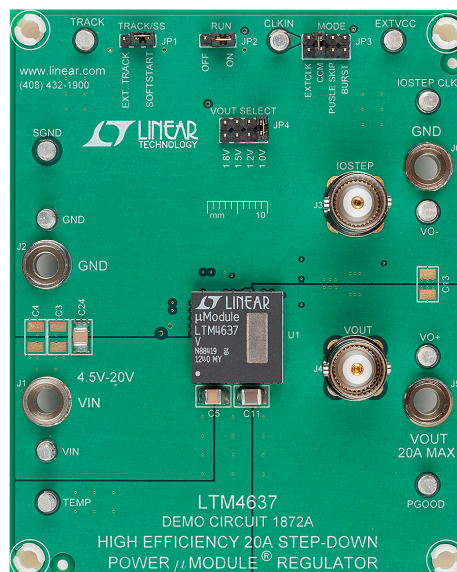
**Design files for this circuit board are available at <http://www.linear.com/demo>**

LT, LT, LTC, LTM, Linear Technology, the Linear logo,  $\mu$ Module and Burst Mode are registered trademarks of Linear Technology Corporation. All other trademarks are the property of their respective owners.

### PERFORMANCE SUMMARY

PARAMETER	CONDITIONS / NOTES	VALUE
Input Voltage Range		4.5V to 20V
Output Voltage $V_{OUT}$	Jumper Selectable	1.0V, 1.2V, 1.5V, 1.8V $\pm$ 1.5%
Maximum Continuous Output Current	Derating Is Necessary for Certain Operating Conditions. See Data Sheet for Details	20ADC
Operating Frequency	$R_{ISET} = 124k\Omega$	520kHz
Efficiency	$V_{IN} = 12V$ , $V_{OUT} = 1.0V$ , $I_{OUT} = 20A$	82.2% See Figure 2
Load Transient	$V_{IN} = 12V$ , $V_{OUT} = 1.0V$	See Figure 3

### BOARD PHOTO



dc1872af

## QUICK START PROCEDURE

Demonstration circuit DC1872A is an easy way to evaluate the performance of the LTM4637EV. Please refer to Figure 1 for proper measurement equipment setup and follow the procedure below:

- Place jumpers in the following positions for a typical 1.0V<sub>OUT</sub> application:

RUN	MODE	TRACK/SS	VOUT SELECT
ON	CCM	SS	1.0V

- With power off, connect the input power supply, load and meters as shown in Figure 1. Preset the load to 0A and V<sub>IN</sub> supply to be 0V.
- Turn on the power at the input. Increase V<sub>IN</sub> to 12V (**Do not apply more than the rated maximum voltage of 20V to the board or the part may be damaged**). The output voltage should be regulated and deliver the selected output voltage ±1.5%.

- Vary the input voltage from 4.5V to 20V and adjust the load current from 0A to 20A. Observe the output voltage regulation, ripple voltage, efficiency, and other parameters. Output voltage ripple may be measured at J4 with a BNC cable and oscilloscope. The probe channel for V<sub>OUT</sub> should be set at 50Ω termination resistance to match the BNC cable.
- (Optional) For optional load transient test, apply an adjustable pulse signal between IOSTEP\_CLK and GND test points. The pulse amplitude sets the load step current amplitude. Keep the pulse width short (<1ms) and pulse duty cycle low (<5%) to limit the thermal stress on the load transient circuit. The load step current can be monitored with a BNC connected to J3 (15mV/A).

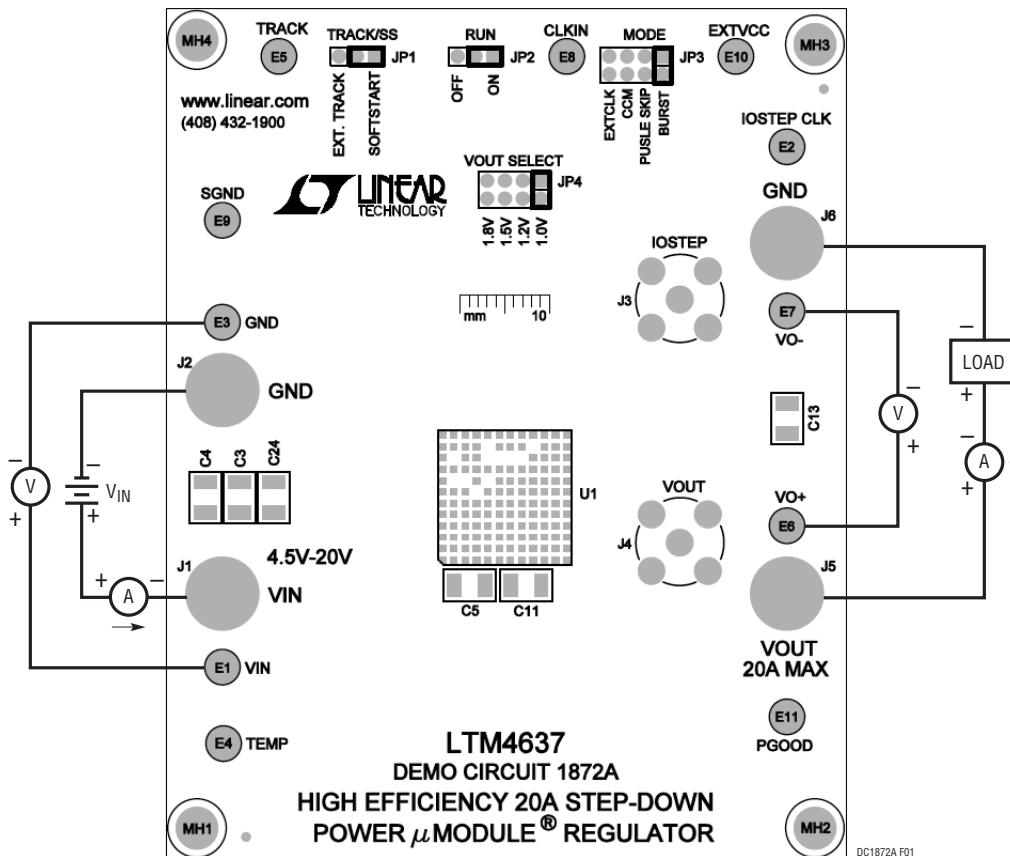
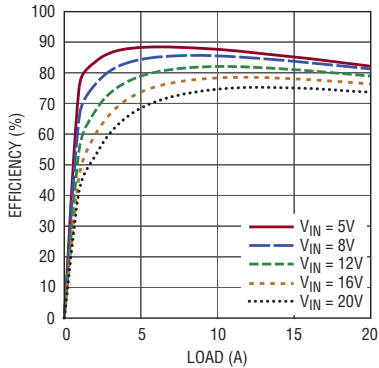


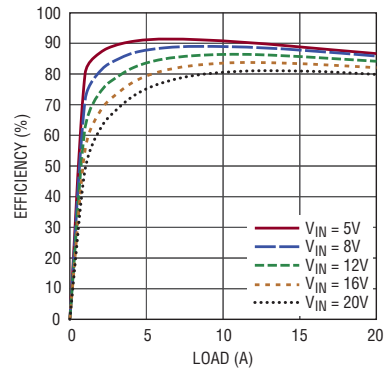
Figure 1. Proper Measurement Equipment Setup

**QUICK START PROCEDURE**



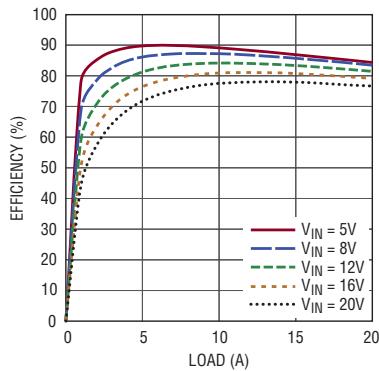
DC1872A F02a

(2a)  $V_{OUT} = 1.0V$



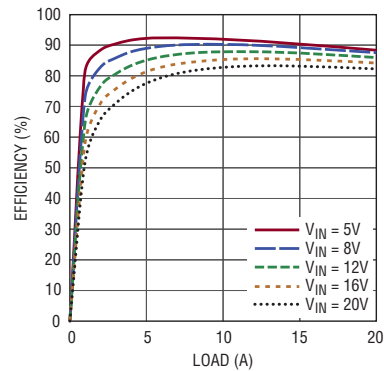
DC1872A F02c

(2c)  $V_{OUT} = 1.5V$



DC1872A F02b

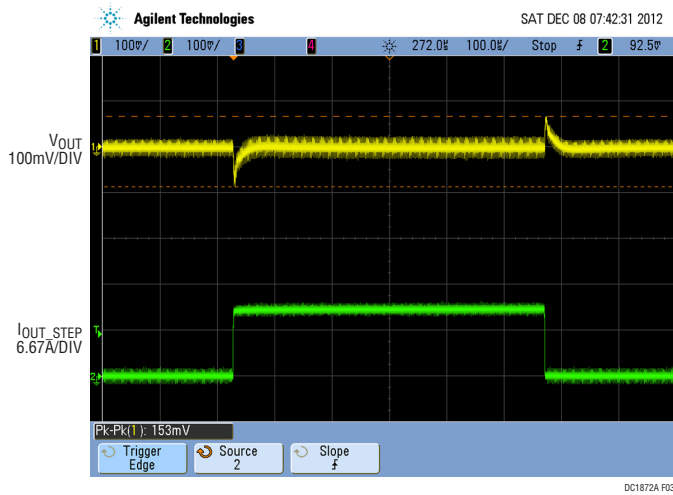
(2b)  $V_{OUT} = 1.2V$



DC1872A F02d

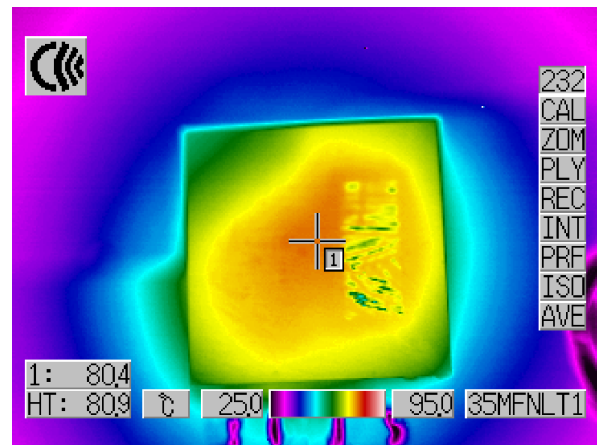
(2d)  $V_{OUT} = 1.8V$

**Figure 2. Measured DC1872A Efficiency at Different  $V_{IN}$  and  $V_{OUT}$  Values (CCM Mode Enabled)**



DC1872A F03

**Figure 3. Measured Load Transient Response ( $V_{IN} = 12V$ ,  $V_{OUT} = 1.0V$ , 0A to 10A Load Step)**



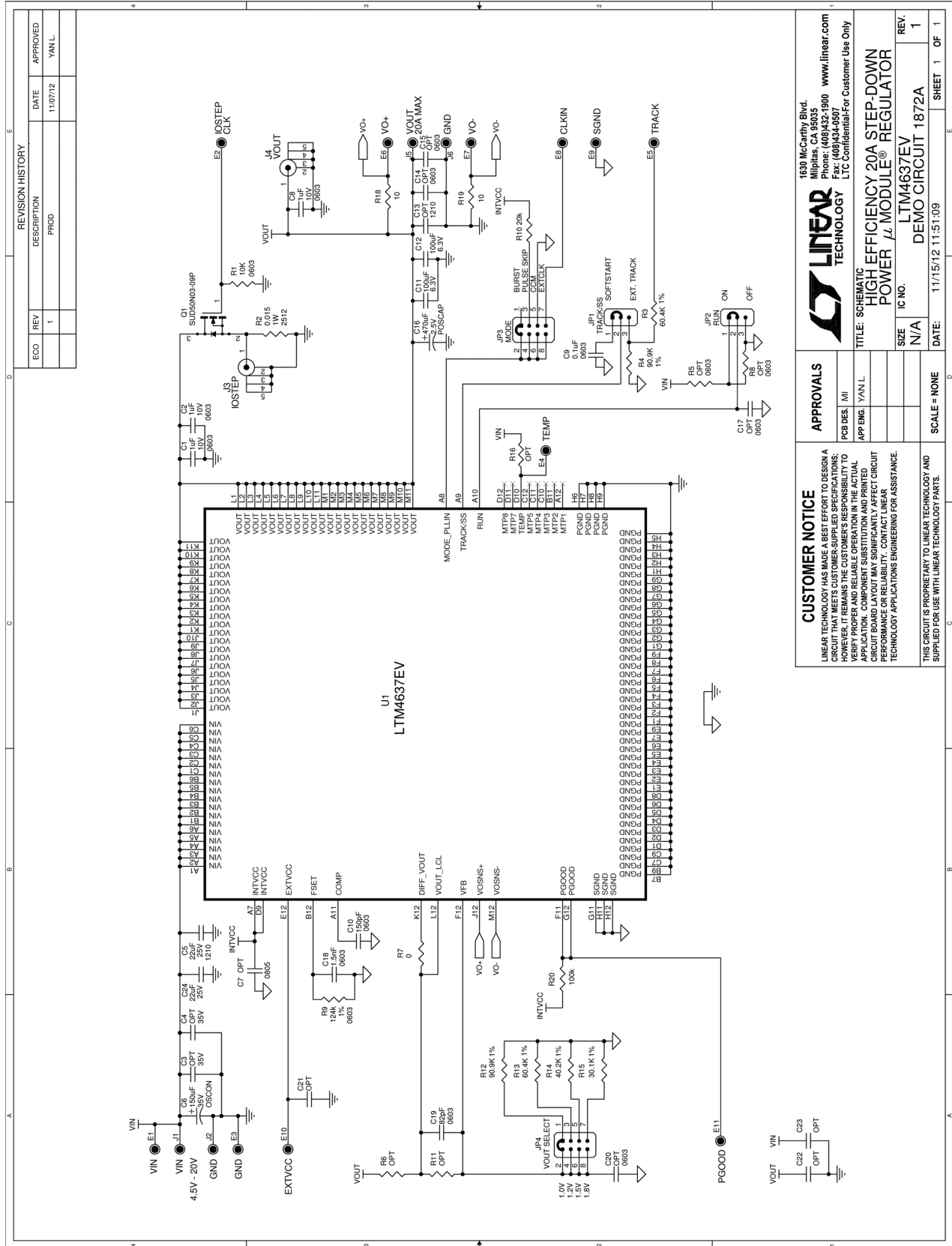
**Figure 4. Thermal Image of LTM4637 ( $V_{IN} = 12V$ ,  $V_{OUT} = 1.0V$ ,  $I_{LOAD} = 20A$ , Ambient Temperature = 21.6°, No Forced Air Flow)**

# DEMO MANUAL DC1872A

## PARTS LIST

ITEM	QTY	REFERENCE	PART DESCRIPTION	MANUFACTURER/PART NUMBER
<b>Required Circuit Components</b>				
1	1	U1	IC, MICRO MODULE	LINEAR TECH LTM4637EV
2	2	C5, C24	CAP, 1210 22 $\mu$ F 10% 25V X5R	MURATA GRM32ER61E226KE15L
3	1	C6	CAP, 150 $\mu$ F 35V ELEC	SUN ELEC 35CE150AX
4	1	C9	CAP, 0603 0.1 $\mu$ F 10% 50V X7R	TDK C1608X7R1H104K
5	1	C10	CAP, 0603 150pF 10% 25V NPO	AVX 06033A151KAT2A
6	2	C11, C12	CAP, 1210 100 $\mu$ F 20% 6.3V X5R	TDK C3225X5R0J107M
7	1	C16	CAP, 7343 470 $\mu$ F 20% 2.5V POSCAP	SANYO 2R5TPE470M9
8	1	C18	CAP, 0603 1.5nF 5% 25V X7R	AVX 06033C152JAT2A
9	1	C19	CAP, 0603 82pF 5% 25V NPO	AVX 06033A820JAT2A
10	1	R9	RES, 0603 124k 1% 1/10W	VISHAY CRCW0603124K0FKEA
11	1	R20	RES. 0603 100k 5% 1/10W	VISHAY CRCW0603100KJNEA
12	1	R15	RES, 0603 30.1k 1% 1/10W	VISHAY CRCW060330K1FKEA
<b>Additional Demo Board Components</b>				
1	1	Q1	XSTR, MOSFET, N-CHANNEL 30V	VISHAY SUD50N03-09P-GE3
2	1	R1	RES, 0603 10k 5% 1/10W	VISHAY CRCW060310K0JNEA
3	1	R2	RES, 2512 0.015 $\Omega$ 1% 1W	VISHAY WSL2512R0150FEA
4	2	R3, R13	RES, 0603 60.4k 1% 1/10W	VISHAY CRCW060360K4FKEA
5	2	R4, R12	RES, 0603 90.9k 1% 1/10W	VISHAY CRCW060390K9FKEA
6	1	R7	RES, 0603 0 $\Omega$ JUMPER	VISHAY CRCW06030000Z0ED
7	1	R10	RES. 0603 20k 5% 1/10W	VISHAY CRCW060320K0JNEA
8	1	R14	RES, 0603 40.2k 1% 1/10W	VISHAY CRCW060340K2FKEA
9	2	R18, R19	RES, 0603 10 $\Omega$ 5% 1/10W	VISHAY CRCW060310R0JNEA
10	3	C1, C2, C8	CAP, 0603 1 $\mu$ F 20% 10V X5R	TAIYO YUDEN LMK107BJ105MA-T
11	0	C3, C4, C13, C22, C23	CAP, 1210 OPTION	OPTION
12	0	C7	CAP, 0805 OPTION	OPTION
13	0	C14, C15, C17, C20, C21	CAP, 0603 OPTION	OPTION
14	0	R5, R6, R8, R11, R16	RES, 0603 OPTION	OPTION
<b>Hardware</b>				
1	11	E1-E11	TURRET	MILL-MAX 2501-2-00-80-00-00-07-0
2	2	JP1, JP2	HEADER, 3-PIN, 2mm	SAMTEC TMM-103-02-L-S
3	4	JP1, JP2, JP3, JP4	SHUNT	SAMTEC 2SN-BK-G
4	2	JP3, JP4	HEADER, 4-PIN, DOUBLE ROW, 2mm	SAMTEC TMM-104-02-L-D
5	4	J1, J2, J5, J6	JACK, BANANA	KEYSTONE 575-4
6	2	J3, J4	CONN., VERT. PC-MNT, BNC 50 OHM	CONNEX 112404
7	4	MH1, MH2, MH3, MH4	STANDOFF, SNAP ON	KEYSTONE_8834

SCHEMATIC DIAGRAM



REVISION HISTORY		
ECO	REV	DESCRIPTION
	1	PHOD
		DATE
		11/07/12
		APPROVED
		YAN.L

**LINEAR TECHNOLOGY**  
 1830 McCarthy Blvd.  
 Milpitas, CA 95035  
 Phone: (408)432-1900 www.linear.com  
 Fax: (408)434-0307  
 LTC Confidential-For Customer Use Only

**TITLE: SCHEMATIC**  
**HIGH EFFICIENCY 20A STEP-DOWN POWER μMODULE® REGULATOR**

IC NO. LTM4637EV  
 DEMO CIRCUIT 1872A  
 REV. 1

DATE: 11/15/12 11:51:09  
 SHEET 1 OF 1

**APPROVALS**

PCB DES.	MI
APP ENG.	YAN.L

**CUSTOMER NOTICE**  
 LINEAR TECHNOLOGY HAS MADE A BEST EFFORT TO DESIGN A CIRCUIT THAT MEETS CUSTOMER-SUPPLIED SPECIFICATIONS; HOWEVER, IT REMAINS THE CUSTOMER'S RESPONSIBILITY TO VERIFY PROPER AND RELIABLE OPERATION IN THE ACTUAL APPLICATION. APPLICATIONS ENGINEERING DEPARTMENT WILL ADVISE YOU IF ANY BOARD LAYOUT MAY SIGNIFICANTLY AFFECT CIRCUIT PERFORMANCE OR RELIABILITY. CONTACT LINEAR TECHNOLOGY APPLICATIONS ENGINEERING FOR ASSISTANCE.

**SCALE = NONE**

THIS CIRCUIT IS PROPRIETARY TO LINEAR TECHNOLOGY AND SUPPLIED FOR USE WITH LINEAR TECHNOLOGY PARTS.



Information furnished by Linear Technology Corporation is believed to be accurate and reliable. However, no responsibility is assumed for its use. Linear Technology Corporation makes no representation that the interconnection of its circuits as described herein will not infringe on existing patent rights.

# DEMO MANUAL DC1872A

---

## DEMONSTRATION BOARD IMPORTANT NOTICE

Linear Technology Corporation (LTC) provides the enclosed product(s) under the following **AS IS** conditions:

This demonstration board (DEMO BOARD) kit being sold or provided by Linear Technology is intended for use for **ENGINEERING DEVELOPMENT OR EVALUATION PURPOSES ONLY** and is not provided by LTC for commercial use. As such, the DEMO BOARD herein may not be complete in terms of required design-, marketing-, and/or manufacturing-related protective considerations, including but not limited to product safety measures typically found in finished commercial goods. As a prototype, this product does not fall within the scope of the European Union directive on electromagnetic compatibility and therefore may or may not meet the technical requirements of the directive, or other regulations.

If this evaluation kit does not meet the specifications recited in the DEMO BOARD manual the kit may be returned within 30 days from the date of delivery for a full refund. **THE FOREGOING WARRANTY IS THE EXCLUSIVE WARRANTY MADE BY THE SELLER TO BUYER AND IS IN LIEU OF ALL OTHER WARRANTIES, EXPRESSED, IMPLIED, OR STATUTORY, INCLUDING ANY WARRANTY OF MERCHANTABILITY OR FITNESS FOR ANY PARTICULAR PURPOSE. EXCEPT TO THE EXTENT OF THIS INDEMNITY, NEITHER PARTY SHALL BE LIABLE TO THE OTHER FOR ANY INDIRECT, SPECIAL, INCIDENTAL, OR CONSEQUENTIAL DAMAGES.**

The user assumes all responsibility and liability for proper and safe handling of the goods. Further, the user releases LTC from all claims arising from the handling or use of the goods. Due to the open construction of the product, it is the user's responsibility to take any and all appropriate precautions with regard to electrostatic discharge. Also be aware that the products herein may not be regulatory compliant or agency certified (FCC, UL, CE, etc.).

No License is granted under any patent right or other intellectual property whatsoever. **LTC assumes no liability for applications assistance, customer product design, software performance, or infringement of patents or any other intellectual property rights of any kind.**

LTC currently services a variety of customers for products around the world, and therefore this transaction **is not exclusive**.

**Please read the DEMO BOARD manual prior to handling the product.** Persons handling this product must have electronics training and observe good laboratory practice standards. **Common sense is encouraged.**

This notice contains important safety information about temperatures and voltages. For further safety concerns, please contact a LTC application engineer.

Mailing Address:

Linear Technology  
1630 McCarthy Blvd.  
Milpitas, CA 95035

Copyright © 2004, Linear Technology Corporation

# Mouser Electronics

Authorized Distributor

Click to View Pricing, Inventory, Delivery & Lifecycle Information:

[Analog Devices Inc.:](#)

[DC1872A](#)