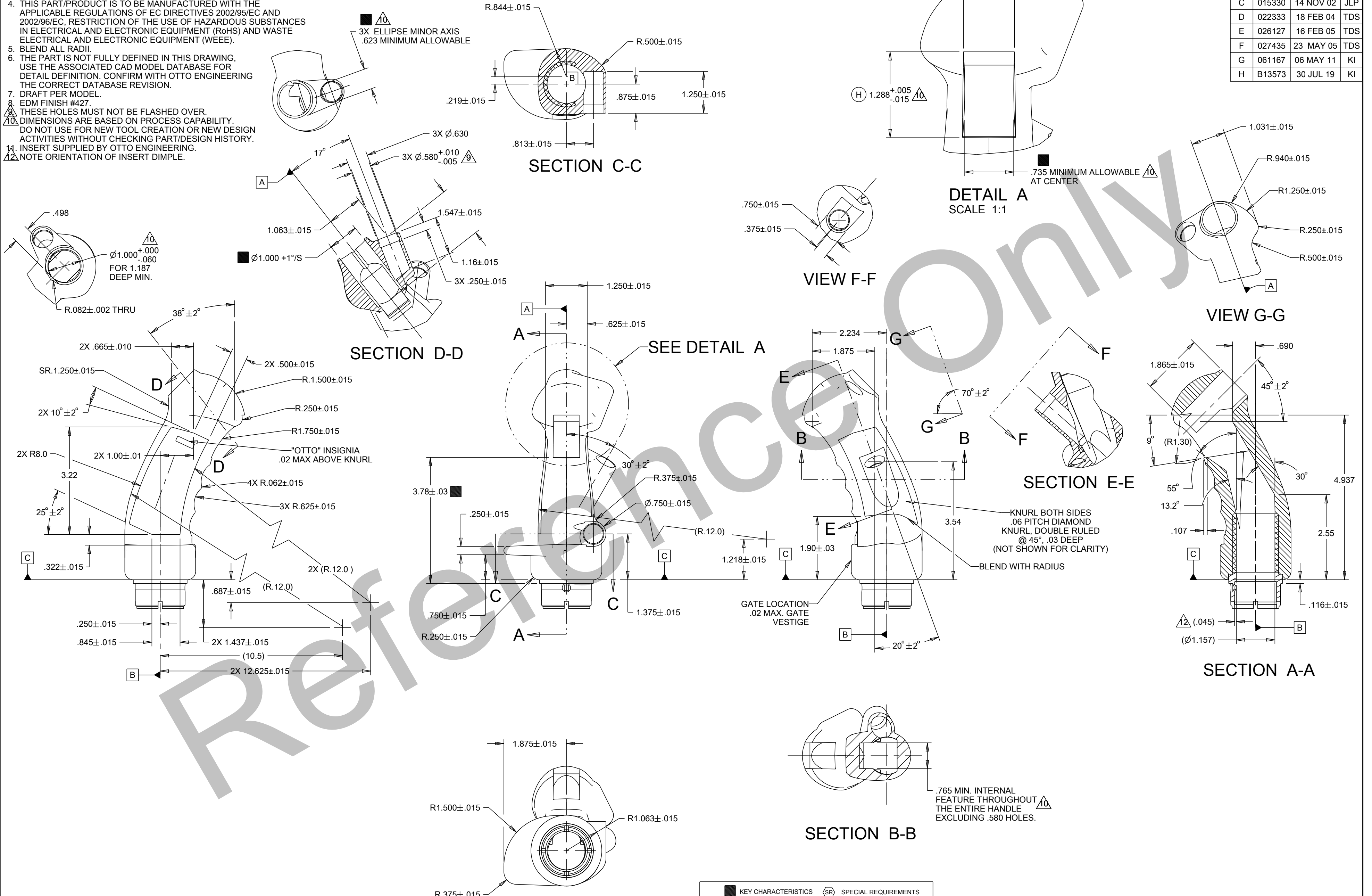


NOTES:

- CHANGE OF MATERIAL IS NOT PERMITTED UNLESS APPROVED IN WRITING BY OTTO ENGINEERING PERSONNEL.
- DRAWING TO BE INTERPRETED IN ACCORDANCE WITH THE CURRENT REVISION OF ASME Y14.5.
- TSI TO BE INTERPRETED AS THEORETICAL SHARP INTERSECTION.
- THIS PART/PRODUCT IS TO BE MANUFACTURED WITH THE APPLICABLE REGULATIONS OF EC DIRECTIVES 2002/95/EC AND 2002/96/EC. RESTRICTION OF THE USE OF HAZARDOUS SUBSTANCES IN ELECTRICAL AND ELECTRONIC EQUIPMENT (RoHS) AND WASTE ELECTRICAL AND ELECTRONIC EQUIPMENT (WEEE).
- BLEND ALL RADII.
- THE PART IS NOT FULLY DEFINED IN THIS DRAWING, USE THE ASSOCIATED CAD MODEL DATABASE FOR DETAIL DEFINITION. CONFIRM WITH OTTO ENGINEERING THE CORRECT DATABASE REVISION.
- DRAFT PER MODEL.
- EDM FINISH #427.
- THESE HOLES MUST NOT BE FLASHED OVER.
- DIMENSIONS ARE BASED ON PROCESS CAPABILITY. DO NOT USE FOR NEW TOOL CREATION OR NEW DESIGN ACTIVITIES WITHOUT CHECKING PART/DESIGN HISTORY.
- INSERT SUPPLIED BY OTTO ENGINEERING.
- NOTE ORIENTATION OF INSERT DIMPLE.

401651

REV	ECN #	DATE	APR
A	000692	24 MAR 99	RE
B	001653	14 JUL 99	RE
C	015330	14 NOV 02	JLP
D	022333	18 FEB 04	TDS
E	026127	16 FEB 05	TDS
F	027435	23 MAY 05	TDS
G	061167	06 MAY 11	KI
H	B13573	30 JUL 19	KI



PROCESS:	MATERIAL: 20% GLASS FILLED POLY-PROPYLENE DULL BLACK COLOR #37038 PER FED-STD-595	<p>CARPENTERSVILLE, ILLINOIS USA</p>	DESCRIPTION G2, GRIP MC-2 STYLE PLASTIC 5 SWITCHES				
UNLESS OTHERWISE SPECIFIED: DIMENSIONS ARE IN INCHES. TOLERANCES ARE AS LISTED. MUST BE FREE FROM BURRS AND SHARP EDGES.	TOLERANCES XX ±.01 XXX ±.005 ANGLES ±1° SURFACES 64 MICROINCH DO NOT SCALE DRAWING.		THIS DOCUMENT IS THE CONFIDENTIAL PROPERTY OF OTTO ENGINEERING, INC.. IT IS NOT TO BE USED IN ANY WAY DETRIMENTAL TO THE INTERESTS OF OTTO ENGINEERING, INC..	DRWN. JK CHKD. KI APPD. AH WT.	SIZE C	FSCM NO 21649	DRAWING NO. 401651
			THIRD ANGLE PROJECTION	SCALE 1:1	SHEET 1 OF 1		

Mouser Electronics

Authorized Distributor

Click to View Pricing, Inventory, Delivery & Lifecycle Information:

[OTTO:](#)

[OMIS-401651](#)