

HDC HE 10 MP**Weidmüller Interface GmbH & Co. KG**

Klingenbergstraße 26

D-32758 Detmold

Germany

www.weidmueller.com



The PUSH IN connection is a direct-insert method of connection. The preprocessed wire can be inserted directly into the wire connection without the need for any tools.

Number of poles: **10**

Rated current: **16 A**

Rated voltage: **500 V**

Nominal voltage acc. to UL/CSA: **600 V AC/DC**

PUSH IN technology

General ordering data

| | |
|------------|--|
| Version | HDC insert, Male, 500 V, 16 A, Number of poles: 10, PUSH IN, Size: 4 |
| Order No. | 1873550000 |
| Type | HDC HE 10 MP |
| GTIN (EAN) | 4032248458165 |
| Qty. | 1 pc(s). |

Creation date January 28, 2022 9:17:43 PM CET

Catalogue status 14.01.2022 / We reserve the right to make technical changes.

HDC HE 10 MP

Weidmüller Interface GmbH & Co. KG

Klingenbergstraße 26

D-32758 Detmold

Germany

www.weidmueller.com

Technical data

Dimensions and weights

| | | | |
|------------|---------|-----------------|------------|
| Depth | 64 mm | Depth (inches) | 2.52 inch |
| Height | 34.3 mm | Height (inches) | 1.35 inch |
| Width | 34 mm | Width (inches) | 1.339 inch |
| Net weight | 56 g | | |

Temperatures

Limit temperature -40 °C ... 125 °C

Environmental Product Compliance

| | | |
|---------------------|--|---------------------------|
| REACH SVHC | Lead 7439-92-1, Potassium perfluorobutane sulfonate 29420-49-3 | |
| Chemical resistance | Substance | Acetone |
| | Chemical resistance | Resistant |
| | Substance | Ammonia, watery |
| | Chemical resistance | Conditionally resistant |
| | Substance | Petrol |
| | Chemical resistance | Resistant |
| | Substance | Benzene |
| | Chemical resistance | Resistant |
| | Substance | Diesel oil |
| | Chemical resistance | Conditionally resistant |
| | Substance | Acetic acid, concentrated |
| | Chemical resistance | Resistant |
| | Substance | Potassium hydroxide |
| | Chemical resistance | Conditionally resistant |
| | Substance | Methanol |
| | Chemical resistance | Conditionally resistant |
| | Substance | Motor oil |
| Chemical resistance | Conditionally resistant | |
| Substance | Lye, diluted | |
| Chemical resistance | Resistant | |
| Substance | Hydrochlorofluorocarbons | |
| Chemical resistance | Conditionally resistant | |
| Substance | Outdoor use | |
| Chemical resistance | Conditionally resistant | |

Dimensions

| | | | |
|----------------|---------|-------------------|-------|
| Height of plug | 34.3 mm | Total length base | 64 mm |
| Width | 34 mm | | |

HDC HE 10 MP

Weidmüller Interface GmbH & Co. KG

Klingenbergstraße 26

D-32758 Detmold

Germany

www.weidmueller.com

Technical data

General data

| | | | |
|------------------------------|-------------------|--------------------------------------|---|
| BG | 4 | Insulating material | PC glass-fibre reinforced (UL-listed and railway-certified) |
| Insulating material group | IIIa | Insulation strength | 10 ¹⁰ Ω |
| Material | Copper alloy | Number of poles | 10 |
| Plugging cycles, silver | ≥ 500 | Pollution severity | 3 |
| Rated current (DIN EN 61984) | 16 A | Rated impulse voltage (DIN EN 61984) | 6 kV |
| Rated voltage (DIN EN 61984) | 500 V | Rated voltage according to UL/CSA | 600 V AC/DC |
| Series | HE | Size | 4 |
| Surface finish | Silver passivated | Type | Male |
| UL 94 flammability rating | V-0 | Volume resistance | ≤2 mΩ |

Connection data PE

| | | | |
|---------------------------------------|--------------|---------------------------------------|-------------------|
| Blade size, slotted (PE connection) | SD 0.8 x 4.0 | Connection type PE | Screw connection |
| Fixing screw | M 4 | Rated cross-section | 4 mm ² |
| Stripping length PE connection | 10 mm | Tightening torque, max. PE connection | 1.5 Nm |
| Tightening torque, min. PE connection | 1.2 Nm | Wire cross section, AWG (PE), max. | AWG 12 |
| Wire cross section, AWG (PE), min. | AWG 20 | | |

Version

| | | | |
|---|---------------------|---|---------------------|
| BG | 4 | Blade size, slotted (screw connection) | SD 0.5 x 3.0 |
| Conductor cross-section, max. | 2.5 mm ² | Conductor cross-section, min. | 0.5 mm ² |
| Material | Copper alloy | Size | 4 |
| Stripping length, rated connection | 10 mm | Surface finish | Silver passivated |
| Type of connection | PUSH IN | Volume resistance | ≤2 mΩ |
| Wire connection cross section, finely stranded, max. | 2.5 mm ² | Wire connection cross section, finely stranded, min. | 0.5 mm ² |
| Wire connection cross-section, finely stranded with wire-end ferrules DIN 46228/1, max. | 2.5 mm ² | Wire connection cross-section, finely stranded with wire-end ferrules DIN 46228/1, min. | 0.5 mm ² |
| Wire connection cross-section, finely stranded with wire-end ferrules DIN 46228/4, max. | 1.5 mm ² | Wire connection cross-section, finely stranded with wire-end ferrules DIN 46228/4, min. | 0.5 mm ² |
| Wire cross-section, solid, max. | 1.5 mm ² | Wire cross-section, solid, min. | 0.5 mm ² |

Classifications

| | | | |
|-------------|-------------|-------------|-------------|
| ETIM 6.0 | EC000438 | ETIM 7.0 | EC000438 |
| ETIM 8.0 | EC000438 | ECLASS 9.0 | 27-44-02-05 |
| ECLASS 9.1 | 27-44-02-05 | ECLASS 10.0 | 27-44-02-05 |
| ECLASS 11.0 | 27-44-02-05 | | |

Approvals

Approvals



| | |
|-----------------------|---------|
| ROHS | Conform |
| UL File Number Search | E310075 |

Creation date January 28, 2022 9:17:43 PM CET

Catalogue status 14.01.2022 / We reserve the right to make technical changes.

3

HDC HE 10 MP

Weidmüller Interface GmbH & Co. KG
Klingenbergstraße 26
D-32758 Detmold
Germany

www.weidmueller.com

Technical data**Downloads**

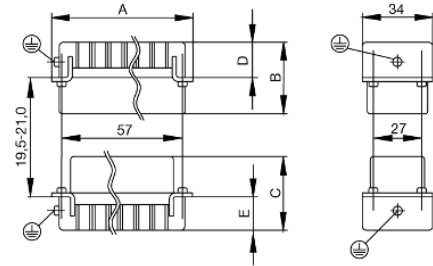
| | |
|-------------------------|--|
| Engineering Data | CAD data – STEP |
| Engineering Data | EPLAN, WSCAD |
| Technical Documentation | 1873550000 HDC HE 10 MP STP Blatt_1.pdf |
| Catalogues | Catalogues in PDF-format |
| Brochures | FL FIELDWIRING EN FL FIELDWIRING EN |

HDC HE 10 MP

Weidmüller Interface GmbH & Co. KG
Klingenbergstraße 26
D-32758 Detmold
Germany

www.weidmueller.com

Drawings



HDC HE 10 MP

Weidmüller Interface GmbH & Co. KG
 Klingenbergstraße 26
 D-32758 Detmold
 Germany

www.weidmueller.com

Accessories

Slotted screwdriver



VDE insulated slot-head screwdriver, SDI DIN 7437, ISO 2380/2, drive output acc. to DIN 5264, ISO 2380/1. SoftFinish grip

General ordering data

| | | |
|------------|----------------------------|--------------------------|
| Type | SDIS 0.4X2.5X75 | Version |
| Order No. | 9008370000 | Screwdriver, Screwdriver |
| GTIN (EAN) | 4032248056330 | |
| Qty. | 1 pc(s). | |
| Type | SDIS 0.8X4.0X100 | Version |
| Order No. | 9008400000 | Screwdriver, Screwdriver |
| GTIN (EAN) | 4032248056361 | |
| Qty. | 1 pc(s). | |
| Type | SDIS 0.6X3.5X100 | Version |
| Order No. | 9008390000 | Screwdriver, Screwdriver |
| GTIN (EAN) | 4032248056354 | |
| Qty. | 1 pc(s). | |

Crosshead screwdriver Phillips



VDE insulated crosshead screwdriver, for Phillips screws, SDIK PH DIN 7438, ISO 8764/2-PH, output to ISO 8764-PH, SoftFinish grip

General ordering data

| | | |
|------------|----------------------------|--------------------------|
| Type | SDIK PH1 | Version |
| Order No. | 9008570000 | Screwdriver, Screwdriver |
| GTIN (EAN) | 4032248056569 | |
| Qty. | 1 pc(s). | |

HDC HE 10 MP

Weidmüller Interface GmbH & Co. KG
 Klingenbergstraße 26
 D-32758 Detmold
 Germany

www.weidmueller.com

Accessories

Slotted screwdriver



Slotted screwdriver with rounded blade SD DIN 5265, ISO 2380/2, output to DIN 5264, ISO 2380/1. ChromTop tip, SoftFinish grip

General ordering data

| | | |
|------------|----------------------------|--------------------------|
| Type | SDS 0.8X4.0X100 | Version |
| Order No. | 9008340000 | Screwdriver, Screwdriver |
| GTIN (EAN) | 4032248056293 | |
| Qty. | 1 pc(s). | |
| Type | SDS 0.6X3.5X100 | Version |
| Order No. | 9008330000 | Screwdriver, Screwdriver |
| GTIN (EAN) | 4032248056286 | |
| Qty. | 1 pc(s). | |
| Type | SDS 0.4X2.5X75 | Version |
| Order No. | 9009030000 | Screwdriver, Screwdriver |
| GTIN (EAN) | 4032248266944 | |
| Qty. | 1 pc(s). | |

DSTV



Various accessories are available for our inserts. This includes coding elements for the inserts.

General ordering data

| | | |
|------------|----------------------------|--|
| Type | DSTV COBU5 | Version |
| Order No. | 1471500000 | Heavy-duty connectors, Accessories, Coding element |
| GTIN (EAN) | 4008190178543 | |
| Qty. | 100 pc(s). | |
| Type | DSTV COST4 | Version |
| Order No. | 1471300000 | Heavy-duty connectors, Accessories, Coding System |
| GTIN (EAN) | 4008190017354 | |
| Qty. | 100 pc(s). | |

Data sheet**HDC HE 10 MP**

Weidmüller Interface GmbH & Co. KG
Klingenbergstraße 26
D-32758 Detmold
Germany

www.weidmueller.com

Accessories**Crosshead screwdriver Phillips**

Crosshead screwdriver, Phillips, SDK PH DIN 5262, ISO 8764/2-PH, output to ISO 8764-PH, ChromTop tip, SoftFinish grip

General ordering data

| | | |
|------------|----------------------------|--------------------------|
| Type | SDK PH1 | Version |
| Order No. | 9008480000 | Screwdriver, Screwdriver |
| GTIN (EAN) | 4032248056477 | |
| Qty. | 1 pc(s). | |

Tightening torques and screwing tools

| Screw size | Connector type | Dia. tightening torque in Nm | Recommended blade inserts and AF size for hexagon socket |
|---------------------------------------|---|---|--|
| M 2.5 | Signal contacts | | |
| | S 6/6 | 0.5 - 0.55 | SD 0.6 x 3.5 mm or PZO |
| | S 6/12 | 0.5 - 0.55 | SD 0.6 x 3.5 mm or PZO |
| M 2.9 x 0.5 | Fastening screws | | |
| | HQ 4/2 | 0.8 (plastic) / 1.1 (metal) | SD 0.6 x 3.5 mm or PH0 |
| | HQ 8 | 0.8 (plastic) / 1.1 (metal) | SD 0.6 x 3.5 mm or PH0 |
| | HQ 17 | 0.8 (plastic) / 1.1 (metal) | SD 0.6 x 3.5 mm or PH0 |
| M 3 | Contact screws | | |
| | HA 3 | 0.5 - 0.55 | SD 0.5 x 3.0 mm |
| | HA 4 | 0.5 - 0.55 | SD 0.5 x 3.0 mm |
| | HA 10 bis HA 48 | 0.5 - 0.55 | SD 0.6 x 3.5 mm or PH0 |
| | HE | 0.5 - 0.55 | SD 0.6 x 3.5 mm or PZO |
| | HVE | 0.5 - 0.55 | SD 0.6 x 3.5 mm or PZO |
| | Signal contacts: | | |
| | S 4/2 | 0.5 - 0.55 | SD 0.6 x 3.5 mm or PZO |
| | S 4/8 | 0.5 - 0.55 | SD 0.6 x 3.5 mm or PZO |
| | PE connection via female contact | | |
| | S 4 | 0.5 - 0.8 | SD 0.6 x 3.5 mm |
| | ConCept modular frame, metal | 0.5 - 0.55 | SD 0.6 x 3.5 mm |
| | PE terminal | | |
| | HQ 5 | 0.5 - 0.55 | SD 0.6 x 3.5 or 0.8 x 4 mm |
| | HQ 7 | 0.5 - 0.55 | SD 0.6 x 3.5 or 0.8 x 4 mm |
| | Fastening screws | 0.5 - 0.55 | SD 0.6 x 3.5 mm or PZO |
| | Guide pin | 0.5 - 0.55 | SD 0.6 x 3.5 mm or PZO |
| | Guide bush | 0.5 - 0.55 | SD 0.6 x 3.5 mm or PZO |
| | Coding pins | 0.5 - 0.55 | SD 0.6 x 3.5 mm or PZO |
| | M 4 | Contact screws | |
| HSB | | 1.2 - 1.5 | SD 0.6 x 3.5 or 0.8 x 4 mm or PZ1 |
| PE connection via male contact | | | |
| S 4 | | 0.5 - 0.8 | SD 0.6 x 3.5 mm |
| ConCept modular frame, metal | | 1.2 - 1.5 | SD 0.6 x 3.5 mm |
| PE terminal | | | |
| HA | | 1.2 - 1.5 | SD 0.6 x 3.5 or 0.8 x 4 mm or PH1 |
| HE | | 1.2 - 1.5 | SD 0.6 x 3.5 or 0.8 x 4 mm or PH1 |
| HEE | | 1.2 - 1.5 | SD 0.6 x 3.5 or 0.8 x 4 mm or PH1 |
| HVE | | 1.2 - 1.5 | SD 0.6 x 3.5 or 0.8 x 4 mm or PH1 |
| HD | | 1.2 - 1.5 | SD 0.6 x 3.5 or 0.8 x 4 mm or PZ1 |
| HDD | | 1.2 - 1.5 | SD 0.6 x 3.5 or 0.8 x 4 mm or PZ1 |
| S 6/6 (for signal contacts) | | 1.2 - 1.5 | 0.8 x 4 mm or PZ1 |
| ConCept modular frame, plastic | | 1.2 - 1.5 | 0.8 x 4 mm or PZ1 |
| M 5 | | PE terminal | |
| | HSB | 2 - 2.5 | SD 1 x 5.5 mm or PZ2 |
| | S 4/0 (Screw connection) | 2 - 2.5 | SD 1.2 x 6.5 mm or PH2 |
| | S 4/0 (Axial screw connection) | 2 - 2.5 | SD 0.8 x 4 mm or PZ 2 |
| | S 4/2 | 2 - 2.5 | SD 1.2 x 6.5 mm or PH2 |
| | S 4/8 | 2 - 2.5 | SD 1.2 x 6.5 mm or PH2 |
| | S 6/12 | 2 - 2.5 | SD 0.8 x 4 mm or PZ 2 |
| | S 6/36 | 2 - 2.5 | SD 1.2 x 6.5 mm or PH2 |
| | S 8/24 | 2 - 2.5 | SD 1.2 x 6.5 mm or PH2 |
| | S 12/2 | 2 - 2.5 | SD 1.2 x 6.5 mm or PH2 |
| | M 6 | Power contacts | |
| S 4/0 (Screw connection) | | 1.2 (1.5 mm ²) / 2 (2.5 mm ²) / 3 (4-16 mm ²) | SD 0.8 x 4 mm |
| S 4/2 | | 1.2 (1.5 mm ²) / 2 (2.5 mm ²) / 3 (4-16 mm ²) | SD 0.8 x 4 mm |
| S 4/8 | | 1.2 (1.5 mm ²) / 2 (2.5 mm ²) / 3 (4-16 mm ²) | SD 0.8 x 4 mm |
| M 7 x 0.75 | Power contacts | | |
| | S 4 | 1.1 - 1.7 | SW 2 |
| | S 6/6 (+ PE) | 6 - 8 | SW 4 |
| M 8 x 0.75 | Power contacts | | |
| | S 6/12 | 1.1 - 1.7 | SW 2 |
| | S 8/0 (+ PE) | 6 (10-16 mm ²) - 7 (25 mm ²) | SW 4 |
| M10 x 1 | Power contacts | | |
| | S 4/0 (Axial connection) | 2 - 3 | SW 3 |

Increasing the tightening torque does not improve the contact resistance. The stated torque settings offer optimal mechanical, thermal and electrical conditions. Exceeding the recommended values may even damage the conductor and terminal.

Mouser Electronics

Authorized Distributor

Click to View Pricing, Inventory, Delivery & Lifecycle Information:

[Weidmuller:](#)

[1873550000](#)