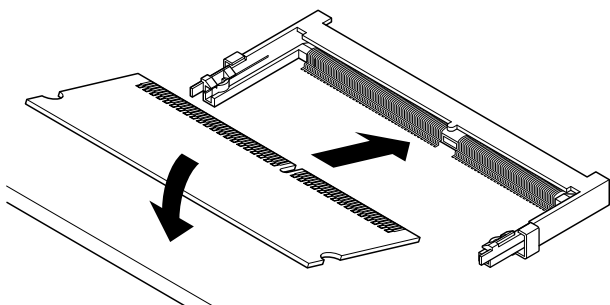




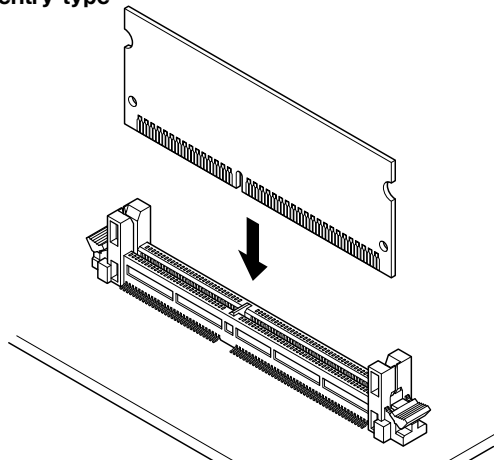
DM-144P CONNECTOR

0.8 mm pitch/Socket for S.O.DIMM

Side entry type



Top entry type



This is sockets for the S.O.DIMM of 144-circuits based on the JEDEC MO-190 standard, and its side type socket is low profile with 5.2 mm height.

- JEDEC MO-190 standard compliance
- Low profile and space saving
Mounting height: 5.2 mm/ side type, 14 mm/ top type
- Easy insertion/ejection and secure locking of modules

Specifications

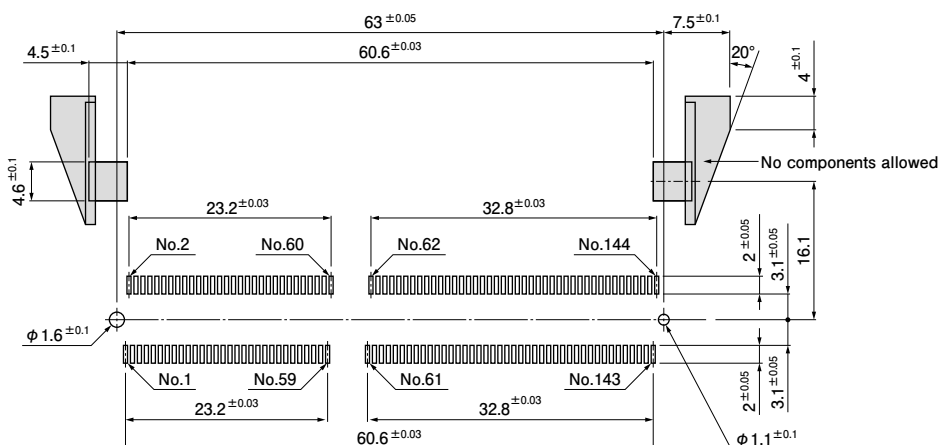
- Current rating: 0.5 A AC/DC
- Voltage rating: 250 V AC/DC
- Temperature range: -25°C to +85°C
(including temperature rise in applying electrical current)
- Contact resistance: Initial value/ 30 mΩ max.
After environmental tests/ 50 mΩ max.
- Insulation resistance: 250 MΩ min.
- Withstanding voltage: 250 VAC/minute
- * In using the products, refer to "Handling Precautions for Terminals and Connectors" described on our website (Technical documents of Product information page).
- * RoHS2 compliance
- * Dimensional unit: mm
- * Contact JST for details.

Standards

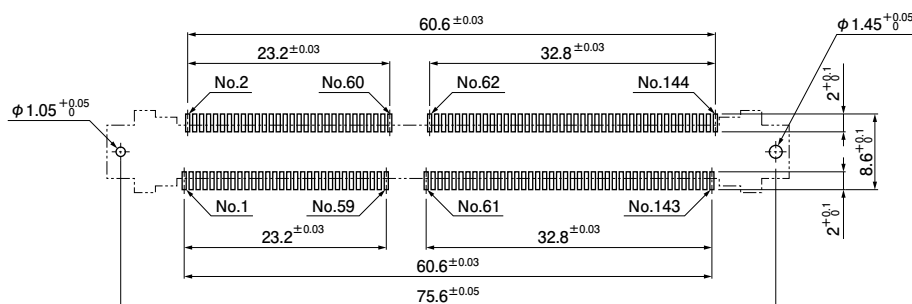
Ⓜ Recognized E60389

PC board layout

Side entry type



Top entry type

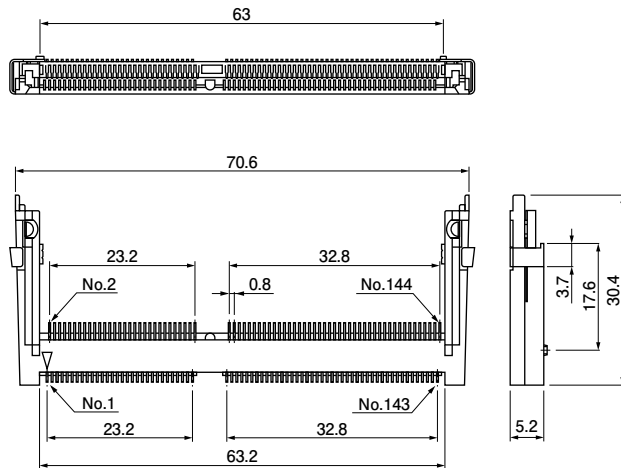


Note: 1. The above figure is the figure viewed from the connector mounting side.
2. Tolerances are non-cumulative: ± 0.03 mm for all centers.
The dimensions above should serve as a guideline. Contact JST for details.

DM-144P CONNECTOR

Connector

Side entry type



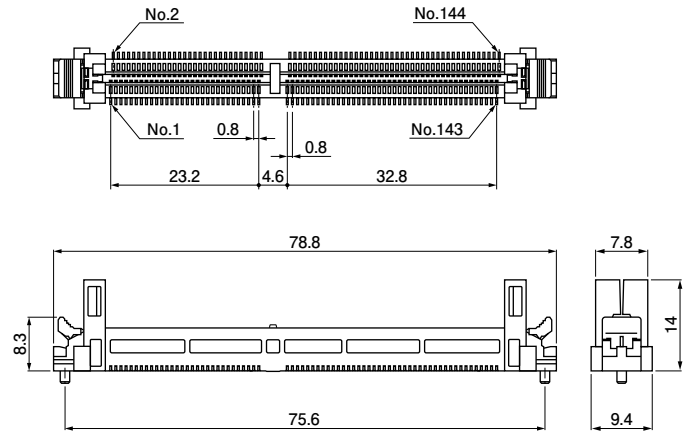
Model No.	Q'ty/box
DM-3B1-N1210 (LF)(N1)	320

Material and Finish

Contact: Copper alloy, nickel-undercoated, Mating part; gold-plated
Solder tail; tin/copper alloy-plated
Housing: Heat resisting resin, UL94V-0
Solder tab: Copper alloy, nickel-undercoated, tin-plated

RoHS2 compliance This product displays (LF)(SN) on a label.

Top entry type



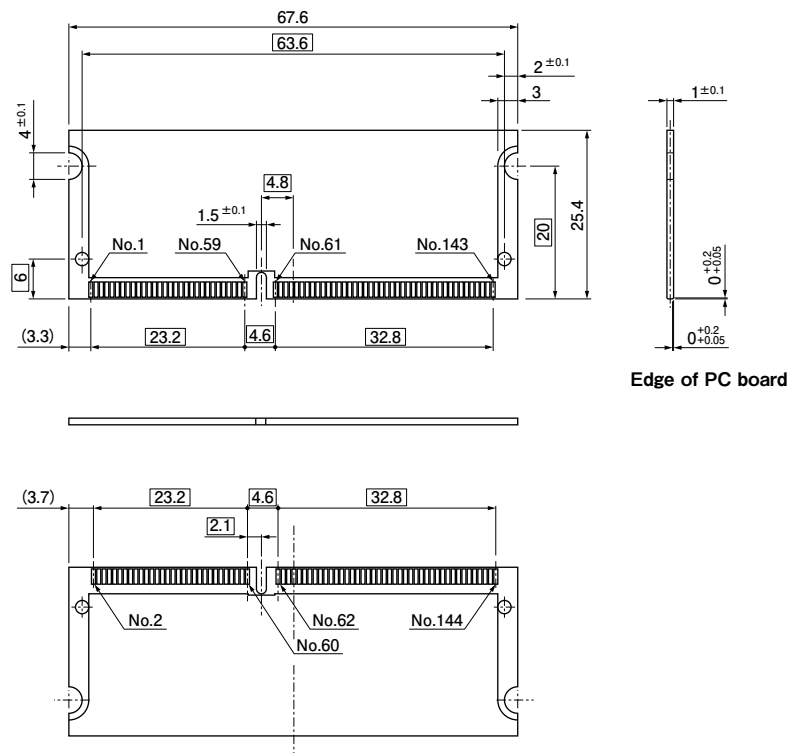
Model No.	Q'ty/box
DM-3D4-B3200	224

Material and Finish

Contact: Copper alloy, nickel-undercoated, gold-plated
Housing: Heat resisting resin, UL94V-0
Ejector: Heat resisting resin, UL94V-0

RoHS2 compliance

Applicable PC board layout (for reference)



Mouser Electronics

Authorized Distributor

Click to View Pricing, Inventory, Delivery & Lifecycle Information:

JST:

[DM-3B1-N1210\(T\)\(LF\)\(N\)](#) [DM-3B1-N1210\(LF\)](#)