

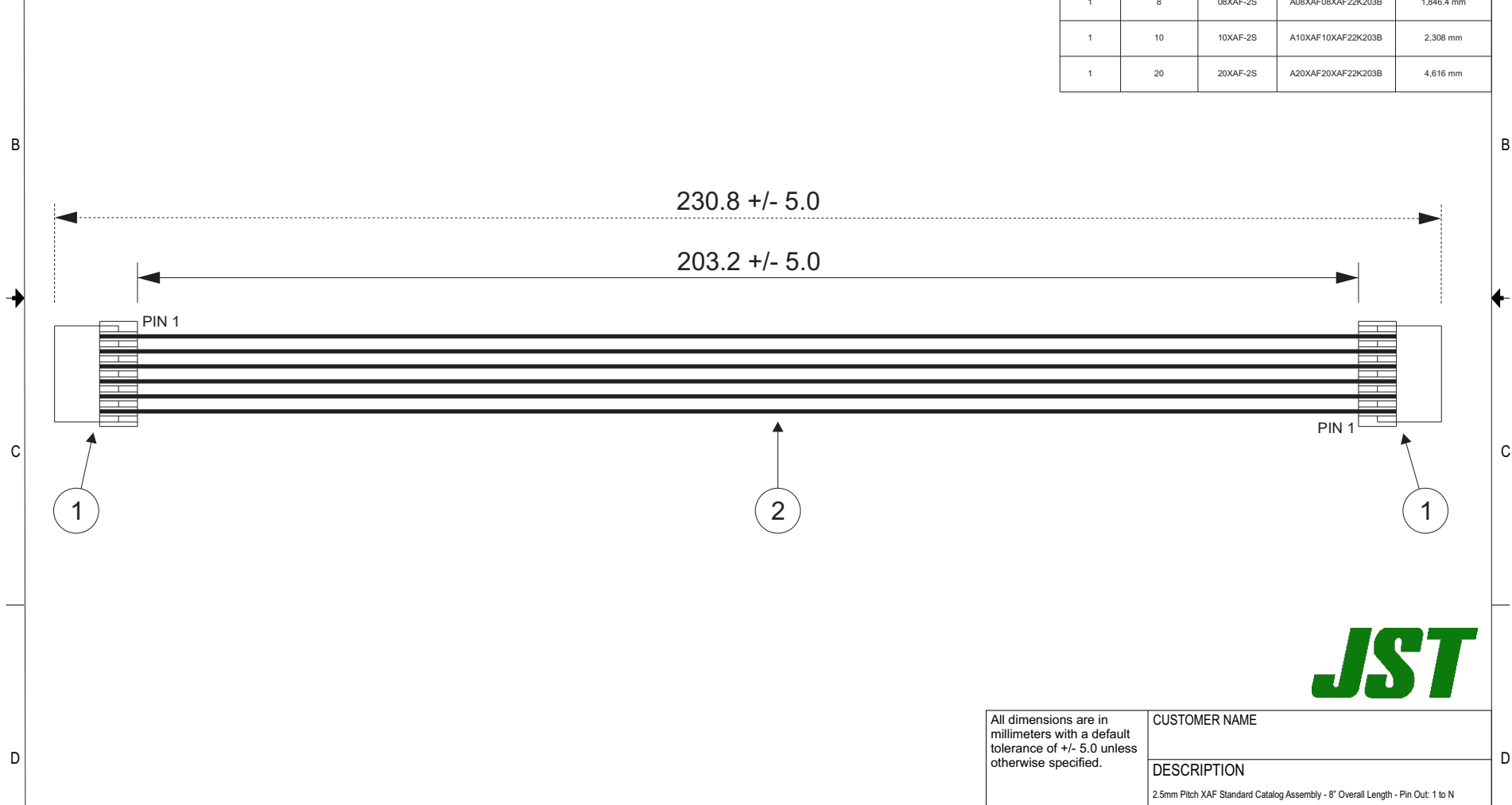
THIS DRAWING CONTAINS INFORMATION THAT IS PROPRIETARY TO J.S.T. AND SHALL NOT BE USED OR SHOWN WITHOUT WRITTEN PERMISSION.

Item No.	Part No.	Description
1	See Table 1	XAF Connector
2	UL10002, 22 AWG	Black

Electrical Specifications	
Current:	3.0A AC/DC
Voltage:	150V AC/DC

TABLE 1				
ITEM	NUMBER OF CIRCUITS	CONNECTOR PART NO.	ASSEMBLY PART NO.	TOTAL WIRE REQUIRED
1	2	02XAF-2S	A02XAF02XAF22K203B	461.6 mm
1	3	03XAF-2S	A03XAF03XAF22K203B	692.4 mm
1	4	04XAF-2S	A04XAF04XAF22K203B	923.2 mm
1	5	05XAF-2S	A05XAF05XAF22K203B	1,154 mm
1	6	06XAF-2S	A06XAF06XAF22K203B	1,384.8 mm
1	8	08XAF-2S	A08XAF08XAF22K203B	1,846.4 mm
1	10	10XAF-2S	A10XAF10XAF22K203B	2,308 mm
1	20	20XAF-2S	A20XAF20XAF22K203B	4,616 mm



All dimensions are in millimeters with a default tolerance of +/- 5.0 unless otherwise specified.		CUSTOMER NAME		
		DESCRIPTION		
		2.5mm Pitch XAF Standard Catalog Assembly - 8" Overall Length - Pin Out: 1 to N		
Drawn By: Larissa Mosley	Checked By: Steven Pilkington	SIZE	CUSTOMER PART NO.	PART NO.
		SCALE	DRAWING NO.	DATE
		1:1	GAM-546	6/21/2018

ZONE	REV	DESCRIPTION	DATE	APPROVED
1	1	Add Electrical Specifications	6/29/2018	LM

# Mouser Electronics

Authorized Distributor

Click to View Pricing, Inventory, Delivery & Lifecycle Information:

[JST:](#)

[A06XAF06XAF22K203B](#) [A05XAF05XAF22K203B](#) [A02XAF02XAF22K203B](#) [A20XAF20XAF22K152A](#)  
[A04XAF04XAF22K203B](#) [A08XAF08XAF22K203B](#) [A10XAF10XAF22K203B](#) [A03XAF03XAF22K203B](#)