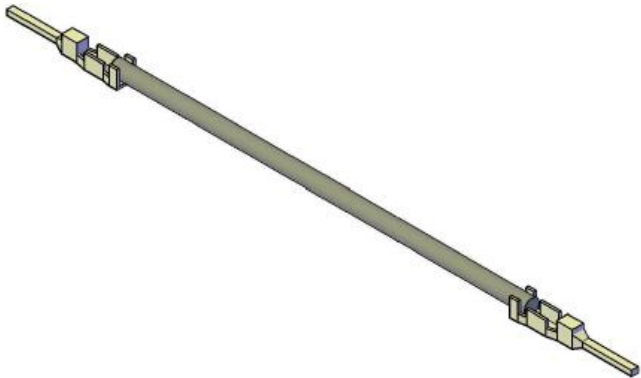
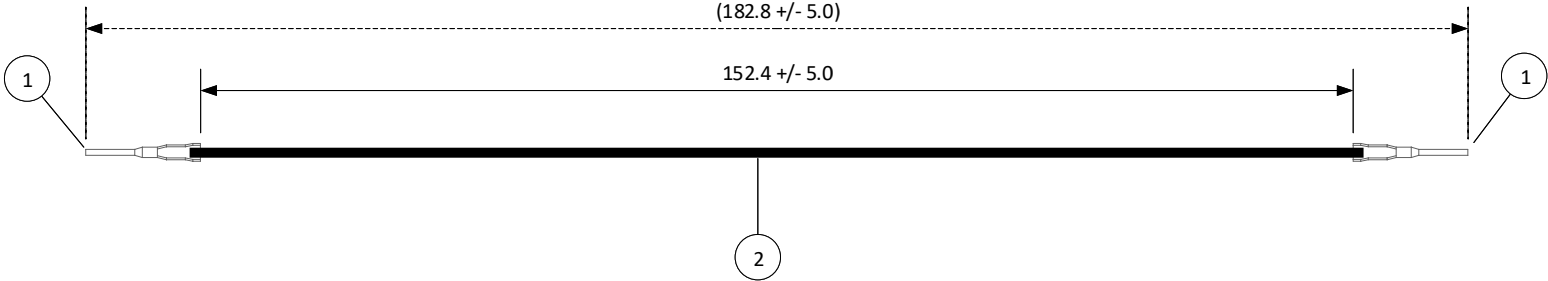


THIS DRAWING CONTAINS INFORMATION THAT IS PROPRIETARY TO J.S.T. AND SHALL NOT BE USED OR SHOWN WITHOUT WRITTEN PERMISSION.

4		3		2		1
ITEM	CONNECTOR PART NO.	DESCRIPTION	IPI CHECK	EOR CHECK	Applicable Tooling	
1	SWPT-001T-P025	JWPF CONNECTOR CONTACT			APPLICATOR	
2	UL1007, 22 AWG	BLACK				

Applicable Housings	
NO. OF CIRCUITS	HOUSING PART NO.
2	02T-JWPF-VSLE-S
3	03T-JWPF-VSLE-S
4	04T-JWPF-VSLE-S
6	06T-JWPF-VSLE-D
8	08T-JWPF-VSLE-D



SCALE 1:1		CUSTOMER NAME	CUSTOMER PART NO.
DIMENSIONS All dimensions are in MM with a tolerance of +/- 3.0 unless otherwise specified.		DESCRIPTION 2.0 mm Pitch JWPF Series Standard Leads - 6" Inside Length DOUBLE-END LEADS, M-M	
DRAWN BY STEVEN PILKINGTON		ASSEMBLY PART NO. AJWPFJWPF22K152T	
CHECKED BY JUSTIN BAKER		DRAWING NO. & REVISION GAM-173	REVISED 5/2/2016

REV.	DESCRIPTION	DATE	BY
------	-------------	------	----

# Mouser Electronics

Authorized Distributor

Click to View Pricing, Inventory, Delivery & Lifecycle Information:

[JST:](#)

[AJWPFJWPF22K102R](#)