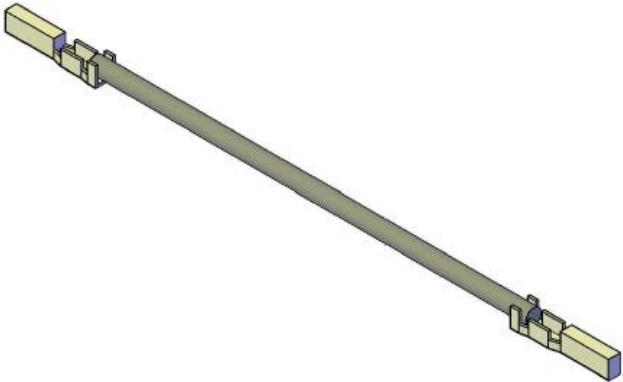
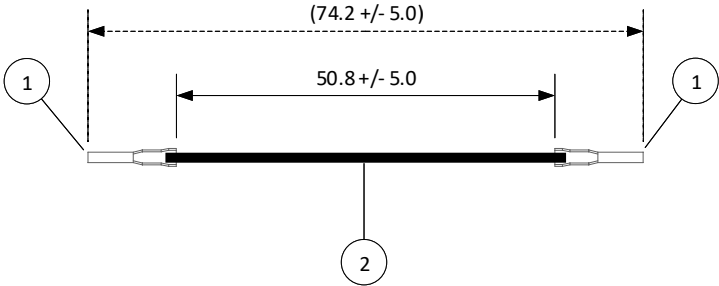


THIS DRAWING CONTAINS INFORMATION THAT IS PROPRIETARY TO J.S.T. AND SHALL NOT BE USED OR SHOWN WITHOUT WRITTEN PERMISSION.

4		3		2		1
ITEM	CONNECTOR PART NO.	DESCRIPTION	IPI CHECK	EOR CHECK	Applicable Tooling	
1	SWPR-001T-P025	JWPF CONNECTOR CONTACT			APPLICATOR	
2	UL1007, 22 AWG	BLACK				

Applicable Housings	
NO. OF CIRCUITS	HOUSING PART NO.
2	02R-JWPF-VSLE-S
3	03R-JWPF-VSLE-S
4	04R-JWPF-VSLE-S
6	06R-JWPF-VSLE-D
8	08R-JWPF-VSLE-D



JST

SCALE	CUSTOMER NAME		CUSTOMER PART NO.
1: 1			
DIMENSIONS	DESCRIPTION		
All dimensions are in MM with a tolerance of +/- 3.0 unless otherwise specified.	2.0 mm Pitch JWPF Series Standard Leads - 2" Inside Length DOUBLE-END LEADS, F-F		
DRAWN BY	ASSEMBLY PART NO.		
STEVEN PILKINGTON	AJWPFJWPF22K51R		
CHECKED BY	DRAWING NO. & REVISION	REVISED	
JUSTIN BAKER	GAM-169	5/2/2016	

REV.	DESCRIPTION	DATE	BY

4

3

2

1

Mouser Electronics

Authorized Distributor

Click to View Pricing, Inventory, Delivery & Lifecycle Information:

[JST:](#)

[AJWPFJWPF22K254T](#)