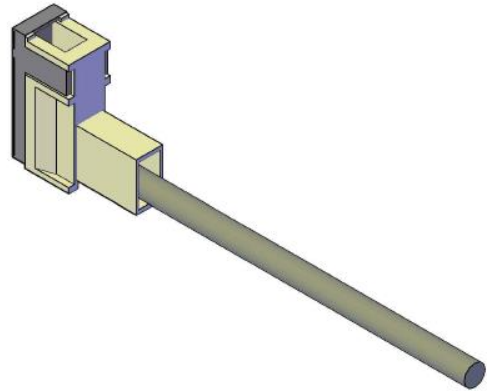
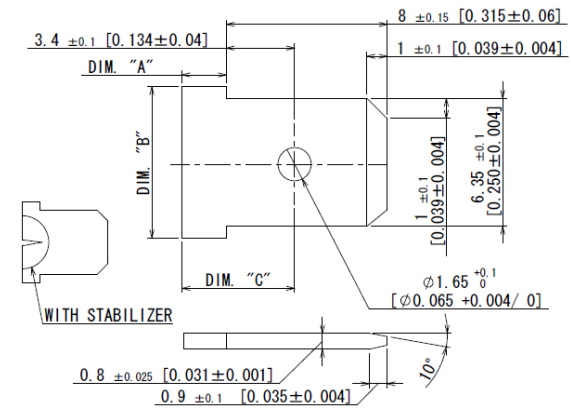
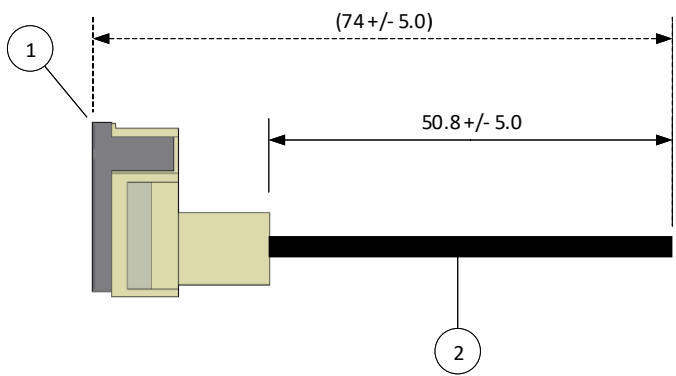


THIS DRAWING CONTAINS INFORMATION THAT IS PROPRIETARY TO J.S.T. AND SHALL NOT BE USED OR SHOWN WITHOUT WRITTEN PERMISSION.

4		3		2		1
ITEM	CONNECTOR PART NO.	DESCRIPTION	IPI CHECK	EOR CHECK	Applicable Tooling	
1	RARSP-1V-00 & RARSFC-1V	1 POS RIGHT-ANGLE RSF HOUSING & COVER			APPLICATOR	
1	RASRSF-61-250A	RIGHT-ANGLE RSF TERMINAL – BRASS			SUGGESTED MATING TAB	
2	UL1015, 16 AWG	BLACK				

	WITHOUT STABILIZER	WITH STABILIZER
DIM. "A"	2.20 [0.087] MIN	4.20 ±0.15 [0.165 ±0.006]
DIM. "B"	7.40 [0.291] MIN	7.98 [0.314] MIN
DIM. "C"	5.90 [0.232] MAX	(7.6)



				SCALE 1:1	CUSTOMER NAME	CUSTOMER PART NO.
				DIMENSIONS All dimensions are in MM with a tolerance of +/- 3.0 unless otherwise specified.	DESCRIPTION 2" INSIDE LENGTH – 1 POSITION, LIF, POS LOCK, .250, FLAG, SINGLE-END ASSY, BRASS, BLUNT LEAD, F	
				DRAWN BY STEVEN PILKINGTON	ASSEMBLY PART NO. A01RASFP16K5 1A	
				CHECKED BY JUSTIN BAKER	DRAWING NO. & REVISION GAM-145	REVISED 3/16/2016
REV.	DESCRIPTION		DATE	BY		

# Mouser Electronics

Authorized Distributor

Click to View Pricing, Inventory, Delivery & Lifecycle Information:

[JST:](#)

[A01RARSFP16K51A](#)