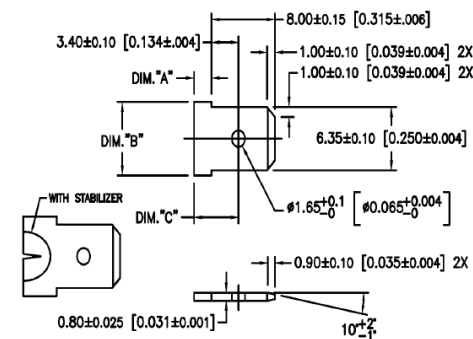


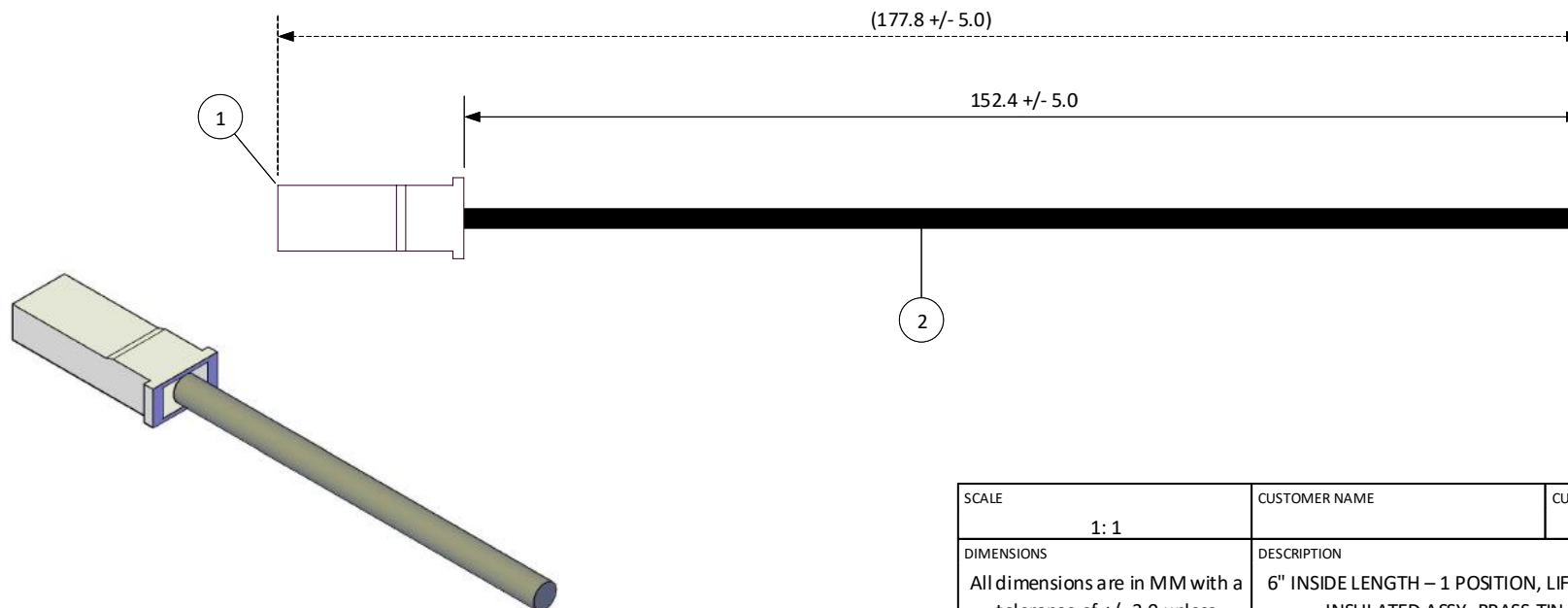
THIS DRAWING CONTAINS INFORMATION THAT IS PROPRIETARY TO J.S.T. AND SHALL NOT BE USED OR SHOWN WITHOUT WRITTEN PERMISSION.

4			3		2		1	
ITEM	CONNECTOR PART NO.	DESCRIPTION	IPI CHECK		EOR CHECK		Applicable Tooling	
1	RSFP-LP-1V-250	RSF CONNECTOR HOUSING					APPLICATOR	
2	SRSF-61T-250A	RSF CONTACT – BRASS, TIN-PLATED					SUGGESTED MATING TAB NO SCALE	
3	UL1015, 16 AWG	BLACK						

WITHOUT STABILIZER		WITH STABILIZER	
DIM. "A"	2.20 [0.087] MIN.	4.20±0.15 [0.165±0.006]	
DIM. "B"	7.40 [0.291] MIN.	7.98 [0.314] MIN.	
DIM. "C"	5.90 [0.232] MAX.	(7.6)	



MATING TAB NOTES:
4. MAT'L: BRASS.
FINISH: SUGGESTED NO PLATING.



JST

				SCALE 1: 1	CUSTOMER NAME	CUSTOMER PART NO.
				DIMENSIONS All dimensions are in MM with a tolerance of +/- 3.0 unless otherwise specified.	DESCRIPTION 6" INSIDE LENGTH – 1 POSITION, LIF, POS LOCK, .250, SINGLE-END INSULATED ASSY, BRASS TIN-PLATED, BLUNT LEAD, F	
				DRAWN BY STEVEN PILKINGTON	ASSEMBLY PART NO. A01RSFP16K152B	
				CHECKED BY JUSTIN BAKER	DRAWING NO. & REVISION GAM-107	REVISED 3/10/2016

REV.	DESCRIPTION	DATE	BY	4	3	2	1
------	-------------	------	----	---	---	---	---

Mouser Electronics

Authorized Distributor

Click to View Pricing, Inventory, Delivery & Lifecycle Information:

[JST:](#)

[A01RSFP16K152B](#)