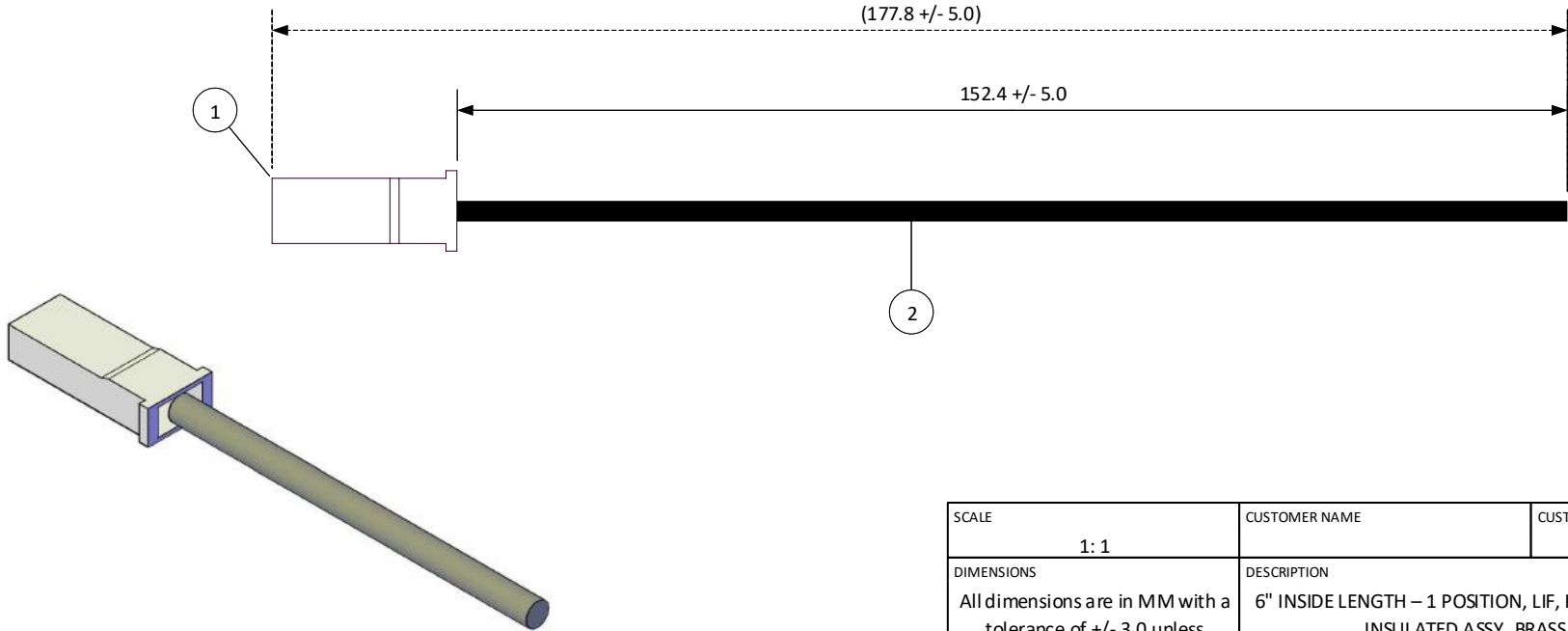


THIS DRAWING CONTAINS INFORMATION THAT IS PROPRIETARY TO J.S.T. AND SHALL NOT BE USED OR SHOWN WITHOUT WRITTEN PERMISSION.

4			3		2		1	
ITEM	CONNECTOR PART NO.	DESCRIPTION	IPI CHECK	EOR CHECK	Applicable Tooling			
1	RSFP-LP-1V-250	RSF CONNECTOR HOUSING			APPLICATOR			
2	SRSF-61-250A	RSF CONTACT - BRASS			SUGGESTED MATING TAB NO SCALE			
3	UL1015, 16 AWG	BLACK						



MATING TAB NOTES:  
4. MAT'L: BRASS.  
FINISH: SUGGESTED NO PLATING.

JST

				SCALE 1: 1	CUSTOMER NAME	CUSTOMER PART NO.
				DIMENSIONS All dimensions are in MM with a tolerance of +/- 3.0 unless otherwise specified.	DESCRIPTION 6" INSIDE LENGTH – 1 POSITION, LIF, POS LOCK, .250, SINGLE-END INSULATED ASSY, BRASS, BLUNT LEAD, F	
				DRAWN BY STEVEN PILKINGTON	ASSEMBLY PART NO. A01RSFP16K152A	
				CHECKED BY JUSTIN BAKER	DRAWING NO. & REVISION GAM-104	REVISED 3/10/2016
REV.	DESCRIPTION		DATE	BY		

# Mouser Electronics

Authorized Distributor

Click to View Pricing, Inventory, Delivery & Lifecycle Information:

[JST:](#)

[A01RSFP16K152A](#)