

PART  
NAME

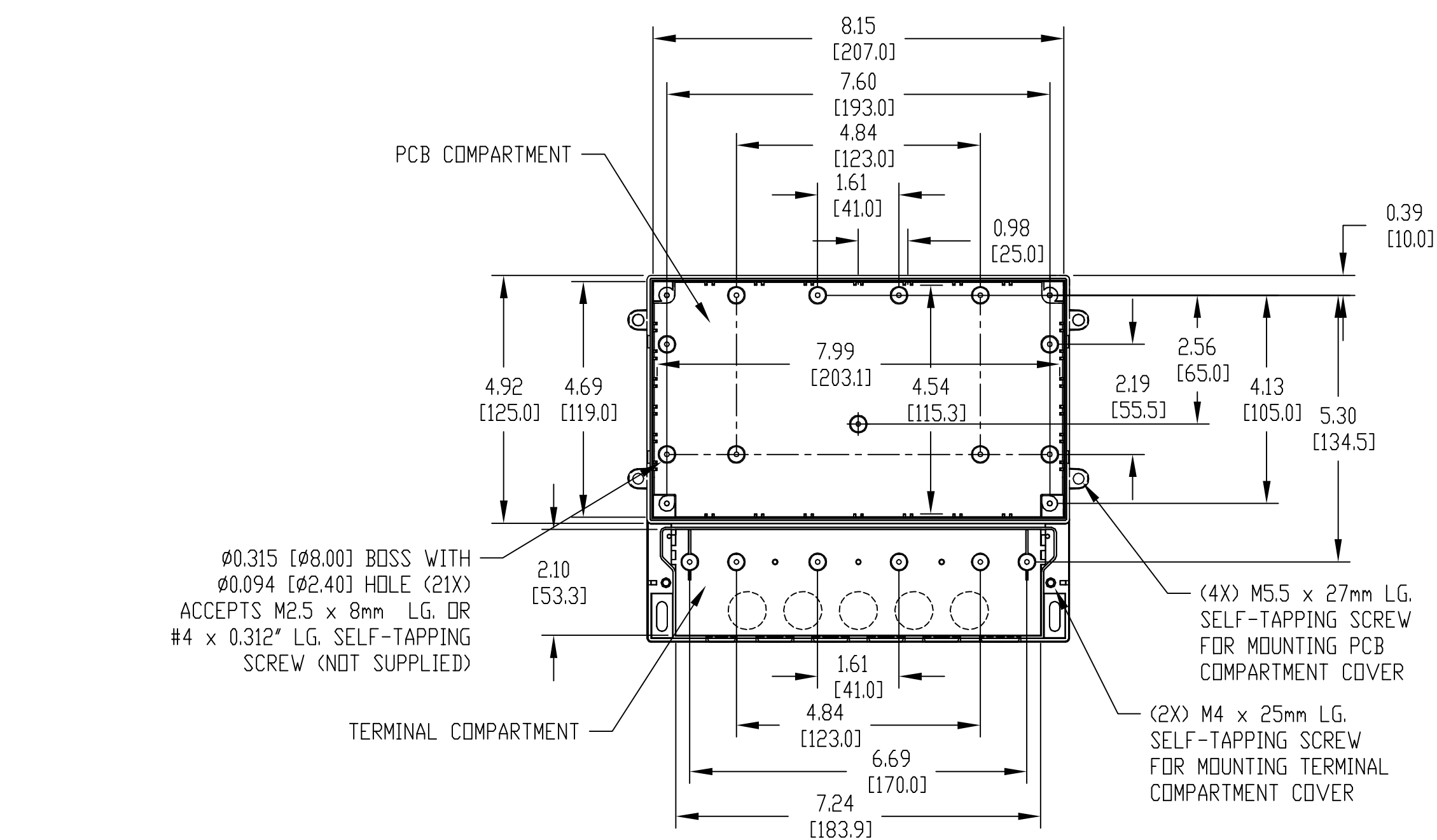
DUAL-COMPARTMENT ENCLOSURE w/SCREW-ON COVER

PART  
No.

DCS-11902

REV.  
DATE

7-30-12

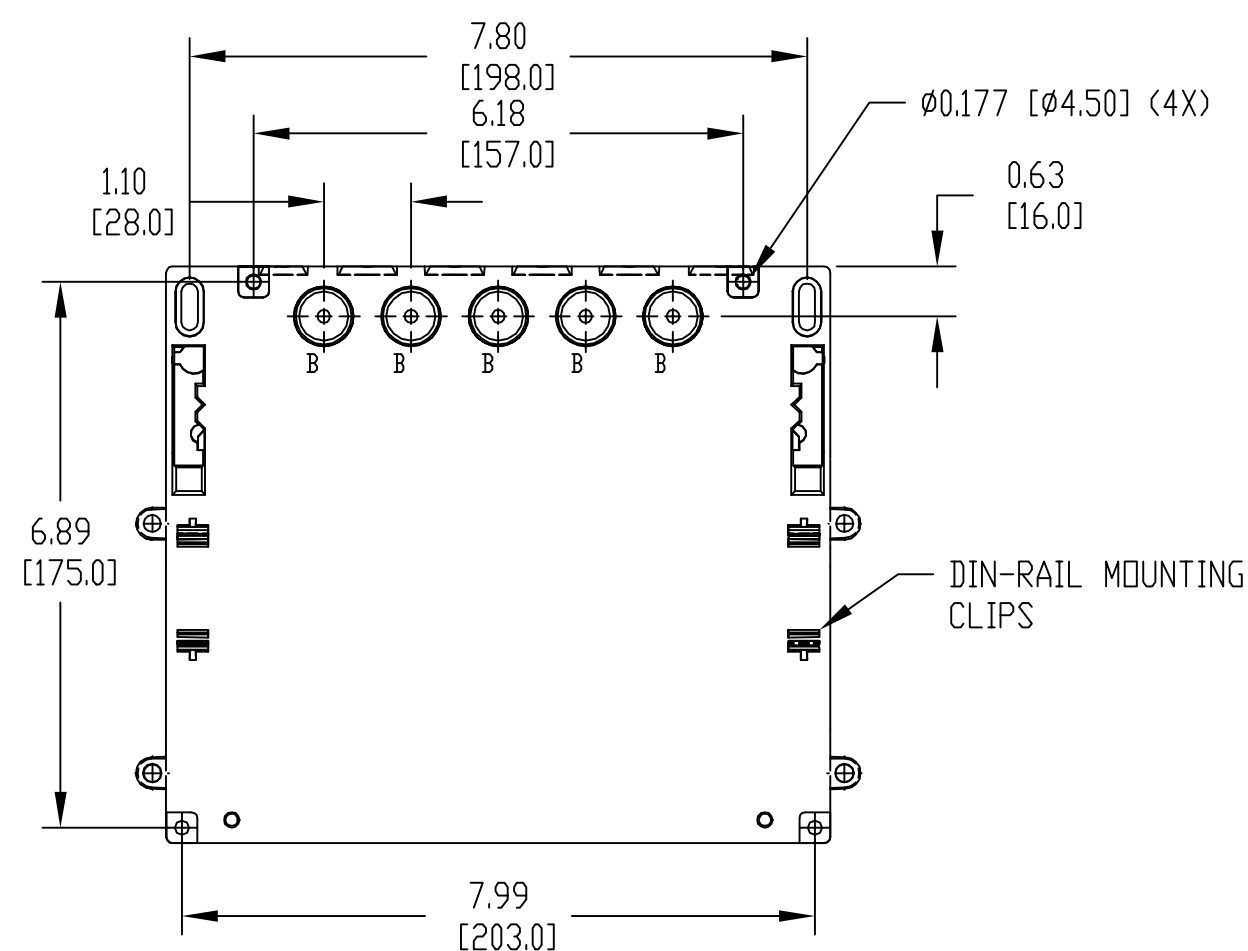
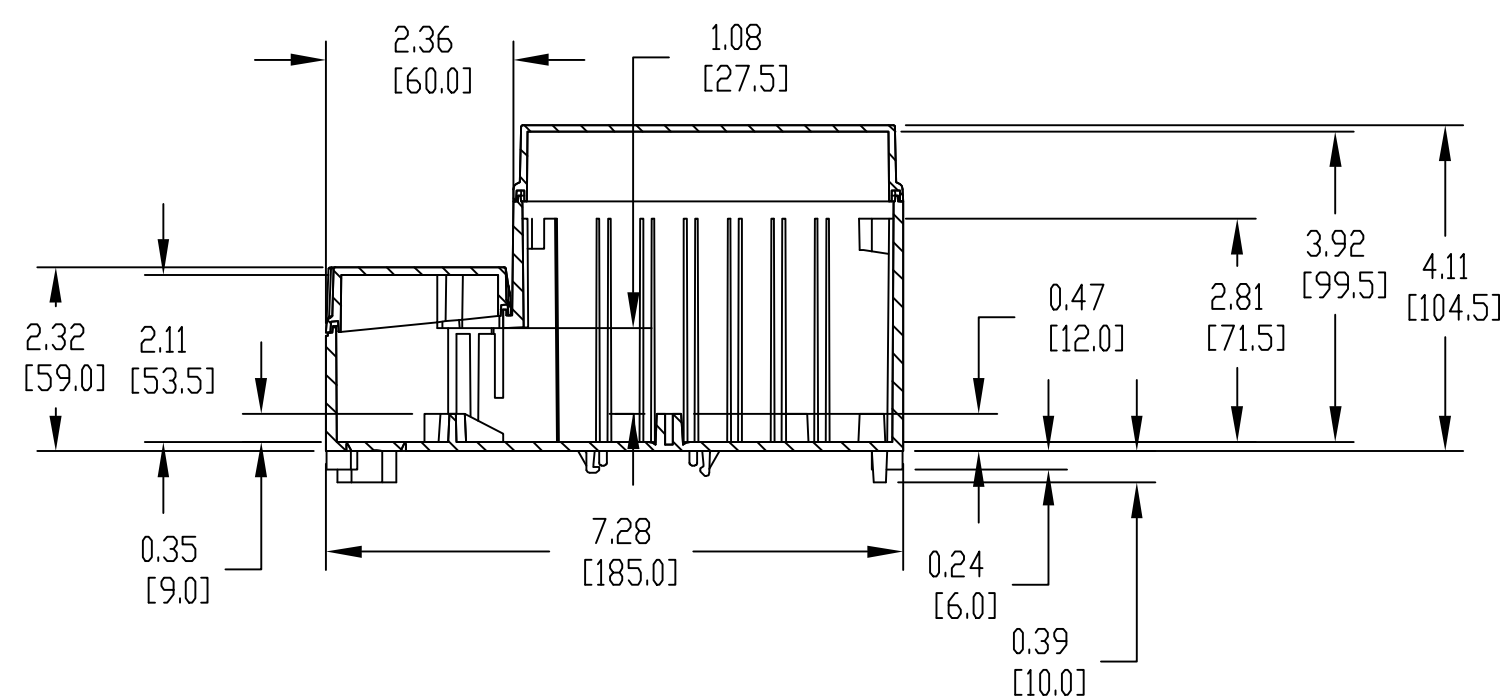
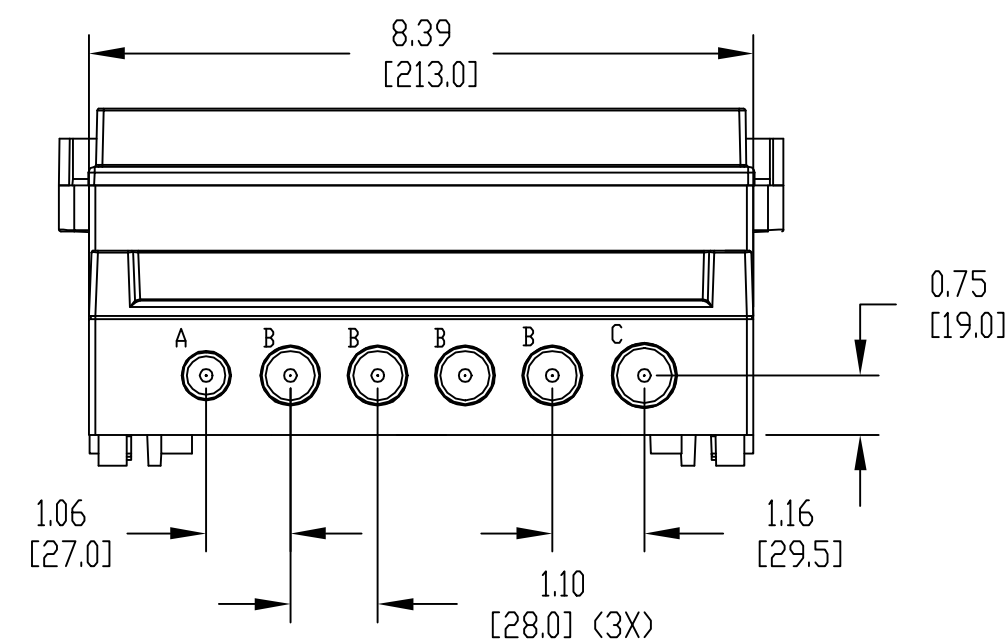
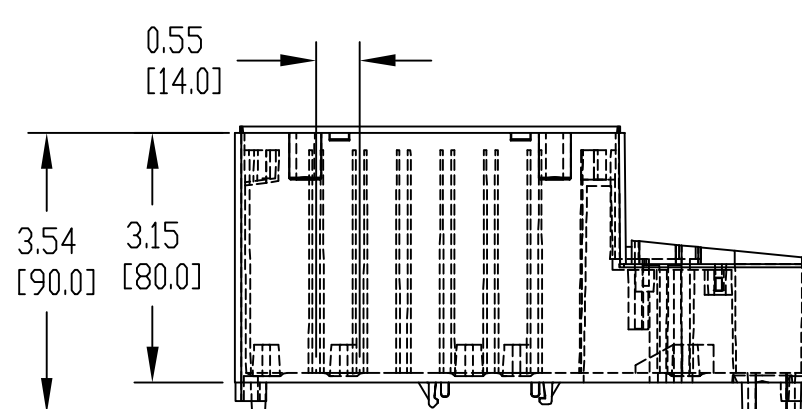


## MATERIAL:

BODY & TERMINAL COMPARTMENT COVER - LIGHT GRAY HIGH IMPACT ABS  
PCB COMPARTMENT COVER - BLUE TINTED POLYCARBONATE (UL 94-HB)

SILICONE SPONGE GASKET IN BOTH COVERS

SCREW-ON COVER DESIGNED TO MEET IP-66 RATING



	KNOCKOUT DIMENSION	CABLE GLAND
A	Ø0.614 [15.6mm]	PG 9(OR M12)
B	Ø0.748 [19.0mm]	PG 11(OR M16)
C	Ø0.819 [20.8mm]	PG 13.5(OR M20)

ALL DIMENSIONS HAVE ±0.02 [0.4] TOLERANCE UNLESS OTHERWISE SPECIFIED

# Mouser Electronics

Authorized Distributor

Click to View Pricing, Inventory, Delivery & Lifecycle Information:

[Bud Industries:](#)

[DCS-11902](#)