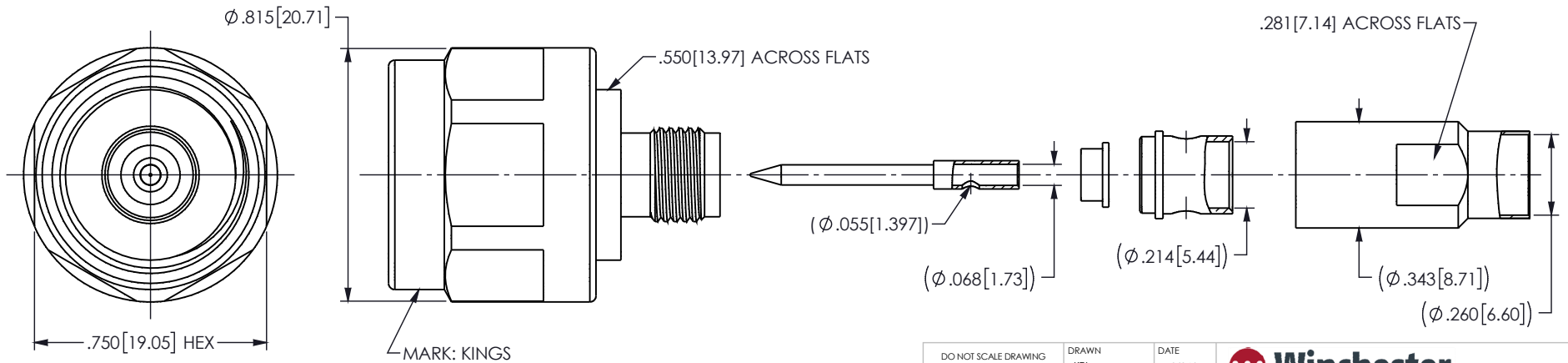
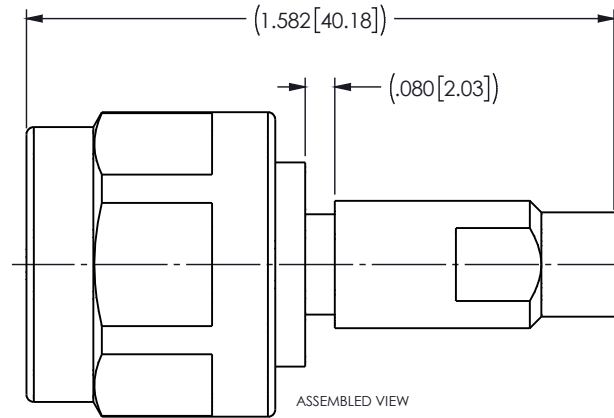


This document, including the design, configuration and mechanical features revealed herein are the sole, confidential and proprietary property of Winchester Interconnect. Reproduction or use thereof, in whole or part, is prohibited without the prior written consent of Winchester Interconnect.


NOTES: UNLESS OTHERWISE SPECIFIED

1. INTERFACE PER MIL-STD-348, SERIES N, PIN CONTACT.
2. MATERIAL SPECIFICATIONS:
 BODY, CLAMP BODY AND NUT: STAINLESS STEEL PER ASTM A582
 INSULATOR: TEFLON PER ASTM D1710
 GASKET: SILICONE RUBBER PER A-A-59588
 RETAINING RING: PHOSPHOR BRONZE PER ASTM B103
 REAR INSULATOR: PCPFE (KEL F)
 SOLDER SLEEVE, CENTER CONTACT: BRASS PER ASTM B16
3. FINISH SPECIFICATIONS:
 BODY & NUT & CLAMP BODY: PASSIVATE PER ASTM A967
 CENTER CONTACT: .000050 MIN GOLD PER ASTM B488 OVER
 .000050 MIN NICKEL PER AMS-QQ-N-290
 SOLDER SLEEVE: .000015 MIN GOLD PER ASTM B488 OVER .000080 MIN NICKEL PER AMS-QQ-N-290
4. ELECTRICAL SPECIFICATIONS:
 IMPEDANCE: 50 OHMS
 FREQUENCY RANGE: DC TO 18GHz
 VOLTAGE RATING: 1000 VOLTS RMS
 VSWR: 1.35 MAX (1 FOOT LONG CABLE ASSY)
5. CONTACT, REAR INSULATOR, CLAMP BODY, GASKET AND SOLDER SLEEVE SHIPPED LOOSE.
6. DESIGNED FOR USE WITH IW 2301 CABLE.
7. ASSEMBLE TO CABLE USING CABLING PROCEDURE CAP 6-07.
8. CONNECTOR MEETS REQUIREMENTS OF THE DEFENSE FEDERAL ACQUISITION REGULATION AS STATED IN CLAUSE 252.225-7014, ALTERNATIVE 1.

REV	DESCRIPTION	DATE	APPD
D	MARK UPDATE WITH KINGS PER ER055690	12/02/14	DCAM
E	ECO-12605	07/13/2020	LA



CATALOG P/N: 3395-600-W2301P

DO NOT SCALE DRAWING	DRAWN KPL	DATE 10/04/11	 Winchester Interconnect 245 Lynnfield St. Peabody, MA 01960
UNLESS OTHERWISE SPECIFIED: DIMENSIONS ARE IN INCHES	ENG APPR. DCAM	DATE 10/04/11	
	MFG APPR.	DATE	
	OTHER APPR.	DATE	
TOLERANCES: FRACTIONS: ±1/64 .XX: ±.01 .XXX: ±.005 ANGLES: ±1/2° MACHINED SURFACES: 63/	THIRD ANGLE PROJECTION		TITLE: 18 GHz STAIGHT CABLE PLUG SOLDER CLAMP ATTACHMENT (RoHS)(DFARS)
SIZE B		DWG. NO. SD3395-600-W2301P	REV E
PER ASME Y14.5M-1994		SCALE: 1:1	SHEET 1 OF 1

Mouser Electronics

Authorized Distributor

Click to View Pricing, Inventory, Delivery & Lifecycle Information:

[Winchester Interconnect:](#)

[3395-600-W2301P](#)