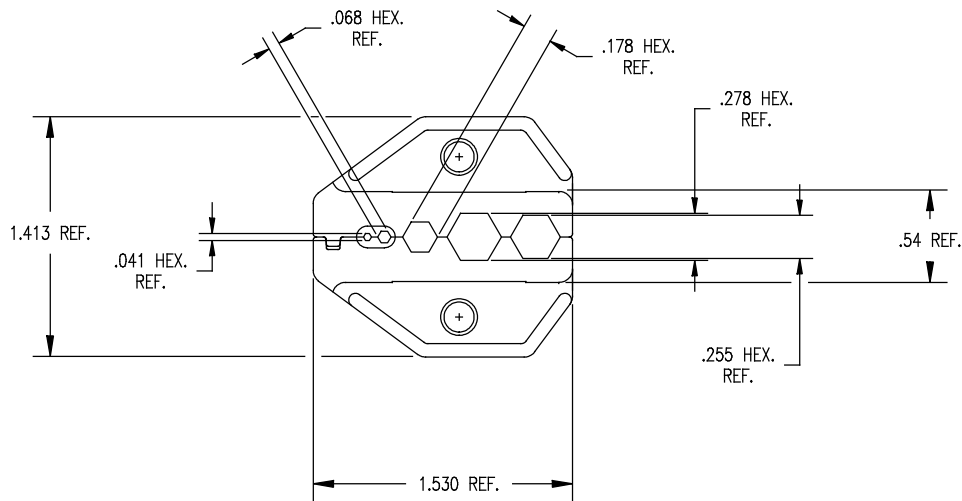
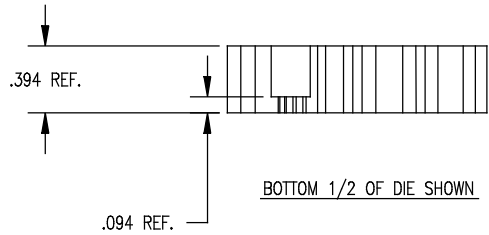


DASH NO.	M CODE	MADE FROM
----------	--------	-----------



NOTES:

- USE THE FOLLOWING CAVITIES FOR CABLES NOTED BELOW:
 - FOR BELDEN 1855A, 1865A, AND COMMSCOPE 7538 CABLE GROUPS, USE .041 AND .178 HEX. CAVITY.
 - FOR BELDEN 9209A, 1505A, 1506A, AND 8241 CABLE GROUPS, USE .041 AND .255 HEX. CAVITY.
 - FOR BELDEN 1694A, USE .041 AND .278 HEX. CAVITY.
- FINISH: BLACK OXIDE

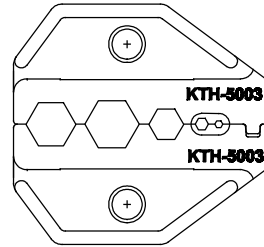
UNLESS OTHERWISE SPECIFIED

1. TOLERANCES: FRACTIONS & 2 PLACE DECIMALS $\pm .010$
 3 PLACE DECIMALS $\pm .004$ ANGLES $\pm 1^\circ$
 CONCENTRICITY OF ANY 2 DIAMETERS MAY NOT
 EXCEED HALF THE SUM OF THEIR TOLERANCES.

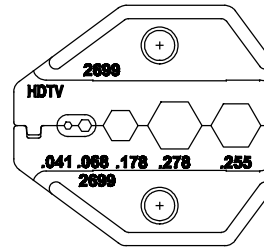
2. REMOVE ALL BURRS, BREAK SHARP EDGES .005 MAX.
 3. NO FILLETS PERMITTED.
 4. SURFACE ROUGHNESS 63 MICROINCHES RMS MAX.
 5. ALL DIMENSIONS PRIOR TO PLATING.
 6. ALL PLATING IN ACCORDANCE WITH KER 10004.

7. ALL LEAD THREADS TO BE
 CHAMFERED 45° TO ROOT DIAMETER.
 ★ CRITICAL DIMENSIONS

GSD



BACKSIDE MARKING



FRONTSIDE MARKING

GSD

KTH-5003

REVISIONS	
ISSUE	CHANGES
0	ER 39294 JLA 05/20/05
1	CN 39302 E JLA 07/20/05
KTH-5003	
KTH-5003	
SCALE 3 : 2	
APPROX SURFACE AREA N/A	
USED ON KTH-5000	
REF: KTH-5000	
CRIMP DIE	
DRAWN J. ALBRECHT	DATE 05/19/05
DESIGN J. ALBRECHT	DATE 05/20/05
APPR.	DATE
KINGS ELECTRONICS CO., INC. ROCK HILL, SOUTH CAROLINA 29730	
KTH-5003	

Mouser Electronics

Authorized Distributor

Click to View Pricing, Inventory, Delivery & Lifecycle Information:

[Winchester Interconnect:](#)

[KTH-5003](#)