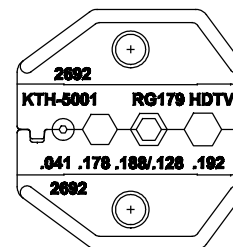
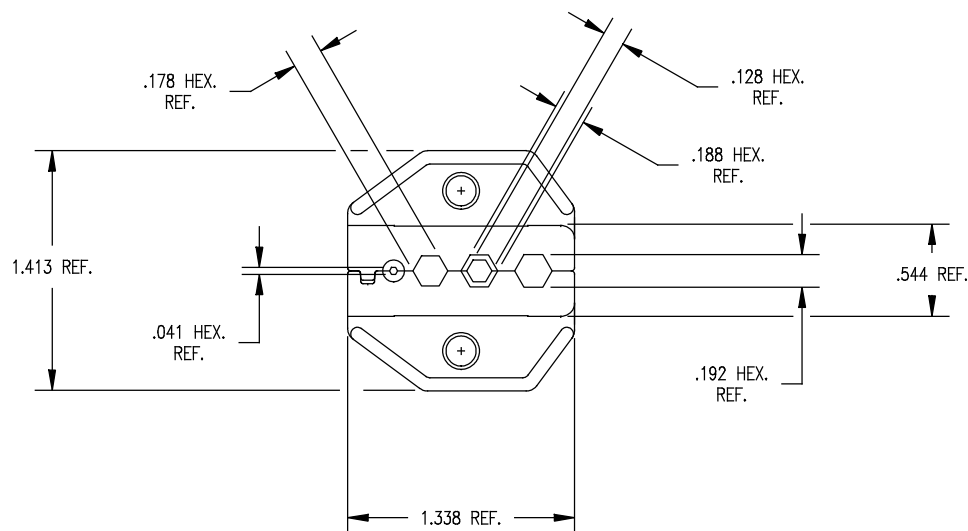
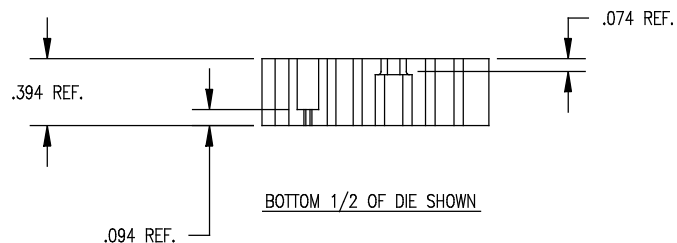


DASH NO.	M CODE	MADE FROM
----------	--------	-----------

GSD

KTH-5001



MARKING

NOTES:

- USE THE FOLLOWING CAVITIES FOR CABLES NOTED BELOW:
 - FOR RG-179 AND BELDEN 179DT, USE .188/.128 HEX. CAVITY
 - FOR BELDEN 1277 R & P, 1278 R & P, 1279 R & P, 1280 R & P, USE .192 CAVITY.
- FINISH: BLACK OXIDE

GSD

REVISIONS	
ISSUE	CHANGES
0	ER 39259 JPK 04/12/05
KTH-5001SD	
SCALE 3 : 2	
APPROX SURFACE AREA N/A	
USED ON KTH-5000	
REF: KTH-5000	
CRIMP DIE	
DRAWN J. KENNEDY	DATE 03/15/05
DESIGN D. TAYLOR	DATE
APPR.	DATE
KINGS ELECTRONIC CO., INC. ROCK HILL, SOUTH CAROLINA 29730	
KTH-5001	

Mouser Electronics

Authorized Distributor

Click to View Pricing, Inventory, Delivery & Lifecycle Information:

[Winchester Interconnect:](#)

[KTH-5001](#)