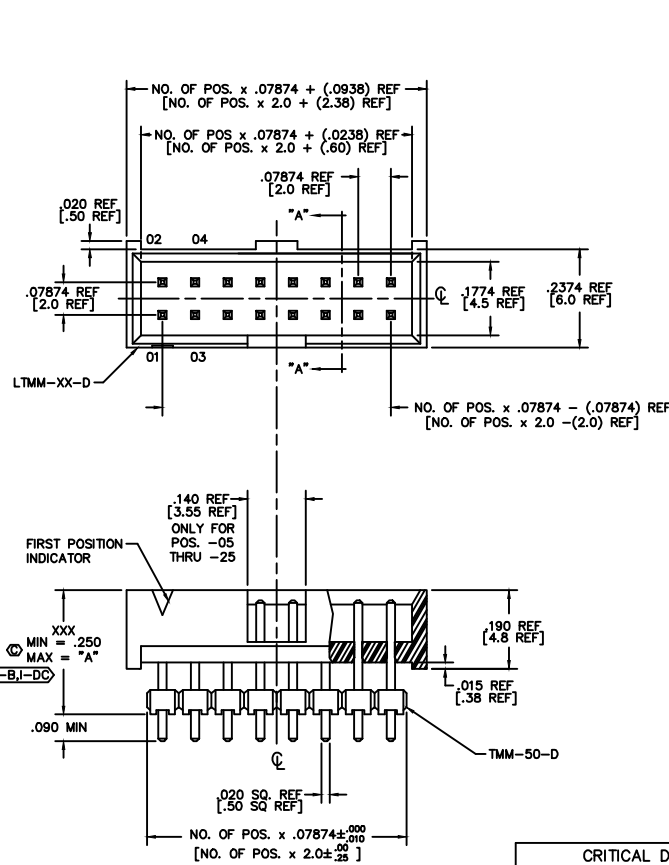


DO NOT SCALE FROM THIS PRINT



ZL TMM-1XX-XX-XX-D-XXX-XX

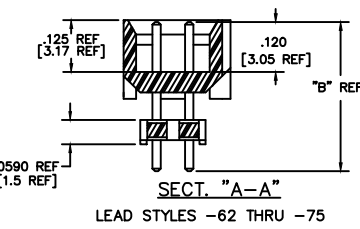
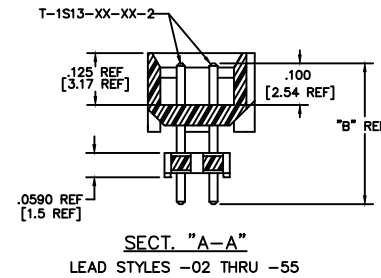
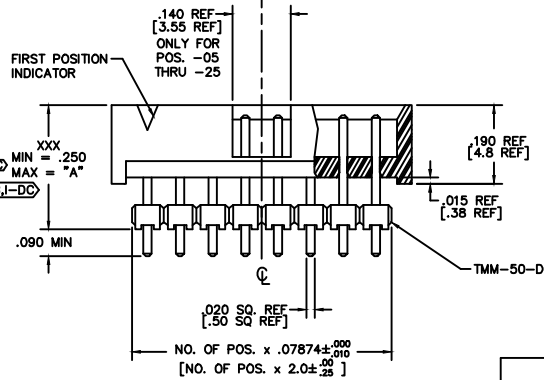
NO. OF POSITIONS
03 THRU 25

POLARIZED OPTION
XX = PIN NO. TO BE OMITTED

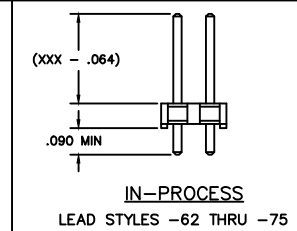
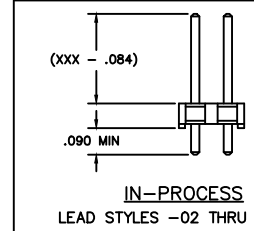
TERMINAL STYLE
LEAD STYLES -02 THRU -55:
.100 POST HEIGHT, LEAD STYLES
-62 THRU -75: .120 POST HEIGHT
(SEE TABLE 1)

ROW SPECIFICATION
-D: DOUBLE

PLATING SPECIFICATIONS
-G: 20µ" GOLD IN CONTACT AREA,
3µ" GOLD ON TAIL
-T: MATTE TIN CONTACT AND TAIL
-S: 30µ" SELECTIVE GOLD IN CONTACT AREA,
MATTE TIN ON TAIL
-H: 30µ" GOLD IN CONTACT AREA,
3µ" GOLD ON TAIL
-TM: MATTE TIN CONTACT AND TAIL
-LM: 10µ" SELECTIVE GOLD IN CONTACT AREA,
MATTE TIN ON TAIL
-FM: 3µ" SELECTIVE GOLD IN CONTACT AREA,
MATTE TIN ON TAIL
-SM: 30µ" SELECTIVE GOLD IN CONTACT AREA,
MATTE TIN ON TAIL
-L: 10µ" SELECTIVE GOLD IN CONTACT AREA,
MATTE TIN ON TAIL
-F: 3µ" SELECTIVE GOLD IN CONTACT AREA,
MATTE TIN ON TAIL



CRITICAL DIMENSION INSPECTION TABLE	
ASSEMBLY OPERATION	IN-PROCESS INSPECTION
MOUNT BODY	C1



- NOTES:
1. MAX PIN ROTATION IN BODY TO BE 2°.
 2. PUSHOUT FORCE TO BE 1 lb. MIN.
 3. Ⓞ REPRESENTS CRITICAL DIMENSION
 4. ALL DIMS APPEARING IN [] ARE IN MILLIMETERS.
 5. INSULATOR MATERIAL: LCP, UL 94 VO
 6. FOR ADDED MECHANICAL STABILITY, SAMTEC RECOMMENDS MECHANICAL BOARD SPACERS BE USED IN APPLICATIONS WITH GOLD OR SELECTIVE GOLD PLATED CONNECTORS. CONTACT IPG@SAMTEC.COM FOR MORE INFORMATION.

TABLE 1

LEAD STYLE	TERMINAL	"A"	"B"	LEAD STYLE	TERMINAL	"A"	"B"
-02	T-1S13-02-XX-2	.312 [7.92]	.377 [9.58]	-62	T-1S13-05-XX-2	.312 [7.92]	.397 [10.08]
-03	T-1S13-03-XX-2	.470 [11.94]	.535 [13.59]	-63	T-1S13-06-XX-2	.470 [11.94]	.555 [14.10]
-05	T-1S13-05-XX-2	.332 [8.43]	.397 [10.08]	-65	T-1S13-19-XX-2	.328 [8.33]	.413 [10.49]
-06	T-1S13-06-XX-2	.490 [12.45]	.555 [14.1]	-66	T-1S13-09-XX-2	.509 [12.93]	.594 [15.09]
-55	T-1S13-20-XX-2	.258 [6.55]	.323 [8.2]	-69	T-1S13-14-XX-2	.529 [13.44]	.614 [15.60]
-09	T-1S13-09-XX-2	.529 [13.4]	.594 [15.1]	-70	T-1S13-17-XX-2	.608 [15.44]	.693 [17.60]
-10	T-1S13-10-XX-2	.608 [15.4]	.673 [17.1]	-71	T-1S13-12-XX-2	.745 [18.92]	.830 [21.08]
-11	T-1S13-11-XX-2	.686 [17.4]	.751 [19.1]	-72	T-1S13-18-XX-2	.766 [19.45]	.851 [21.62]
-12	T-1S13-12-XX-2	.765 [19.4]	.830 [21.1]	-73	T-1S13-08-XX-2	.391 [9.93]	.476 [12.09]
-13	T-1S13-13-XX-2	.391 [9.9]	.456 [11.6]	-74	T-1S13-10-XX-2	.588 [14.93]	.673 [17.09]
-14	T-1S13-14-XX-2	.549 [13.9]	.614 [15.6]	-75	T-1S13-02-XX-2	.292 [7.42]	.377 [9.58]

PROPRIETARY NOTE
THIS DOCUMENT CONTAINS INFORMATION CONFIDENTIAL AND PROPRIETARY TO SAMTEC INC. AND SHALL NOT BE REPRODUCED OR TRANSMITTED TO OTHER DOCUMENTS OR DISCLOSED TO OTHERS OR USED FOR ANY PURPOSE OTHER THAN THAT FOR WHICH IT WAS OBTAINED WITHOUT THE EXPRESSED WRITTEN CONSENT OF SAMTEC INC.

EXISPROD/ASSEMBLY/2MM
ZL TMM ASM

samtec

520 PARK EAST BLVD. NEW ALBANY, INDIANA 47150
PHONE (812) 944-6733 P.O. BOX 1147
CODE 55322

MADE BY: BRYANT 7-9-92
CHECKED BY: ECKERT

ENGINEER APPROVAL
DEM

ZL TMM-1XX-XX-XX-D-XXX-XX
SHEET 1 OF 1

Mouser Electronics

Authorized Distributor

Click to View Pricing, Inventory, Delivery & Lifecycle Information:

[Samtec:](#)

[ZLTMM-118-70-T-D-500](#) [ZLTMM-110-74-F-D-434](#) [ZLTMM-122-63-L-D-250](#) [ZLTMM-117-63-T-D-458](#) [ZLTMM-118-72-T-D-766](#) [ZLTMM-106-74-F-D-538](#) [ZLTMM-125-62-S-D-307](#) [ZLTMM-110-73-T-D-376](#) [ZLTMM-108-74-F-D-538](#) [ZLTMM-105-73-F-D-376](#) [ZLTMM-104-70-T-D-608](#) [ZLTMM-106-66-L-D-290](#) [ZLTMM-104-55-T-D-250](#) [ZLTMM-104-63-T-D-400](#) [ZLTMM-108-71-F-D-695](#) [ZLTMM-125-70-L-D-600](#) [ZLTMM-110-63-F-D-365](#) [ZLTMM-112-65-T-D-250](#) [ZLTMM-106-65-T-D-291](#) [ZLTMM-115-74-L-D-538](#) [ZLTMM-104-72-S-D-766](#) [ZLTMM-125-75-T-D-279](#) [ZLTMM-125-73-F-D-382](#) [ZLTMM-115-65-F-D-309](#) [ZLTMM-105-74-F-D-575](#) [ZLTMM-108-73-F-D-341](#) [ZLTMM-106-73-F-D-389](#) [ZLTMM-104-11-L-D-670](#) [ZLTMM-104-73-T-D-391](#) [ZLTMM-108-74-F-D-565](#) [ZLTMM-105-71-F-D-565](#) [ZLTMM-116-66-L-D-509](#) [ZLTMM-104-63-T-D-469-01](#) [ZLTMM-108-71-F-D-700](#) [ZLTMM-108-73-L-D-355](#) [ZLTMM-105-74-F-D-538](#) [ZLTMM-104-66-F-D-500](#) [ZLTMM-112-71-F-D-665](#) [ZLTMM-110-71-L-D-445](#) [ZLTMM-104-71-F-D-700](#) [ZLTMM-107-63-S-D-470](#) [ZLTMM-104-73-G-D-345](#) [ZLTMM-115-70-L-D-608](#) [ZLTMM-115-74-G-D-544](#) [ZLTMM-105-71-L-D-560](#) [ZLTMM-105-70-F-D-585](#) [ZLTMM-110-66-L-D-473](#) [ZLTMM-115-63-F-D-365](#) [ZLTMM-125-65-F-D-323](#) [ZLTMM-113-03-S-D-376](#) [ZLTMM-104-63-L-D-425](#) [ZLTMM-104-55-T-D-258](#) [ZLTMM-105-63-F-D-415](#) [ZLTMM-110-72-L-D-750](#) [ZLTMM-125-72-F-D-713](#) [ZLTMM-125-70-F-D-573](#) [ZLTMM-110-73-F-D-355](#) [ZLTMM-110-66-L-D-474](#) [ZLTMM-125-74-F-D-529](#) [ZLTMM-115-63-L-D-378](#) [ZLTMM-104-71-F-D-565](#) [ZLTMM-107-71-S-D-740](#) [ZLTMM-112-66-L-D-390](#) [ZLTMM-108-62-T-D-250-13](#) [ZLTMM-125-65-L-D-324-36](#) [ZLTMM-113-63-S-D-453](#) [ZLTMM-108-71-F-D-565](#) [ZLTMM-106-63-F-D-445](#) [ZLTMM-108-73-S-D-390](#) [ZLTMM-105-71-F-D-700](#) [ZLTMM-105-63-T-D-458](#) [ZLTMM-115-72-T-D-708](#) [ZLTMM-106-62-L-D-270](#) [ZLTMM-112-63-L-D-390](#) [ZLTMM-115-72-L-D-722](#) [ZLTMM-115-72-L-D-708](#) [ZLTMM-104-71-F-D-675](#) [ZLTMM-105-72-F-D-663](#) [ZLTMM-106-73-T-D-391](#) [ZLTMM-115-71-L-D-689](#) [ZLTMM-117-70-S-D-583-13](#) [ZLTMM-118-72-T-D-608](#) [ZLTMM-110-70-S-D-583-16](#) [ZLTMM-115-73-F-D-338](#) [ZLTMM-114-71-G-D-637](#) [ZLTMM-120-63-F-D-402](#) [ZLTMM-125-71-F-D-713](#) [ZLTMM-115-62-F-D-298](#) [ZLTMM-115-73-G-D-362](#) [ZLTMM-108-74-F-D-575](#) [ZLTMM-115-74-L-D-580](#) [ZLTMM-108-73-F-D-378](#) [ZLTMM-106-65-F-D-291](#) [ZLTMM-125-62-L-D-260](#) [ZLTMM-108-55-T-D-250](#) [ZLTMM-120-69-F-D-315](#) [ZLTMM-106-70-G-D-518](#) [ZLTMM-108-65-F-D-312](#) [ZLTMM-113-69-L-D-525](#) [ZLTMM-108-55-T-D-258](#)