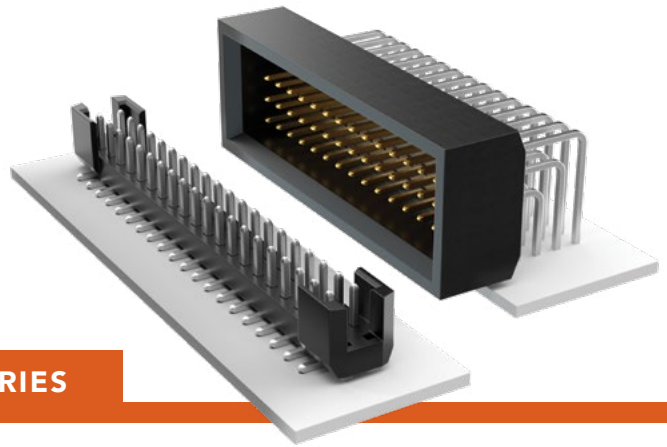


# SHROUDED HEADERS

(2.00 mm) .0787" PITCH • TSH/TMMS SERIES



## TSH

### Mates:

CLT, SQT, SQW, ESQT,  
TLE, SMM, MMS, PTF

## TMMS

### Mates:

SQT, SQW, ESQT

TSH	-	1	NO. PINS PER ROW	-	01	PLATING OPTION	-	ROW OPTION	-	OTHER OPTION
-----	---	---	------------------	---	----	----------------	---	------------	---	--------------

05, 10, 15, 20, 25,  
30, 35, 40, 45  
(40 & 45 = -D & -RA only)  
(Standard sizes)

**-F**  
= Gold flash on post, Matte Tin on tail

**-D**  
= Vertical Through-hole

**-LC**  
= Locking Clip (-DV only)  
(Not available with -A)  
(Manual placement required)

**-L**  
= 10 μ" (0.25 μm) Gold on post, Matte Tin on tail

**-DV**  
= Vertical Surface Mount

**-A**  
= Alignment Pin (-DV only)  
(Not available with -LC)

**-RA**  
= Right-angle Through-hole

**-SL**  
= Solder Locks (-DH only)

**-T**  
= Matte Tin

**-DH**  
= Horizontal Surface Mount

**-K**  
= (4.50 mm) .177" DIA Polyimide Film Pick & Place Pad (-DH only)  
(Not available with 15 - 30 positions)

**-TR**  
= Tape & Reel

**-FR**  
= Full Reel Tape & Reel (must order max. quantity per reel; contact Samtec for quantity breaks)

## SPECIFICATIONS

### Insulator Material:

Black Liquid Crystal Polymer

### Terminal Material:

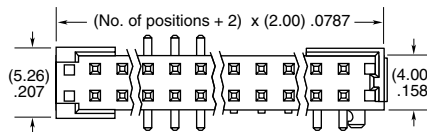
Phosphor Bronze

### Plating:

Sn or Au over 50 μ" (1.27 μm) Ni

### Operating Temp Range:

-55 °C to +105 °C with Tin;  
-55 °C to +125 °C with Gold



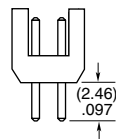
## PROCESSING

### Lead-Free Solderable:

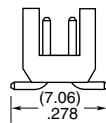
Yes

### SMT Lead Coplanarity (TSH):

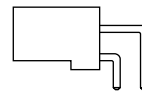
(0.15 mm) .006" max\*  
\*(.004" stencil solution may be available; contact IPG@samtec.com)



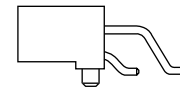
**-D**



**-DV**



**-RA**



**-DH**

TMMS	-	1	NO. PINS PER ROW	-	01	PLATING OPTION	-	Q	-	OPTION	-	FS
------	---	---	------------------	---	----	----------------	---	---	---	--------	---	----

05, 10, 15,  
20, 30, 40, 50

**-F**  
= Gold flash on post, Matte Tin on tail

**-RA**  
= Right-angle

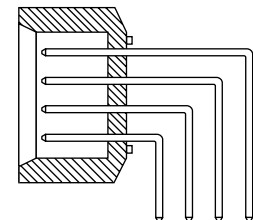
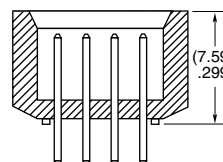
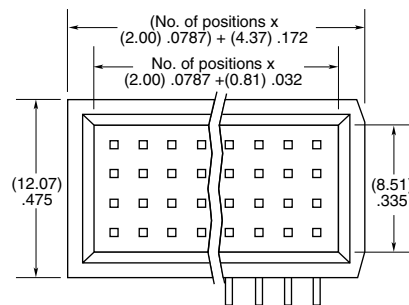
**-L**  
= 10 μ" (0.25 μm) Gold on post, Matte Tin on tail

## ALSO AVAILABLE

MOQ Required

Other sizes

Other plating



**-RA**

### Note:

Some lengths, styles and options are non-standard, non-returnable.

# Mouser Electronics

Authorized Distributor

Click to View Pricing, Inventory, Delivery & Lifecycle Information:

[Samtec:](#)

[TSH-115-01-F-RA-SL](#)