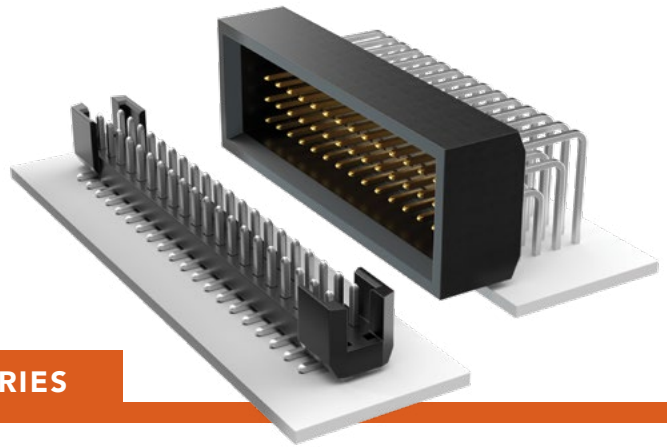


SHROUDED HEADERS

(2.00 mm) .0787" PITCH • TSH/TMMS SERIES



TSH

Mates:

CLT, SQT, SQW, ESQT,
TLE, SMM, MMS, PTF

TMMS

Mates:

SQT, SQW, ESQT

TSH	-	1	NO. PINS PER ROW	-	01	PLATING OPTION	-	ROW OPTION	-	OTHER OPTION
-----	---	---	------------------	---	----	----------------	---	------------	---	--------------

05, 10, 15, 20, 25,
30, 35, 40, 45
(40 & 45 = -D & -RA only)
(Standard sizes)

-F
= Gold flash on post, Matte Tin on tail

-D
= Vertical Through-hole

-LC
= Locking Clip (-DV only)
(Not available with -A)
(Manual placement required)

-L
= 10 μ" (0.25 μm) Gold on post, Matte Tin on tail

-DV
= Vertical Surface Mount

-A
= Alignment Pin (-DV only)
(Not available with -LC)

-RA
= Right-angle Through-hole

-SL
= Solder Locks (-DH only)

-T
= Matte Tin

-DH
= Horizontal Surface Mount

-K
= (4.50 mm) .177" DIA Polyimide Film Pick & Place Pad (-DH only)
(Not available with 15 - 30 positions)

-TR
= Tape & Reel

-FR
= Full Reel Tape & Reel (must order max. quantity per reel; contact Samtec for quantity breaks)

SPECIFICATIONS

Insulator Material:

Black Liquid Crystal Polymer

Terminal Material:

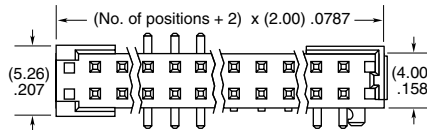
Phosphor Bronze

Plating:

Sn or Au over 50 μ" (1.27 μm) Ni

Operating Temp Range:

-55 °C to +105 °C with Tin;
-55 °C to +125 °C with Gold



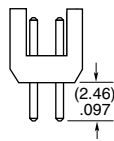
PROCESSING

Lead-Free Solderable:

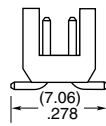
Yes

SMT Lead Coplanarity (TSH):

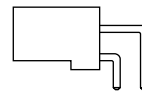
(0.15 mm) .006" max*
*(.004" stencil solution may be available; contact IPG@samtec.com)



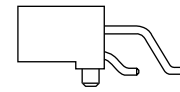
-D



-DV



-RA



-DH

TMMS	-	1	NO. PINS PER ROW	-	01	PLATING OPTION	-	Q	-	OPTION	-	FS
------	---	---	------------------	---	----	----------------	---	---	---	--------	---	----

05, 10, 15,
20, 30, 40, 50

-F
= Gold flash on post, Matte Tin on tail

-RA
= Right-angle

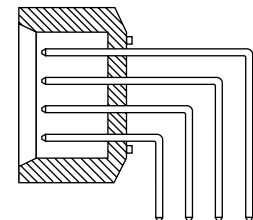
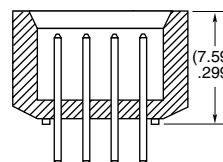
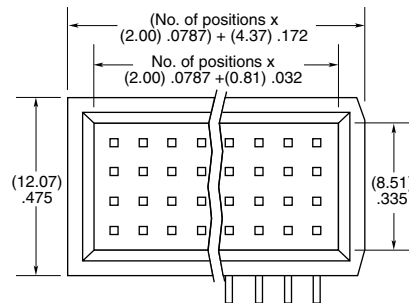
-L
= 10 μ" (0.25 μm) Gold on post, Matte Tin on tail

ALSO AVAILABLE

MOQ Required

Other sizes

Other plating



-RA

Note:

Some lengths, styles and options are non-standard, non-returnable.

Mouser Electronics

Authorized Distributor

Click to View Pricing, Inventory, Delivery & Lifecycle Information:

[Samtec:](#)

[TSH-115-05-G-D](#)