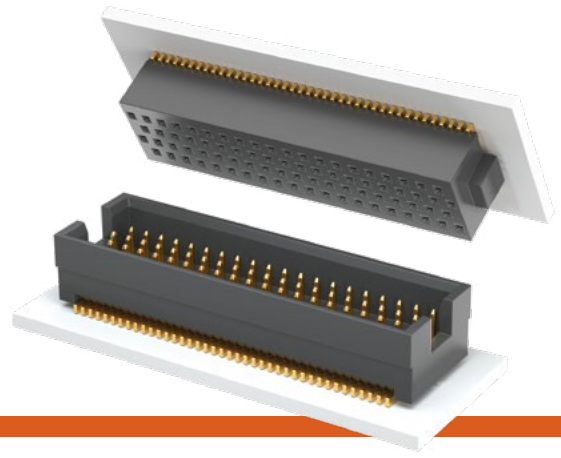


QUAD ROW SMT TERMINAL & SOCKET

(1.27 mm) .050" PITCH • TOLC/SOLC SERIES



TOLC
Mates:
SOLC

SOLC
Mates:
TOLC

SPECIFICATIONS

Insulator Material:
Black Liquid Crystal Polymer
Contact Material:
Phosphor Bronze
Plating:
Au over 50 μ" (1.27 μm) Ni
Current Rating:
2.4 A per pin
(6 adjacent pins powered)
Operating Temp Range:
-55 °C to +125 °C
Insertion Depth (SOLC):
(1.68 mm) .066" to
(3.61 mm) .142" with
(0.38 mm) .015" wipe
Normal Force (SOLC):
75 grams (0.74 N) average
Max Cycles (SOLC):
100+

PROCESSING

Lead-Free Solderable:
Yes
SMT Lead Coplanarity:
(0.10 mm) .004" max (05-35)
(0.15 mm) .006" max (40-50)*
*(.004" stencil solution
may be available; contact
IPG@samtec.com)

ALSO AVAILABLE
MOQ Required

Other sizes
Other platings

Note:
Some lengths, styles and
options are non-standard,
non-returnable.

TOLC	1	NO. PINS PER ROW	LEAD STYLE	PLATING OPTION	Q	OTHER OPTION
-------------	----------	-------------------------	-------------------	-----------------------	----------	---------------------

05, 10, 15, 20, 25,
30, 35, 40, 45, 50
(Standard Sizes)

Specify
LEAD
STYLE
from
chart

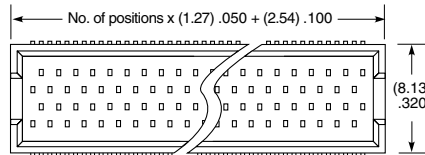
-F
= Gold flash
on contact,
Gold flash
on tail

-L
= 10 μ"
(0.25 μm)
Gold on
contact,
Gold flash
on tail

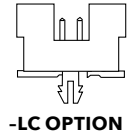
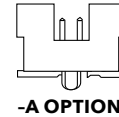
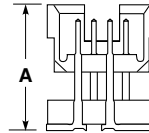
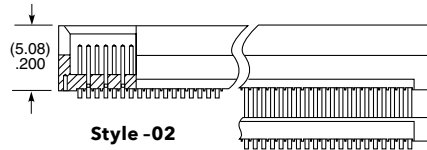
-A
= Alignment Pin
(N/A with -LC)

-LC
= Locking Clip
(N/A with -A)
(Manual
placement required)

-K
= (9.00 mm) .354" DIA
Polyimide film
Pick & Place Pad



LEAD STYLE	A	MATED HEIGHT
-02	(5.59) .220	(6.35) .250
-12	(7.24) .285	(8.00) .315
-22	(9.25) .364	(10.00) .394
-32	(11.23) .442	(12.00) .472



SOLC	1	NO. PINS PER ROW	02	PLATING OPTION	Q	OTHER OPTION
-------------	----------	-------------------------	-----------	-----------------------	----------	---------------------

05, 10, 15, 20, 25,
30, 35, 40, 45, 50
(Standard Sizes)

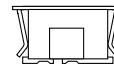
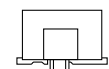
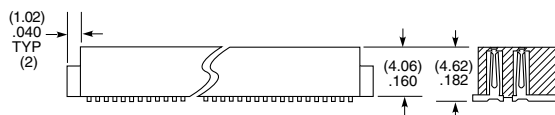
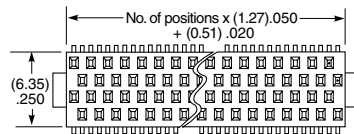
-F
= Gold flash
on contact,
Gold flash
on tail

-L
= 10 μ" (0.25 μm)
Gold on contact,
Gold flash
on tail

-A
= Alignment Pin
(N/A with -LC)

-LC
= Locking Clip
(N/A with -A)
(Manual
placement required)

-K
= (7.00 mm) .276" DIA
Polyimide film
Pick & Place Pad



-P
= Pick & Place Pad

-TR
= Tape & Reel

-FR
= Full Reel Tape & Reel
(must order max.
quantity per reel;
contact Samtec for
quantity breaks)

Mouser Electronics

Authorized Distributor

Click to View Pricing, Inventory, Delivery & Lifecycle Information:

[Samtec:](#)

[TOLC-150-32-S-Q-A](#)