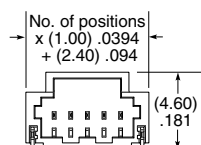
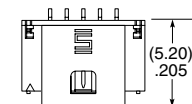
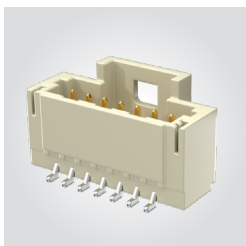


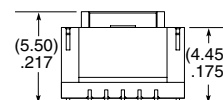
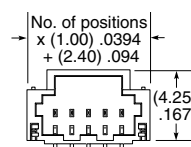
(1.00 mm) .0394" PITCH • DISCRETE WIRE TERMINAL STRIP

SERIES	NO. OF POSITIONS	PLATING OPTION	ROW OPTION	LATCH	OPTIONS	"X"R
T1M	-02, -03, -05, -07, -10, -15, -20	-F = 3 μ " (0.07 μ m) Gold on contact, Matte Tin on tail	-SH = Single Row Horizontal -SV = Single Row Vertical	(Required in callout) -L = Positive Latch	-K = (4.00 mm) .157" DIA Polyimide Film Pick & Place Pad (-SH only) -P = Pick & Place Pad (-SV only)	(Leave blank for Tape & Reel) -FR = Full Reel Tape & Reel (must order max. quantity per reel; contact Samtec for quantity breaks)

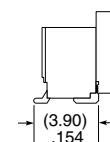
T1M-SH/SV
Cable Mates:
S1SS(T)



-SH



-SV

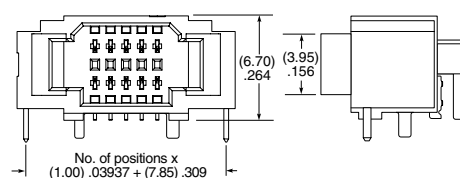
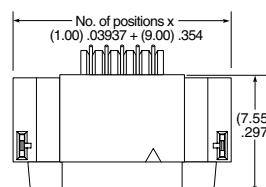
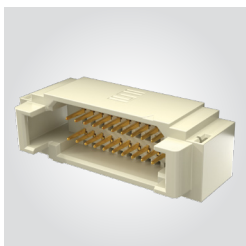
**SPECIFICATIONS**

Insulator Material:
Natural LCP
Terminal Material:
Phosphor Bronze
Plating: Sn or Au over
50 μ " (1.27 μ m) Ni
Operating Temp Range:
-55 °C to +125 °C
(Component only)
Current Rating (T1M/S1SS(T)):
2.2 A per pin
(3 adjacent pins powered)
Voltage Rating:
250 VAC/354 VDC

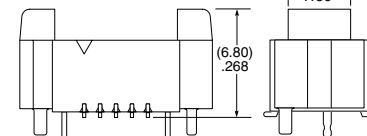
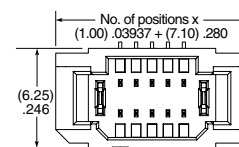
View complete specifications at: samtec.com?T1M

SERIES	NO. OF POSITIONS	PLATING OPTION	ROW OPTION	OPTION	"X"R
T1M	-02, -03, -04, -05, -10, -15, -20 (Per Row)	-GF = 3 μ " (0.07 μ m) Gold contact and tail	-DH = Double Row Horizontal -DV = Double Row Vertical	-K = (4.00 mm) .157" DIA Polyimide Film Pick & Place Pad (-DV only)	(Leave blank for Tape & Reel) -FR = Full Reel Tape & Reel (must order max. quantity per reel; contact Samtec for quantity breaks)

T1M-DH/DV
Cable Mates:
S1SD(T)



-DH



-DV

SPECIFICATIONS

Insulator Material:
Natural LCP
Terminal Material:
Phosphor Bronze
Plating: Sn or Au over
50 μ " (1.27 μ m) Ni
Operating Temp Range:
-55 °C to +125 °C
(Component only)
Current Rating (T1M/S1SD):
2.5 A per pin
(2 pins powered)
Voltage Rating: 250 VAC/354 VDC

View complete specifications at: samtec.com?T1M

Note:
Some lengths, styles and options
are non-standard, non-returnable.

Mouser Electronics

Authorized Distributor

Click to View Pricing, Inventory, Delivery & Lifecycle Information:

[Samtec:](#)

[T1M-03-GF-DV-K](#) [T1M-10-F-SV-L](#) [T1M-10-F-SV-L-P](#) [T1M-20-F-SH-L-K](#) [T1M-02-F-SV-L-P](#) [T1M-10-F-SH-L](#) [T1M-05-F-SV-L-P](#) [T1M-03-F-SV-L-P](#) [T1M-20-F-SH-L](#) [T1M-07-F-SV-L-P](#) [T1M-05-F-SH-L](#) [T1M-10-GF-DV-K](#) [T1M-10-GF-DV](#) [T1M-05-GF-DH](#) [T1M-06-F-SH-L](#) [T1M-06-F-SV-L](#) [T1M-04-F-SV-L-P](#) [T1M-15-F-SH-L-K](#) [T1M-04-F-SH-L](#) [T1M-20-F-SV-L](#) [T1M-02-F-SV-L](#) [T1M-07-F-SH-L-K](#) [T1M-03-F-SH-L](#) [T1M-07-F-SH-L](#) [T1M-05-GF-DV](#) [T1M-14-F-SV-L-P](#) [T1M-09-GF-S-V-TR](#) [T1M-12-GF-S-V-TR](#) [T1M-06-GF-S-V-TR](#) [T1M-09-GF-S-V-K-TR](#) [T1M-12-GF-S-V-K-TR](#) [T1M-16-GF-S-V-K-TR](#) [T1M-18-GF-S-V-K-TR](#) [T1M-08-F-SV-L-P](#) [T1M-15-F-SV-L-P](#) [T1M-06-GF-DV](#) [T1M-08-F-SH-L](#) [T1M-08-GF-DV-K](#) [T1M-15-F-SV-L](#) [T1M-04-GF-DH](#) [T1M-05-GF-DV-K](#) [T1M-07-GF-DH](#) [T1M-07-GF-DV-K](#) [T1M-04-F-SV-L](#) [T1M-04-GF-DV](#) [T1M-06-GF-DH](#) [T1M-16-F-SH-L-K](#) [T1M-09-F-SH-L](#) [T1M-08-F-SV-L](#) [T1M-08-GF-DV](#) [T1M-18-F-SV-L](#) [T1M-20-F-SV-L-P](#) [T1M-04-F-SH-L-K](#) [T1M-16-F-SV-L-P](#) [T1M-03-GF-DV](#) [T1M-04-GF-DV-K](#) [T1M-06-GF-DV-K](#) [T1M-10-GF-S-V-K-TR](#) [T1M-05-GF-S-V-K-TR](#) [T1M-02-GF-S-V-TR](#) [T1M-05-GF-S-V-TR](#) [T1M-15-GF-S-V-K-TR](#) [T1M-15-GF-S-V-TR](#) [T1M-20-GF-S-V-K-TR](#) [T1M-10-T-S-V-K-TR](#) [T1M-07-T-S-V-TR](#) [T1M-05-F-SV-L-K](#) [T1M-09-GF-DV](#) [T1M-09-GF-DV-K](#) [T1M-04-GF-S-V-K-TR](#) [T1M-04-GF-S-V-TR](#) [T1M-07-GF-S-V-K-TR](#) [T1M-08-F-SV-L-P-FR](#) [T1M-15-GF-DV](#) [T1M-05-GF-DV-K-FR](#) [T1M-13-GF-DV](#) [T1M-04-GF-S-V-FR](#) [T1M-13-F-SH-L](#) [T1M-18-S-S-V-K-TR](#) [T1M-15-GF-DH-FR](#) [T1M-04-GF-DV-K-FR](#) [T1M-14-GF-S-V-FR](#) [T1M-04-F-SV-L-P-FR](#) [T1M-20-S-S-V-K-TR](#) [T1M-10-GF-DV-K-FR](#) [T1M-13-F-SH-L-K](#) [T1M-18-F-SH-L-K-FR](#) [T1M-14-F-SV-L-P-FR](#) [T1M-17-F-SH-L-FR](#) [T1M-10-F-SV-L-P-FR](#) [T1M-02-S-S-V-TR](#) [T1M-10-GF-S-V-K-FR](#) [T1M-04-F-SH-L-K-FR](#) [T1M-06-F-SV-L-P-FR](#) [T1M-11-F-SH-L-K](#) [T1M-15-F-SV-L-P-FR](#) [T1M-08-GF-DV-K-FR](#) [T1M-03-GF-DV-K-FR](#) [T1M-03-F-SH-L-K-FR](#) [T1M-05-S-S-V-TR](#)