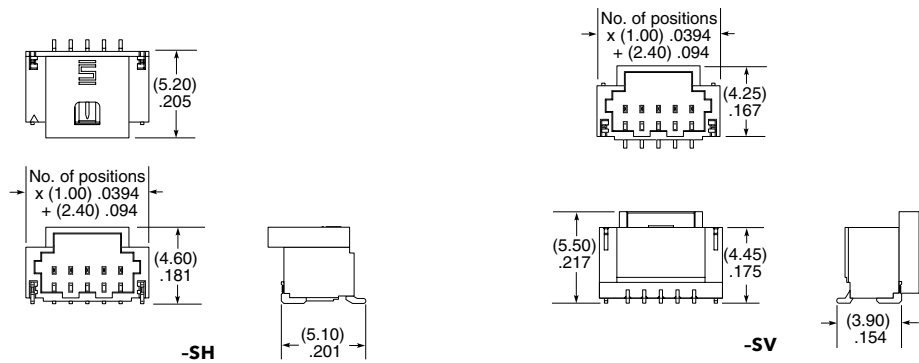
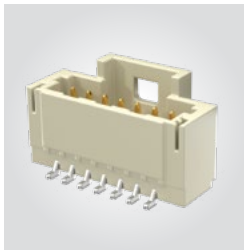


## (1.00 mm) .0394" PITCH • DISCRETE WIRE TERMINAL STRIP

SERIES	NO. OF POSITIONS	PLATING OPTION	ROW OPTION	LATCH	OPTIONS	"X"R
T1M	-02, -03, -05, -07, -10, -15, -20	-F = 3 μ" (0.07 μm) Gold on contact, Matte Tin on tail	-SH = Single Row Horizontal  -SV = Single Row Vertical	(Required in callout)  -L = Positive Latch	-K = (4.00 mm) .157" DIA Polyimide Film Pick & Place Pad (-SH only)  -P = Pick & Place Pad (-SV only)	(Leave blank for Tape & Reel)  -FR = Full Reel Tape & Reel (must order max. quantity per reel; contact Samtec for quantity breaks)

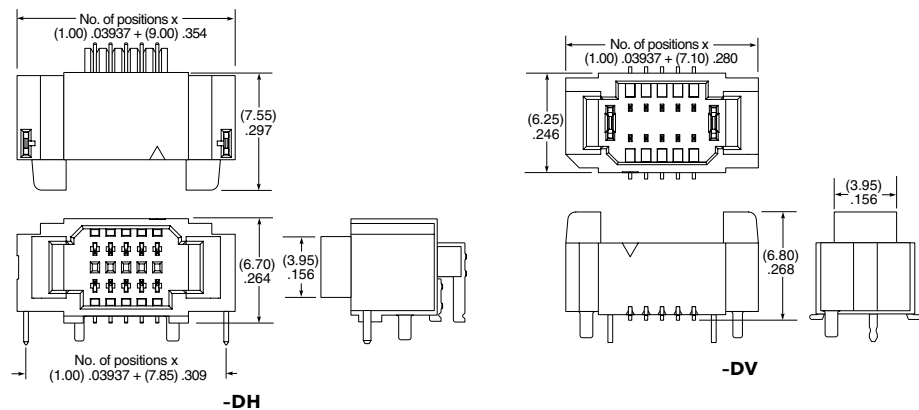
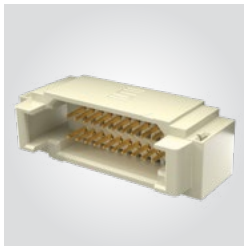
### T1M-SH/SV Cable Mates: S1SS(T), S1SD(T)



View complete specifications at: [samtec.com?T1M](http://samtec.com?T1M)

SERIES	NO. OF POSITIONS	PLATING OPTION	ROW OPTION	OPTION	"X"R
T1M	-02, -03, -04, -05, -10, -15, -20 (Per Row)	-GF = 3 μ" (0.07 μm) Gold contact and tail	-DH = Double Row Horizontal  -DV = Double Row Vertical	-K = (4.00 mm) .157" DIA Polyimide Film Pick & Place Pad (-DV only)	(Leave blank for Tape & Reel)  -FR = Full Reel Tape & Reel (must order max. quantity per reel; contact Samtec for quantity breaks)

### T1M-DH/DV Cable Mates: S1SS(T), S1SD(T)



**Note:**  
Some lengths, styles and  
options are non-standard,  
non-returnable.

View complete specifications at: [samtec.com?T1M](http://samtec.com?T1M)

# Mouser Electronics

Authorized Distributor

Click to View Pricing, Inventory, Delivery & Lifecycle Information:

[Samtec:](#)

[T1M-10-S-S-V-K-TR](#)