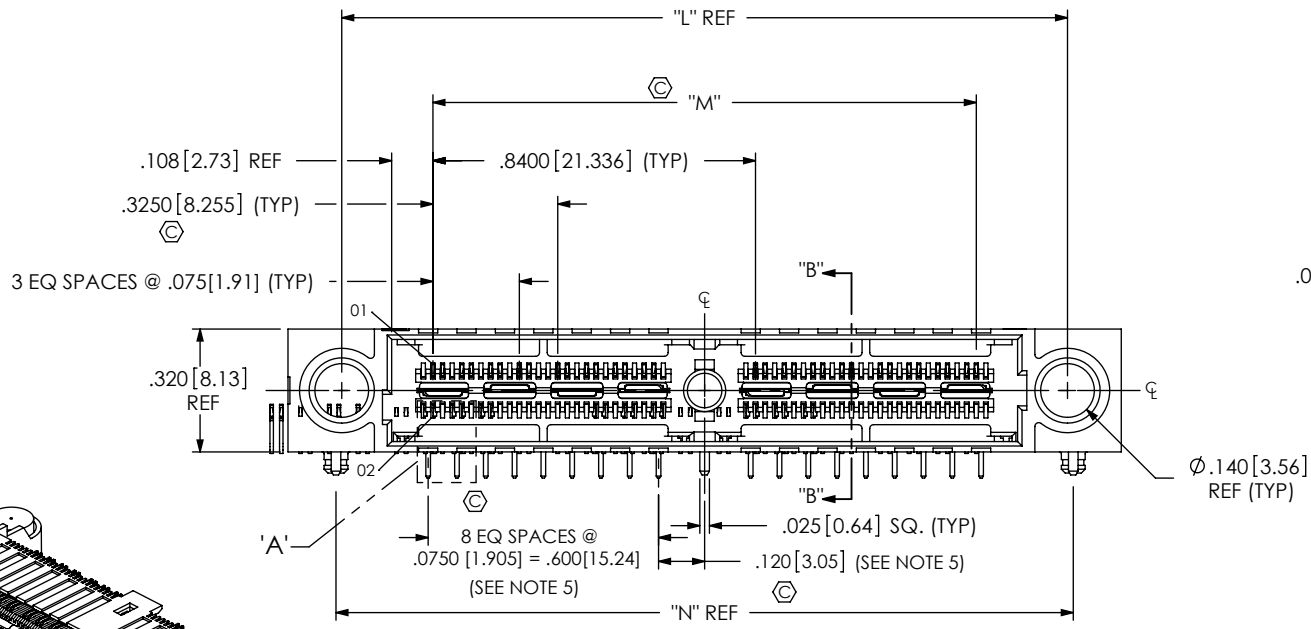
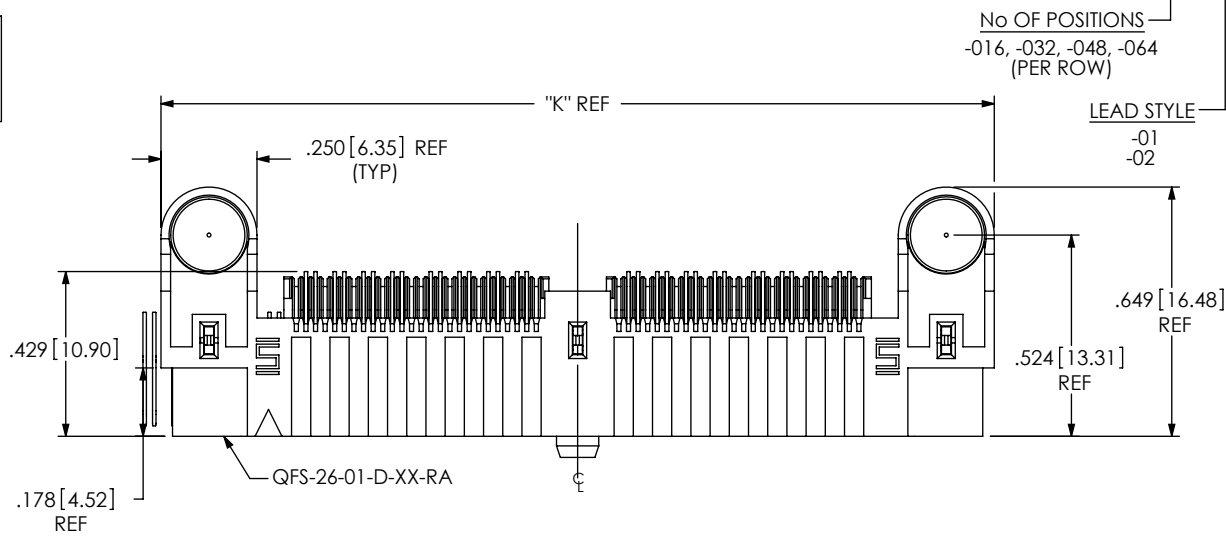


DO NOT SCALE FROM THIS PRINT

QFS-XXX-XX-XX-D-DP-RA-XXX-XX



- NOTES:
- Ⓢ REPRESENTS A CRITICAL DIMENSION.
 - BURR ALLOWANCE: .0010 [0.02] MAX.
 - MINIMUM PUSHOUT FORCE: SIGNAL: .5 LB [2.22 N], GROUND AND COUNTERWEIGHT: 1 LB [4.45 N].
 - PARTS TO BE PACKAGED IN TRAYS AS STANDARD.
 - DOES NOT APPLY TO 1 BANK.

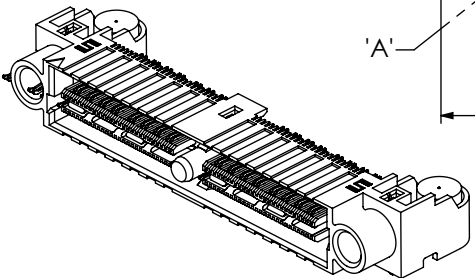


FIG 1 (QFS-032-01-XX-D-DP-RA SHOWN)

TABLE 5

No OF POS	"K"	"L"	"M"	"N"
-16	1.330 [33.78]	1.050 [26.67]	0.575 [14.61]	1.080 [27.43]
-32	2.170 [55.12]	1.890 [48.01]	1.415 [35.94]	1.920 [48.77]
-48	3.010 [76.45]	2.730 [69.34]	2.255 [57.28]	2.760 [70.10]
-64	3.850 [97.79]	3.570 [90.68]	3.095 [78.61]	3.600 [91.44]

UNLESS OTHERWISE SPECIFIED, DIMENSIONS ARE IN INCHES. TOLERANCES ARE:
DECIMALS ANGLES
.XX: ±.01 [.3] 2°
.XXX: ±.005 [.13]
.XXXX: ±.0020 [.051]

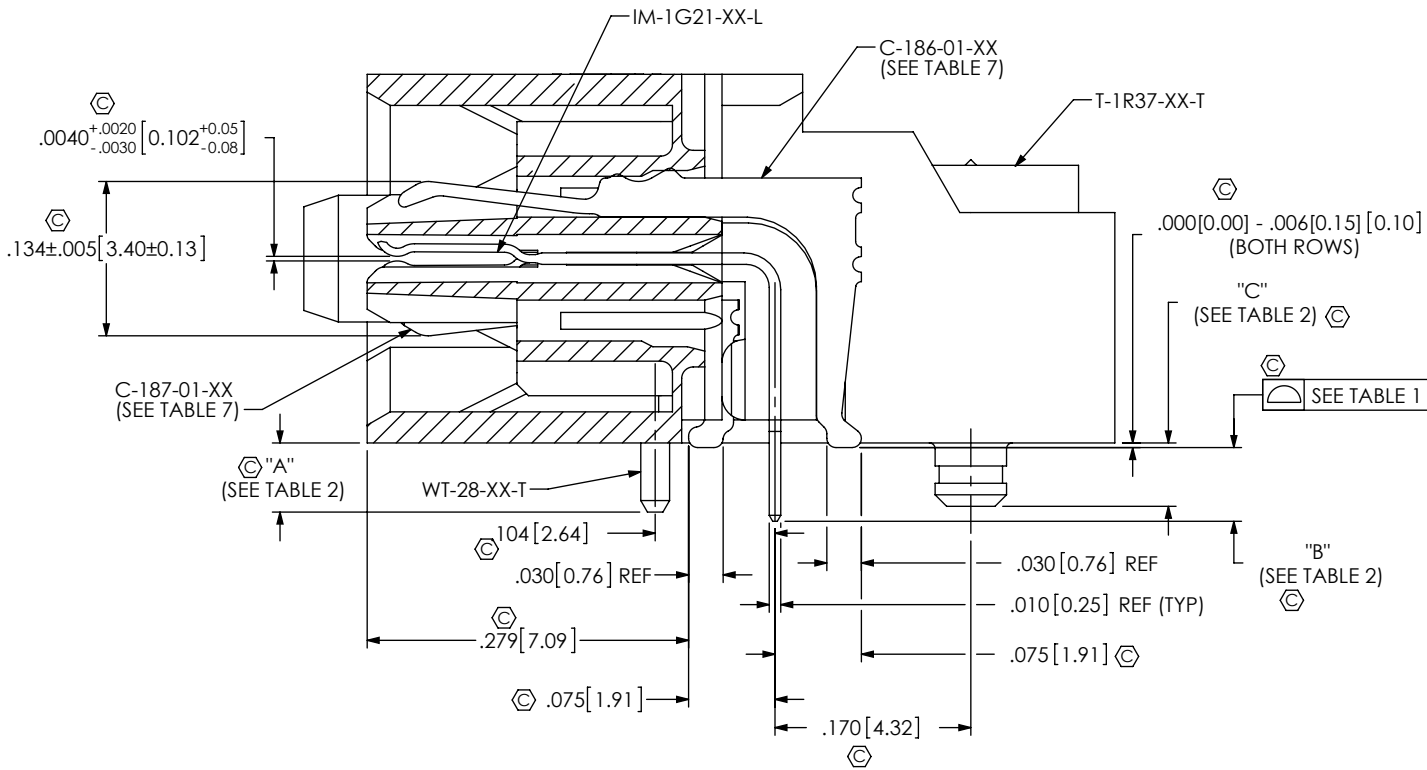
PROPRIETARY NOTE
THIS DOCUMENT CONTAINS INFORMATION CONFIDENTIAL AND PROPRIETARY TO SAMTEC, INC. AND SHALL NOT BE REPRODUCED OR TRANSFERRED TO OTHER DOCUMENTS OR DISCLOSED TO OTHERS OR USED FOR ANY PURPOSE OTHER THAN THAT WHICH IT WAS OBTAINED WITHOUT THE EXPRESSED WRITTEN CONSENT OF SAMTEC, INC.

samtec
520 PARK EAST BLVD, NEW ALBANY, IN 47150
PHONE: 812-944-6733 FAX: 812-948-5047
e-Mail: info@SAMTEC.com code 55322

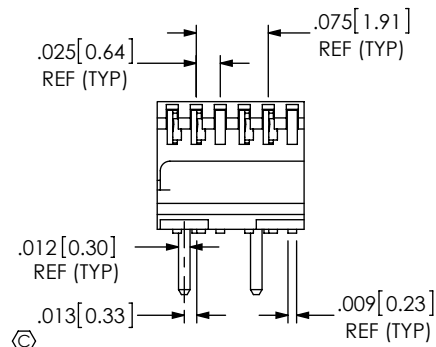
MATERIAL: DO NOT SCALE DRAWING SHEET SCALE: 2:1
INSULATOR: LCP, UL94V-0, COLOR BLACK
CONTACT & GROUND PLANE: PHOS BRONZE
COUNTERWEIGHT: BRASS

DESCRIPTION:
.635mm RA DIFFERENTIAL PAIRS SOCKET ASSEMBLY
DWG. NO.
QFS-XXX-XX-XX-D-DP-RA-XXX-XX

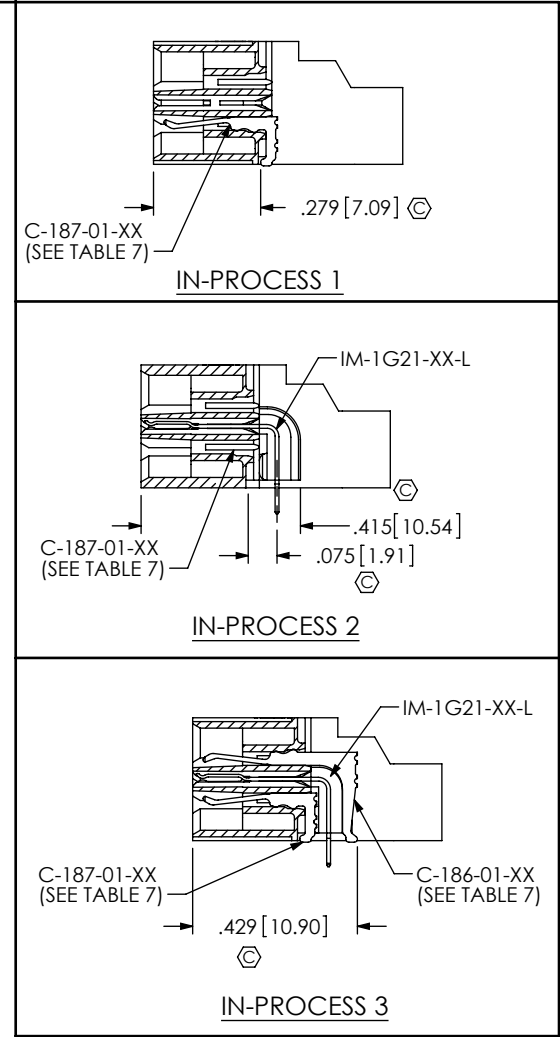
BY: BRATCHER 01/02/2007 SHEET 1 OF 4



SECTION "B"- "B"



DETAIL 'A'
SCALE 5:1



No OF POSITIONS	COPLANARITY
-016 & -032	.004[0.10]
-048 & -064	.006[0.15]

LEAD STYLE	"A"	"B"	"C"	WT-28-XX-T
-01	.060[1.52]	.064[1.63]	.055[1.40]	WT-28-01-T
-02	.091[2.31]	.095[2.41]	.086[2.18]	WT-28-02-T

PROPRIETARY NOTE
 THIS DOCUMENT CONTAINS INFORMATION CONFIDENTIAL AND PROPRIETARY TO SAMTEC, INC. AND SHALL NOT BE REPRODUCED OR TRANSFERRED TO OTHER DOCUMENTS OR DISCLOSED TO OTHERS OR USED FOR ANY PURPOSE OTHER THAN THAT WHICH IT WAS OBTAINED WITHOUT THE EXPRESSED WRITTEN CONSENT OF SAMTEC, INC.

DO NOT SCALE DRAWING

SHEET SCALE: 6:1

samtec

520 PARK EAST BLVD, NEW ALBANY, IN 47150
 PHONE: 812-944-6733 FAX: 812-948-5047
 e-Mail: info@SAMTEC.com code 55322

DESCRIPTION:
 .635mm RA DIFFERENTIAL PAIRS SOCKET ASSEMBLY

DWG. NO.
QFS-XXX-XX-XX-D-DP-RA-XXX-XX

BY: BRATCHER 01/02/2007 SHEET 2 OF 4

TABLE 3							
LEAD STYLE	CONTACT 1	CONTACT 2	"D"	"E"	"F"	"G"	"H"
-01	C-79-28-XX	C-79-29-XX	.261[6.63]	.484[12.29]	.461[11.71]	.684[17.37]	.106[2.69]
-02	C-79-20-XX	C-79-20A-XX	.287[7.29]	.510[12.95]	.487[12.37]	.710[18.03]	.132[3.35]

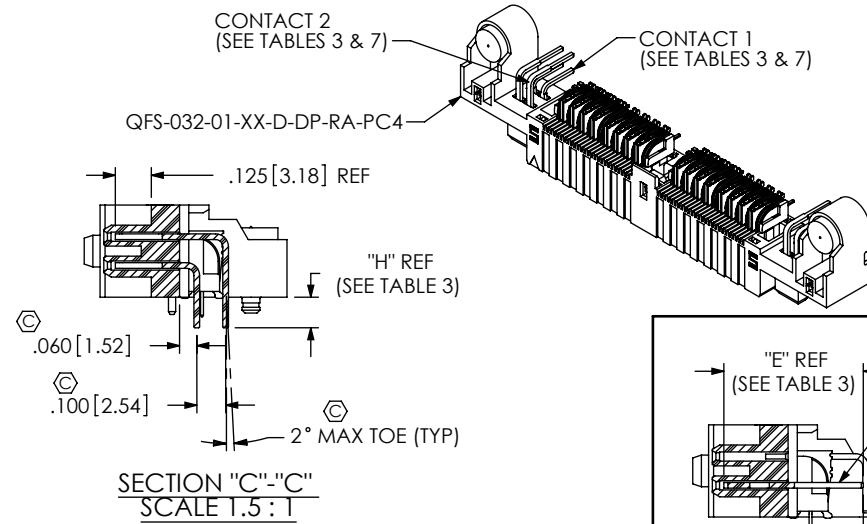
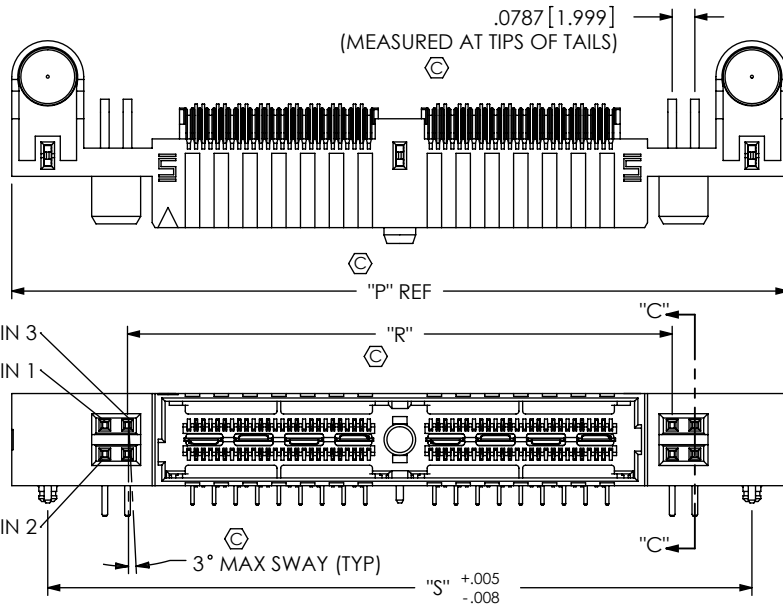


FIG 2
(QFS-032-01-XX-D-DP-RA-PC4 SHOWN)
(SAME AS FIG 1, DIFFERENT AS SHOWN)

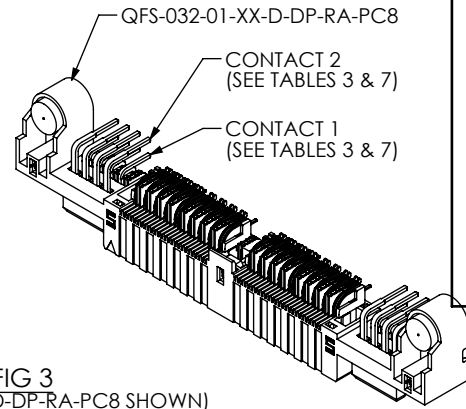
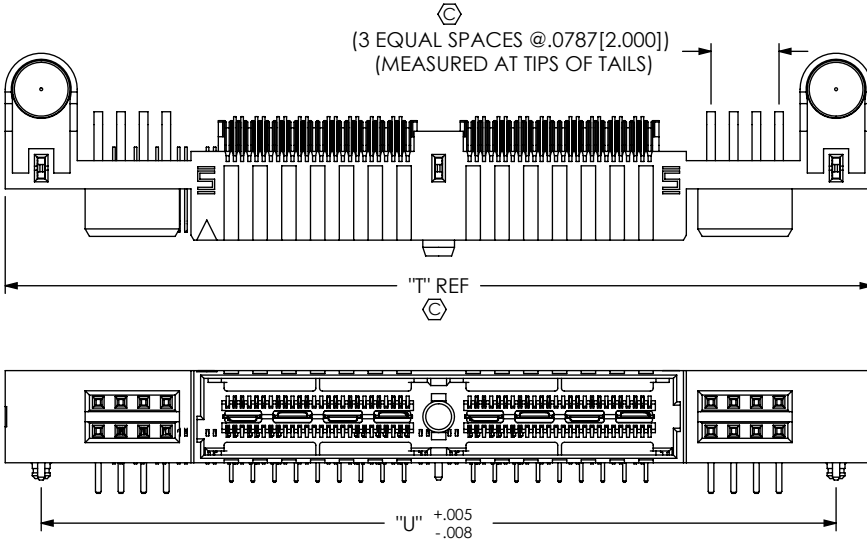
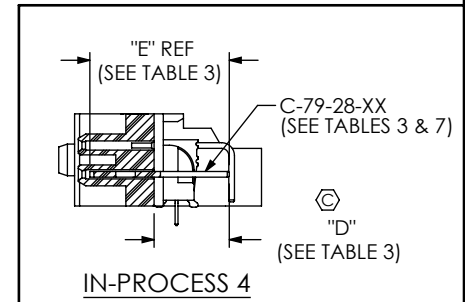


FIG 3
(QFS-032-01-XX-D-DP-RA-PC8 SHOWN)
(SAME AS FIG 1, DIFFERENT AS SHOWN)

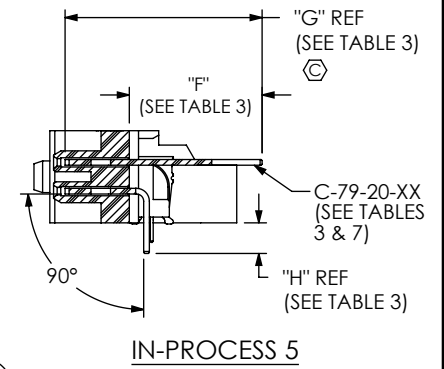


TABLE 6					
No OF POS	"P"	"R"	"S"	"T"	"U"
-16	1.855 [47.12]	1.051 [26.70]	1.605 [40.77]	2.170 [55.12]	1.920 [48.77]
-32	2.695 [68.45]	1.891 [48.03]	2.445 [62.10]	3.010 [76.45]	2.760 [70.10]
-48	3.535 [89.79]	2.731 [69.37]	3.285 [83.44]	3.850 [97.79]	3.600 [91.44]
-64	4.375 [111.13]	3.571 [90.70]	4.125 [104.78]	4.690 [119.13]	4.440 [112.78]

PROPRIETARY NOTE
THIS DOCUMENT CONTAINS INFORMATION CONFIDENTIAL AND PROPRIETARY TO SAMTEC, INC. AND SHALL NOT BE REPRODUCED OR TRANSFERRED TO OTHER DOCUMENTS OR DISCLOSED TO OTHERS OR USED FOR ANY PURPOSE OTHER THAN THAT WHICH IT WAS OBTAINED WITHOUT THE EXPRESSED WRITTEN CONSENT OF SAMTEC, INC.

DO NOT SCALE DRAWING

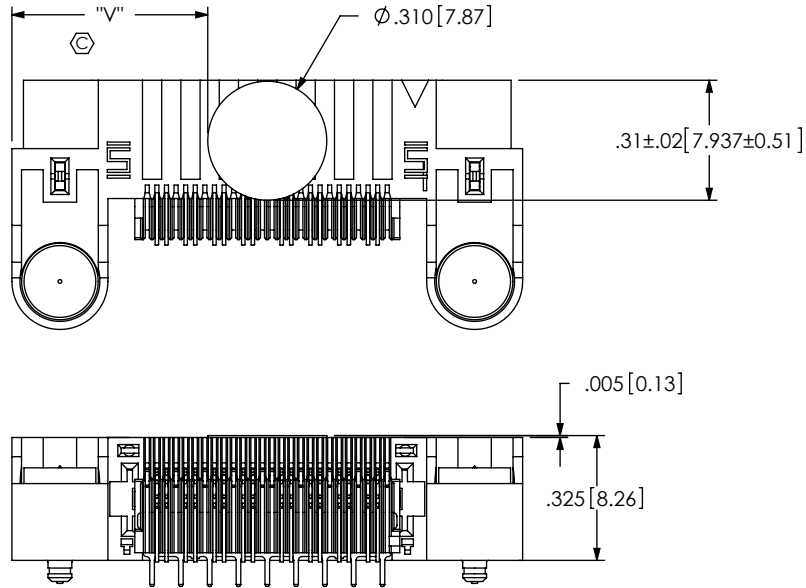
SHEET SCALE: 1:1

samtec
520 PARK EAST BLVD, NEW ALBANY, IN 47150
PHONE: 812-944-6733 FAX: 812-948-5047
e-Mail: info@SAMTEC.com code 55322

DESCRIPTION:
.635mm RA DIFFERENTIAL PAIRS SOCKET ASSEMBLY

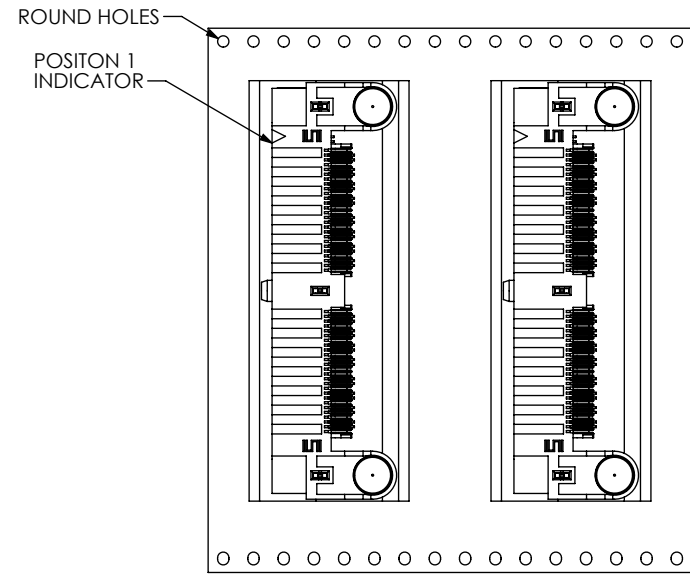
DWG. NO.
QFS-XXX-XX-XX-D-DP-RA-XXX-XX

BY: BRATCHER 01/02/2007 SHEET 3 OF 4



-K: KAPTON PAD
QFS-016-01-XX-D-DP-RA-K SHOWN

No OF POS	"V" - NO OPTION	"V" - PC 4 OPTION	"V" - PC 8 OPTION
-16	0.511 [12.98]	0.773 [19.63]	0.931 [23.65]
-32	0.931 [23.65]	1.193 [30.30]	1.351 [34.32]
-48	1.351 [34.32]	1.613 [40.97]	1.771 [44.98]
-64	1.771 [44.98]	N/A	N/A



USER DIRECTION OF UN-REELING
POCKET NOT DETAILED



PACKAGING VIEW
-TR: TAPE & REEL OPTION
(QFS-032-01-XX-D-DP-RA-TR SHOWN)

	BOTTOM ROW CONTACT	TOP ROW CONTACT	-PCX OPTION CONTACT
-SL	C-186-01-SL	C-187-01-SL	C-79-XX-L: 10 μ " GOLD CONTACT, MATTE TIN TAIL
-S	C-186-01-S	C-187-01-S	C-79-XX-S: 30 μ " GOLD CONTACT, MATTE TIN TAIL
-L	C-186-01-L	C-187-01-L	C-79-XX-L: 10 μ " GOLD CONTACT, MATTE TIN TAIL
-H	C-186-01-H	C-187-01-H	C-79-XX-H: 50 μ " GOLD CONTACT, 3 μ " LIGHT GOLD TAIL

PROPRIETARY NOTE
THIS DOCUMENT CONTAINS INFORMATION CONFIDENTIAL AND PROPRIETARY TO SAMTEC, INC. AND SHALL NOT BE REPRODUCED OR TRANSFERRED TO OTHER DOCUMENTS OR DISCLOSED TO OTHERS OR USED FOR ANY PURPOSE OTHER THAN THAT WHICH IT WAS OBTAINED WITHOUT THE EXPRESSED WRITTEN CONSENT OF SAMTEC, INC.

DO NOT SCALE DRAWING

SHEET SCALE: 2:1



520 PARK EAST BLVD, NEW ALBANY, IN 47150
PHONE: 812-944-6733 FAX: 812-948-5047
e-Mail: info@SAMTEC.com code 55322

DESCRIPTION:
.635mm RA DIFFERENTIAL PAIRS SOCKET ASSEMBLY

DWG. NO.
QFS-XXX-XX-XX-D-DP-RA-XXX-XX

BY: BRATCHER 01/02/2007 SHEET 4 OF 4

Mouser Electronics

Authorized Distributor

Click to View Pricing, Inventory, Delivery & Lifecycle Information:

[Samtec:](#)

[QFS-032-01-L-D-DP-RA-K](#)