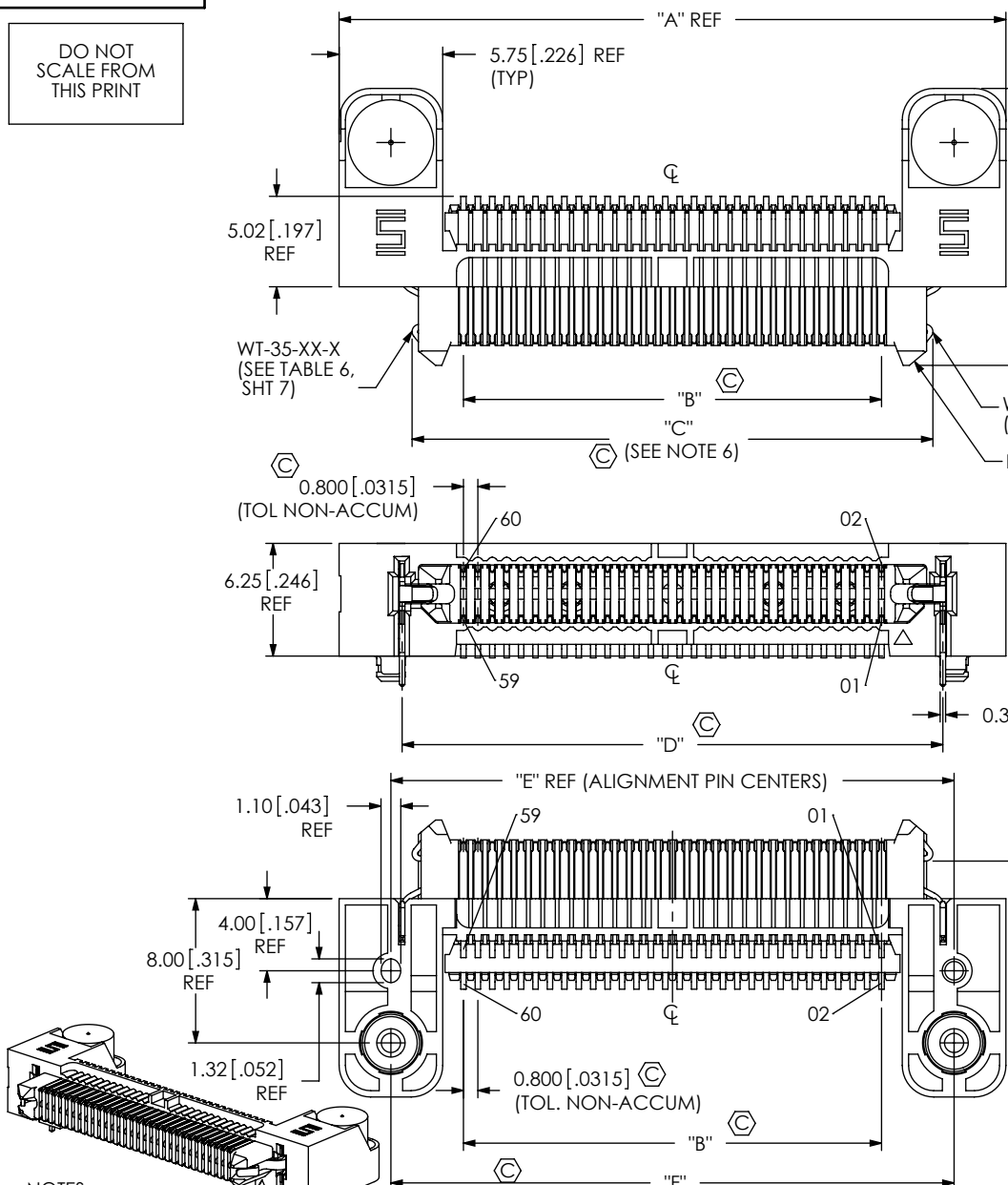


DO NOT SCALE FROM THIS PRINT



No OF POSITIONS (PER ROW)
 -010, -011, -013, -020, -025
 -030, -037, -040, -049, -050
 -060, -070, -075

LEAD STYLE
 -01: 1.58 [0.062] BOARD
 -03: 2.36 [0.093] BOARD

PLATING SPECIFICATION
 -S: 30µ" SELECTIVE GOLD IN CONTACT AREA, MATTE TIN ON TAIL (USE T-1MXX-01-S, T-1MXX-02-S) (SEE TABLE 6, SHT 7)
 -L: 10µ" SELECTIVE GOLD IN CONTACT AREA, MATTE TIN ON TAIL (USE T-1MXX-01-L, T-1MXX-02-L) (SEE TABLE 6, SHT 7)

TAPE & REEL OPTION
 -TR: TAPE & REEL (STANDARD PACKAGING) (SEE NOTE 4)

OPTION
 -K: PAD (USE K-500-300)
 -L: ESD LATCHES (SEE TABLE 4 FOR AVAILABILITY)
 -DS: DIFFERENTIAL PAIR (HOT SWAP) (SEE FIG 2 SHT 7) (SEE TABLE 4 FOR AVAILABILITY)

-RA: RIGHT ANGLE

ROW SPECIFICATION
 -D: DOUBLE (USE ERM8-XXX-01-D-RA)

TABLE 5

LEAD STYLE	"H"	"J"
-01	1.68 [0.066]	1.40 0.055
-03	2.46 [0.097]	2.19 0.086

TABLE 4

POSITION	-DS & -L OPTION AVAILABILITY
-010	-L
-011	-L
-013	-DS, -L
-020	-L
-025	-DS, -L
-030	-L
-037	-DS, -L
-040	-L
-049	-DS, -L
-050	-L
-060	-L
-070	-L
-075	-L

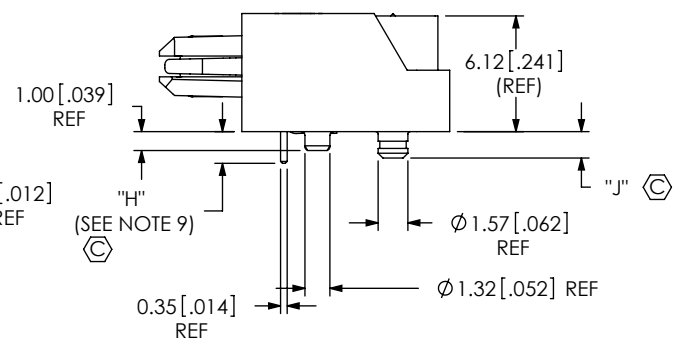


TABLE 1

POSITION	"A"	"B"	"C"	"D"	"E"	"F"
-010	21.00 [0.827]	7.20 [0.283]	12.90 [0.508]	14.00 [0.551]	15.25 [0.600]	15.25 [0.600]
-011	21.80 [0.858]	8.00 [0.315]	13.70 [0.539]	14.80 [0.583]	16.05 [0.632]	16.05 [0.632]
-013	23.40 [0.921]	9.60 [0.378]	15.30 [0.602]	16.40 [0.646]	17.65 [0.695]	17.65 [0.695]
-020	29.00 [1.142]	15.20 [0.598]	20.90 [0.823]	22.00 [0.866]	23.25 [0.915]	23.25 [0.915]
-025	33.00 [1.299]	19.20 [0.756]	24.90 [0.980]	26.00 [1.024]	27.25 [1.073]	27.25 [1.073]
-030	37.00 [1.457]	23.20 [0.913]	28.90 [1.138]	30.00 [1.181]	31.25 [1.230]	31.25 [1.230]
-037	42.60 [1.677]	28.80 [1.134]	34.50 [1.358]	35.60 [1.402]	36.85 [1.451]	36.85 [1.451]
-040	45.00 [1.772]	31.20 [1.228]	36.90 [1.453]	38.00 [1.496]	39.25 [1.545]	39.25 [1.545]
-049	52.20 [2.055]	38.40 [1.512]	44.10 [1.736]	45.20 [1.780]	46.45 [1.829]	46.45 [1.829]
-050	53.00 [2.087]	39.20 [1.543]	44.90 [1.768]	46.00 [1.811]	47.25 [1.860]	47.25 [1.860]
-060	61.00 [2.402]	47.20 [1.858]	52.90 [2.083]	54.00 [2.126]	55.25 [2.175]	55.25 [2.175]
-070	69.00 [2.717]	55.20 [2.173]	60.90 [2.398]	62.00 [2.441]	63.25 [2.490]	63.25 [2.490]
-075	73.00 [2.874]	59.20 [2.331]	64.90 [2.555]	66.00 [2.598]	67.25 [2.648]	67.25 [2.648]

- NOTES:
- REPRESENTS A CRITICAL DIMENSION.
 - BURR ALLOWANCE: .02[0.001] MAX.
 - MINIMUM PUSHOUT /PULLOUT FORCE: SIGNAL: 2.22 N [0.5 LB], LATCH AND COUNTERWEIGHT: 4.45 N [1 LB].
 - FOR QUANTITIES UP TO 49 PIECES, NO LEADER, TRAILER, OR EIA-481-D REEL TO BE SUPPLIED. FOR QUANTITIES FROM 50-124 PIECES, NO LEADER OR TRAILER WILL BE SUPPLIED.
 - MEASURE AT BEND TANGENCY.
 - APPLIES TO -L OPTION ONLY.
 - MAXIMUM CUT BURR ON CUT TAILS IS 0.10[0.004].
 - DIMENSIONS MUST BE MEASURED BOTH ENDS OF COMB OR CONNECTOR.
 - USE -Z- DATUM ZONE FOR MEASUREMENT ONLY.
 - USE INSPECTION FIXTURE #AT-2304-801-02 TO CHECK TAIL CRITICALS.

FIG 1
ERM8-030-01-S-D-RA-L

UNLESS OTHERWISE SPECIFIED, DIMENSIONS ARE IN MILLIMETERS [INCHES]. TOLERANCES ARE:
 DECIMALS ANGLES 2°
 X.X: ±0.3 [0.1]
 X.XX: ±0.13 [0.05]
 X.XXX: ±0.050 [0.020]

PROPRIETARY NOTE
 THIS DOCUMENT CONTAINS INFORMATION CONFIDENTIAL AND PROPRIETARY TO SAMTEC, INC. AND SHALL NOT BE REPRODUCED OR TRANSFERRED TO OTHER DOCUMENTS OR DISCLOSED TO OTHERS OR USED FOR ANY PURPOSE OTHER THAN THAT WHICH IT WAS OBTAINED WITHOUT THE EXPRESSED WRITTEN CONSENT OF SAMTEC, INC.

520 PARK EAST BLVD. NEW ALBANY, IN 47150
 PHONE: 812-944-6733 FAX: 812-948-5047
 e-Mail: info@SAMTEC.com code 55322

MATERIAL: DO NOT SCALE DRAWING SHEET SCALE: 2:1
 INSULATOR: LCP UL94V-0, COLOR BLACK
 CONTACTS: PHOS BRONZE
 COUNTERWEIGHT: BRASS
 LATCHES: BeCu

DESCRIPTION:
 .80mm DUAL ROW RIGHT ANGLE SOCKET ASSEMBLY
 DWG. NO.
ERM8-XXX-XX-X-D-RA-XX-TR
 BY: C. PIERCE 8/17/2007 SHEET 1 OF 7

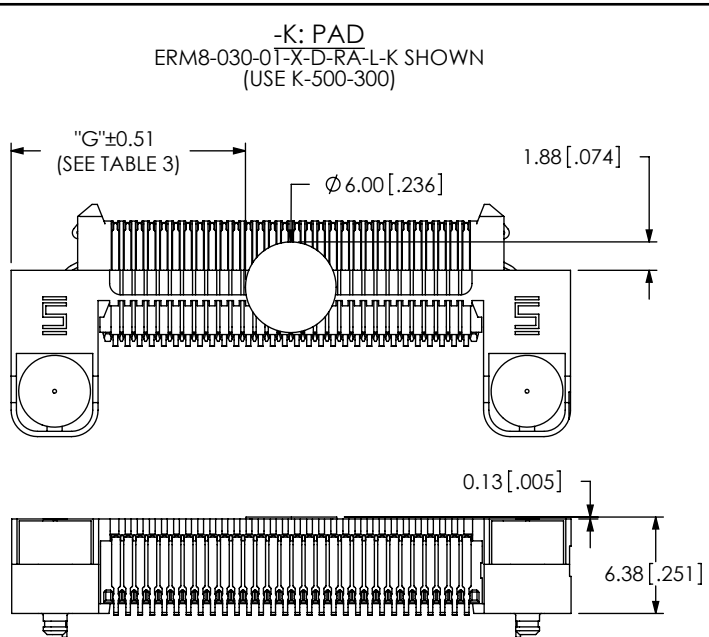
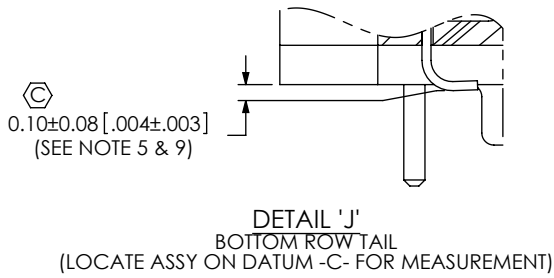
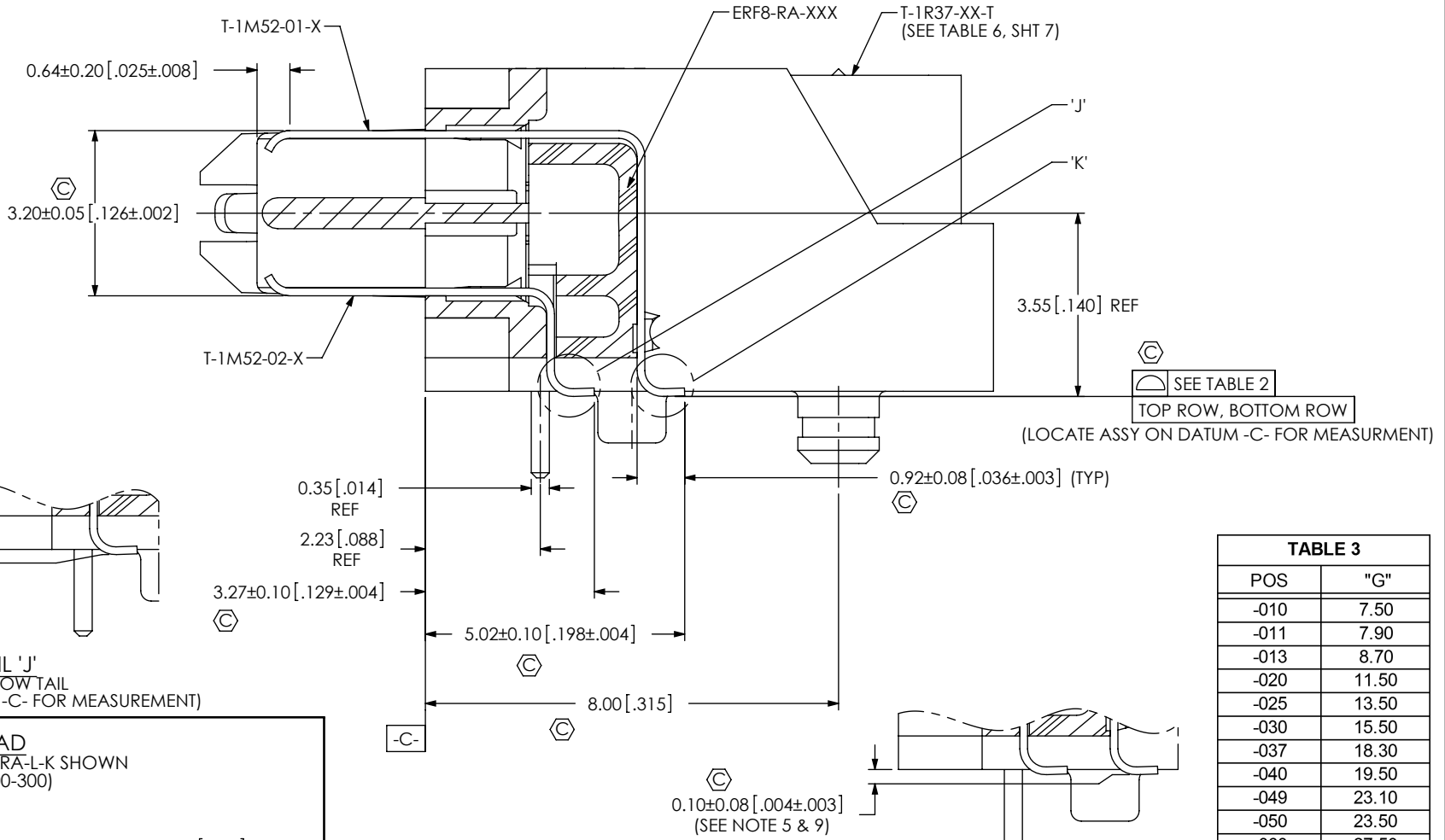


TABLE 3

POS	"G"
-010	7.50
-011	7.90
-013	8.70
-020	11.50
-025	13.50
-030	15.50
-037	18.30
-040	19.50
-049	23.10
-050	23.50
-060	27.50
-070	31.50
-075	33.50

TABLE 2

No OF POSITIONS	BOTTOM ROW STRAIGHTNESS	TOP ROW STRAIGHTNESS	COPLANARITY
-010 THRU -050	0.08 [.003]	0.08 [.003]	0.10 [.004]
-060 THRU -075	0.10 [.004]	0.10 [.004]	0.15 [.006]

PROPRIETARY NOTE
THIS DOCUMENT CONTAINS INFORMATION CONFIDENTIAL AND PROPRIETARY TO SAMTEC, INC. AND SHALL NOT BE REPRODUCED OR TRANSFERRED TO OTHER DOCUMENTS OR DISCLOSED TO OTHERS OR USED FOR ANY PURPOSE OTHER THAN THAT WHICH IT WAS OBTAINED WITHOUT THE EXPRESSED WRITTEN CONSENT OF SAMTEC, INC.

DO NOT SCALE DRAWING

SHEET SCALE: 8:1

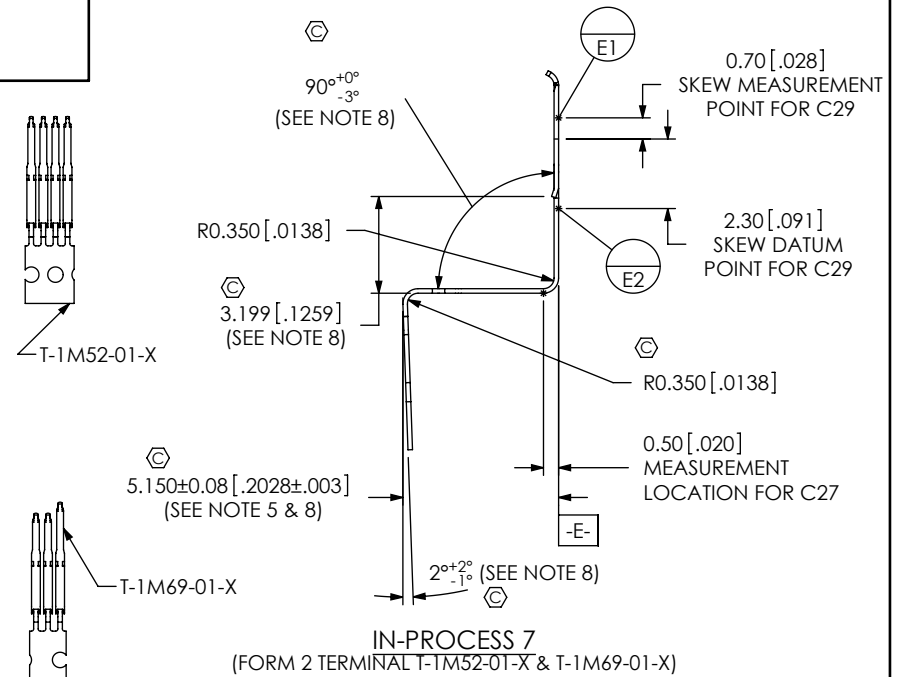
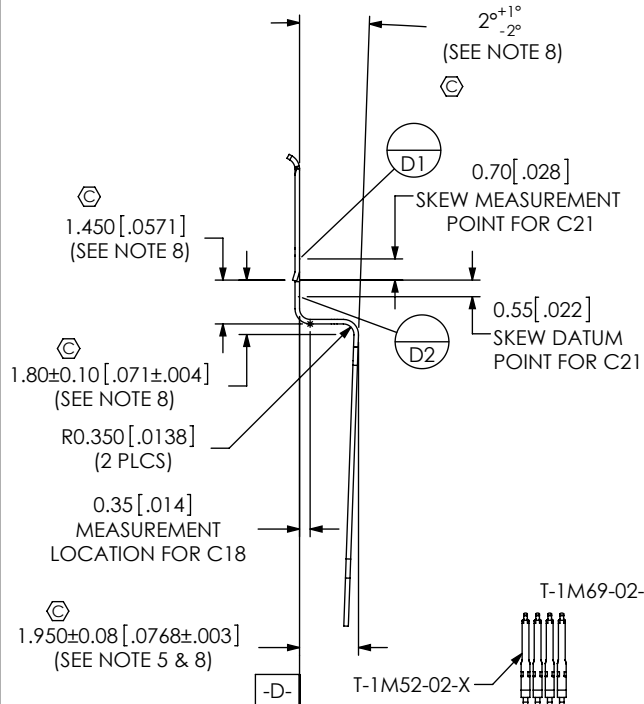
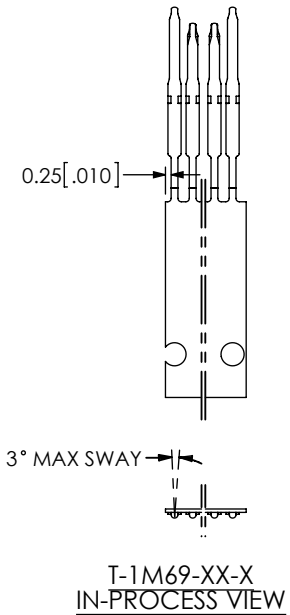
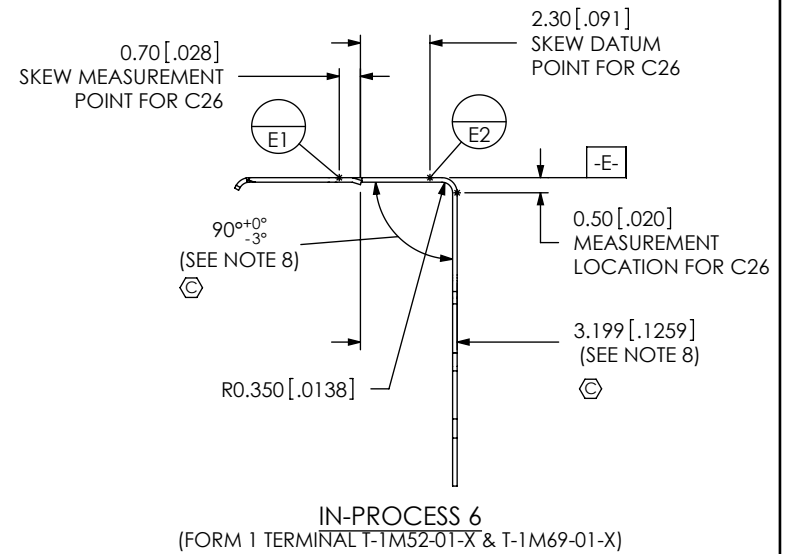
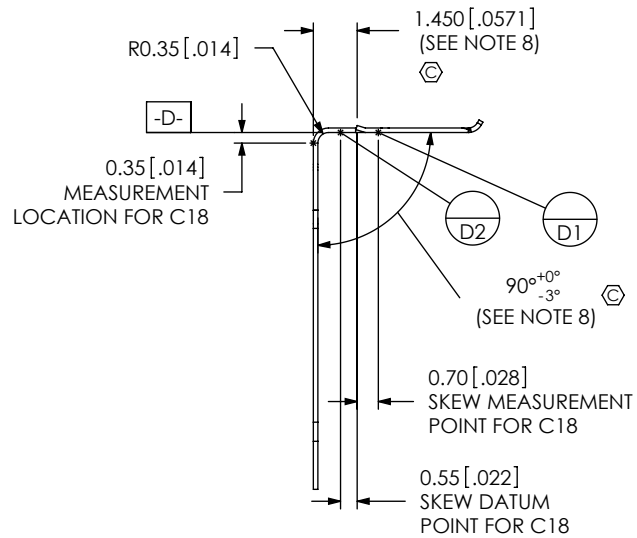
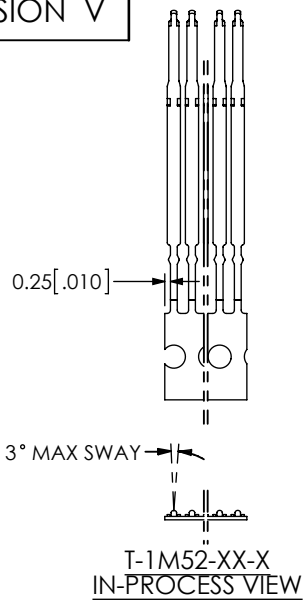
520 PARK EAST BLVD, NEW ALBANY, IN 47150
PHONE: 812-944-6733 FAX: 812-948-5047
e-Mail: info@SAMTEC.com code 55322

DESCRIPTION:
.80mm DUAL ROW RIGHT ANGLE SOCKET ASSEMBLY

DWG. NO.
ERM8-XXX-XX-X-D-RA-XX-TR

BY: C. PIERCE 8/17/2007 SHEET 2 OF 7

REVISION V



F:\DWG\MISC\MKTG\ERM8-XXX-XX-X-D-RA-XX-TR-MKT.SLDDRW

PROPRIETARY NOTE

THIS DOCUMENT CONTAINS INFORMATION CONFIDENTIAL AND PROPRIETARY TO SAMTEC, INC. AND SHALL NOT BE REPRODUCED OR TRANSFERRED TO OTHER DOCUMENTS OR DISCLOSED TO OTHERS OR USED FOR ANY PURPOSE OTHER THAN THAT WHICH IT WAS OBTAINED WITHOUT THE EXPRESSED WRITTEN CONSENT OF SAMTEC, INC.

DO NOT SCALE DRAWING

SHEET SCALE: 4:1

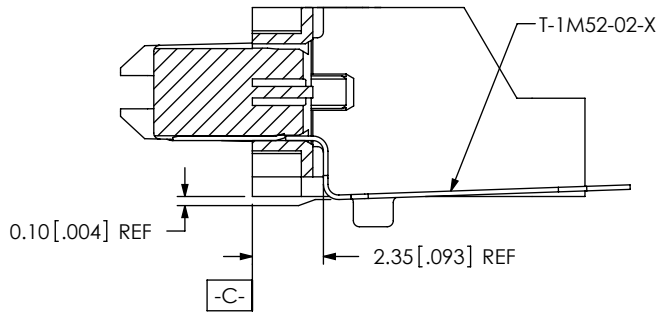
samtec

520 PARK EAST BLVD. NEW ALBANY, IN 47150
PHONE: 812-944-6733 FAX: 812-948-5047
e-Mail: info@SAMTEC.com code 55322

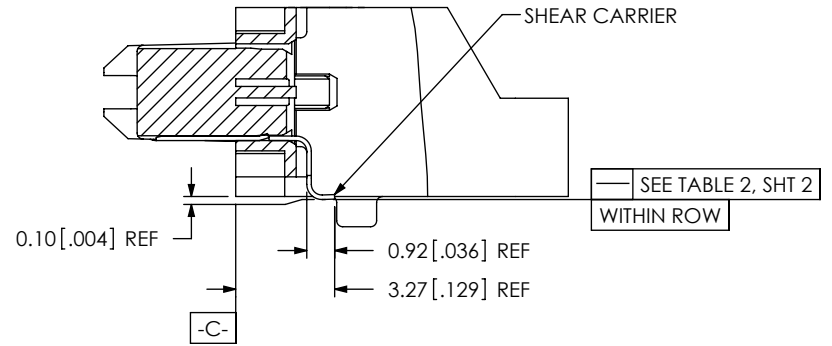
DESCRIPTION:
.80mm DUAL ROW RIGHT ANGLE SOCKET ASSEMBLY

DWG. NO.
ERM8-XXX-XX-X-D-RA-XX-TR

BY: C. PIERCE 8/17/2007 SHEET 3 OF 7

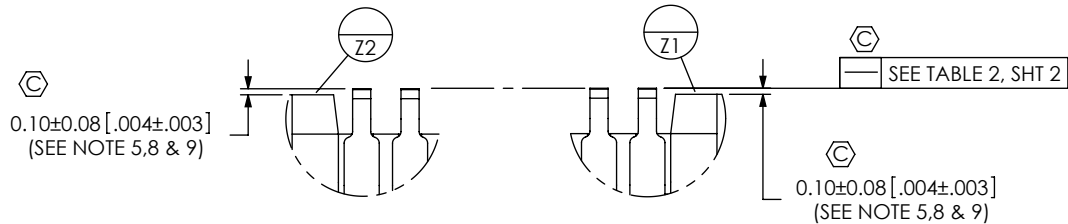
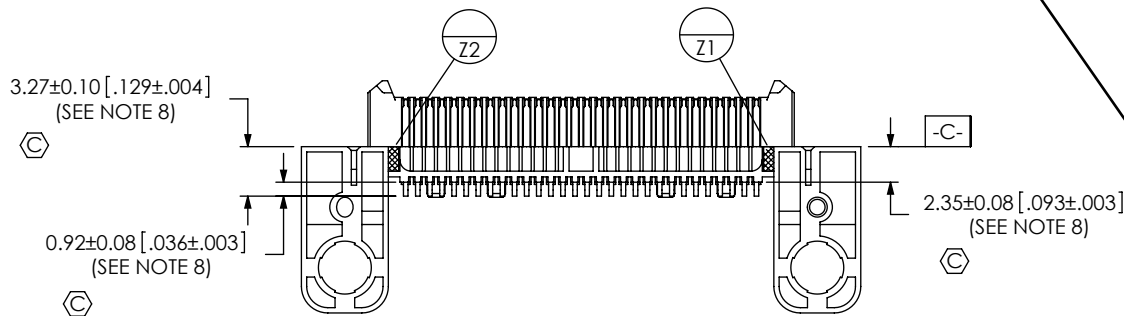


IN-PROCESS 3
(FILL BOTTOM ROW)
(SEE INSPECTION VIEW 1 FOR ASSEMBLY ORIENTATION AND CPC'S)



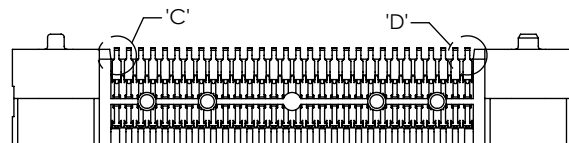
IN-PROCESS 4
(CUT OFF CARRIER)
(SEE INSPECTION VIEW 1 FOR ASSEMBLY ORIENTATION AND CPC'S)

INSPECTION VIEW 1
(SEE NOTE 10)

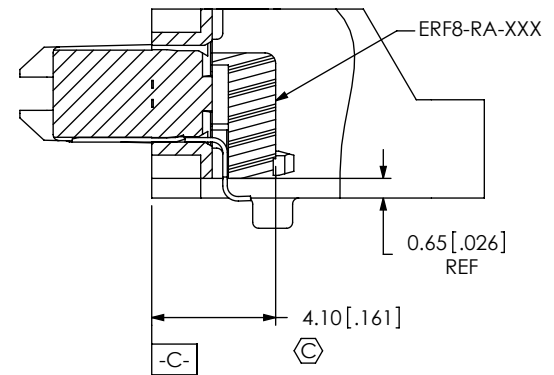


DETAIL 'C'
SCALE 8:1

DETAIL 'D'
SCALE 8:1



INSPECTION FOR IN-PROCESS 3 & 4
(CARRIER NOT SHOWN FOR IN PROCESS 3 INSPECTIONS)



IN-PROCESS 5
FILL ERF8-RA-XXX

F:\DWG\MISC\MKTG\ERM8-XXX-XX-X-D-RA-XX-TR-MKT.SLDDRW

PROPRIETARY NOTE

THIS DOCUMENT CONTAINS INFORMATION CONFIDENTIAL AND PROPRIETARY TO SAMTEC, INC. AND SHALL NOT BE REPRODUCED OR TRANSFERRED TO OTHER DOCUMENTS OR DISCLOSED TO OTHERS OR USED FOR ANY PURPOSE OTHER THAN THAT WHICH IT WAS OBTAINED WITHOUT THE EXPRESSED WRITTEN CONSENT OF SAMTEC, INC.

DO NOT SCALE DRAWING

SHEET SCALE: 4:1



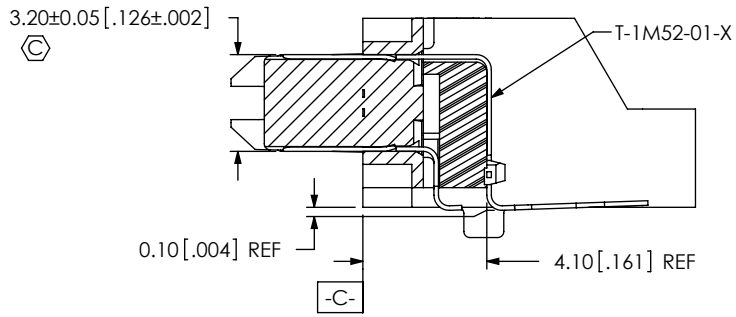
520 PARK EAST BLVD., NEW ALBANY, IN 47150
PHONE: 812-944-6733 FAX: 812-948-5047
e-Mail: info@SAMTEC.com code 55322

DESCRIPTION:
.80mm DUAL ROW RIGHT ANGLE SOCKET ASSEMBLY

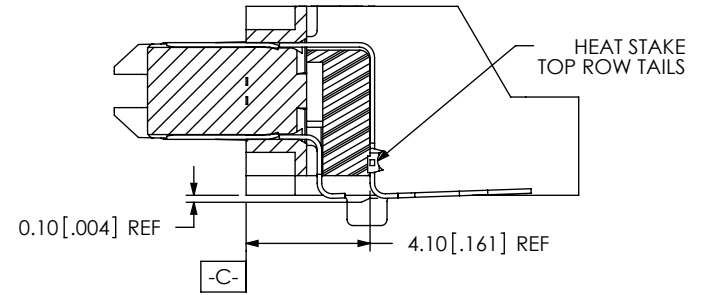
DWG. NO.
ERM8-XXX-XX-X-D-RA-XX-TR

BY: C. PIERCE 8/17/2007 SHEET 4 OF 7

REVISION V

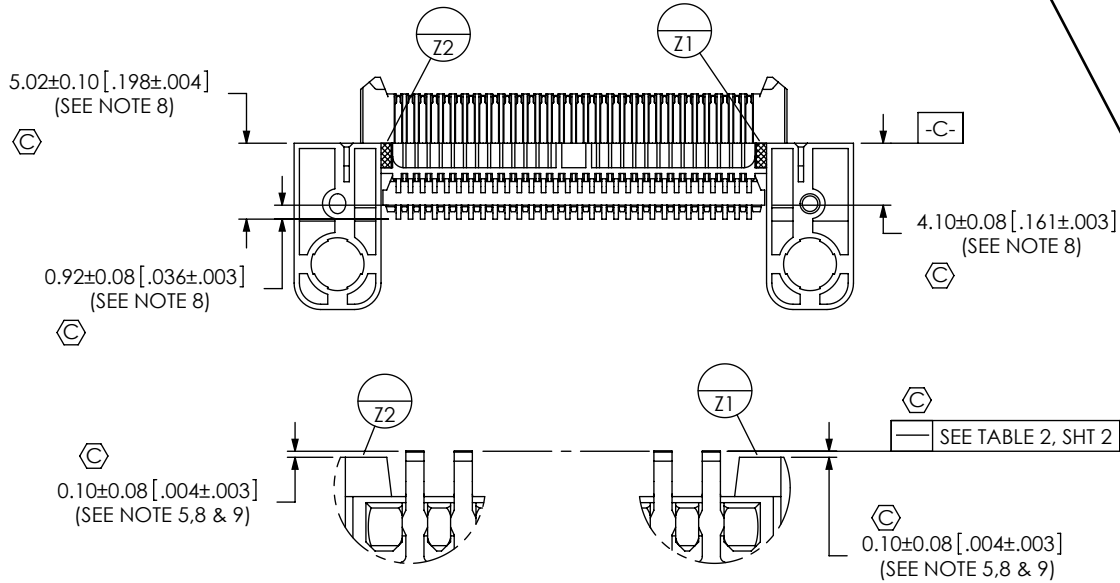


IN-PROCESS 8
(FILL TOP ROW)
(SEE INSPECTION VIEW 2 FOR ASSEMBLY ORIENTATION AND CPC'S)



IN-PROCESS 9
(HEAT STAKE TOP ROW OF CONTACTS)
(SEE INSPECTION VIEW 2 FOR ASSEMBLY ORIENTATION AND CPC'S)

INSPECTION VIEW 2
(SEE NOTE 10)

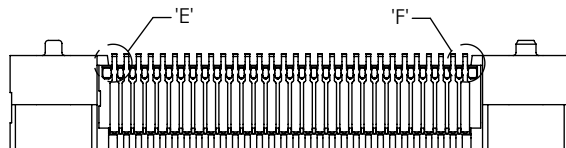


DETAIL 'E'
SCALE 8:1

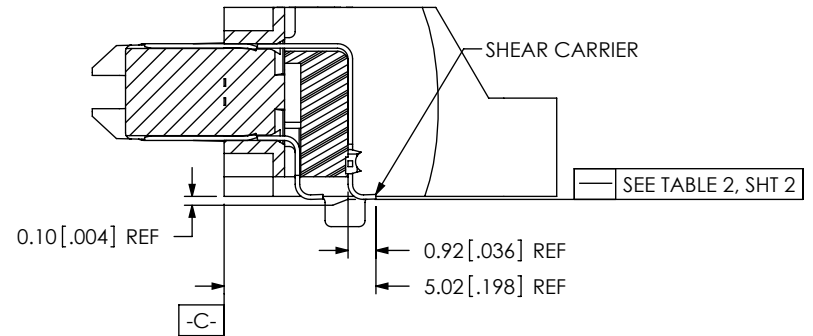
DETAIL 'F'
SCALE 8:1

0.10±0.08 [.004±.003]
(SEE NOTE 5, 8 & 9)

0.10±0.08 [.004±.003]
(SEE NOTE 5, 8 & 9)



INSPECTION FOR IN-PROCESS 8, 9 & 10
(CARRIER NOT SHOWN FOR IN PROCESS 8 INSPECTIONS)



IN-PROCESS 10
(CUT OFF CARRIER)
(SEE INSPECTION VIEW 2 FOR ASSEMBLY ORIENTATION AND CPC'S)

F:\DWG\MISC\MKTG\ERM8-XXX-XX-X-D-RA-XX-TR-MKT.SLDDRW

PROPRIETARY NOTE

THIS DOCUMENT CONTAINS INFORMATION CONFIDENTIAL AND PROPRIETARY TO SAMTEC, INC. AND SHALL NOT BE REPRODUCED OR TRANSFERRED TO OTHER DOCUMENTS OR DISCLOSED TO OTHERS OR USED FOR ANY PURPOSE OTHER THAN THAT WHICH IT WAS OBTAINED WITHOUT THE EXPRESSED WRITTEN CONSENT OF SAMTEC, INC.

DO NOT SCALE DRAWING

SHEET SCALE: 2:1

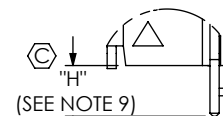
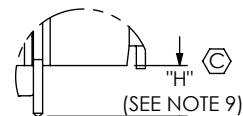
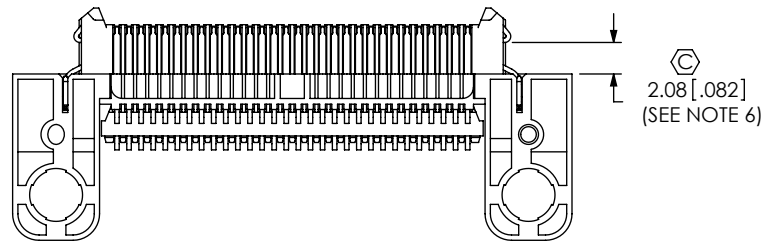
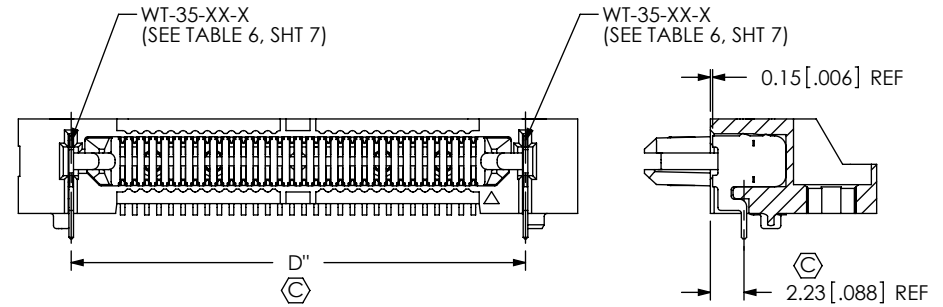
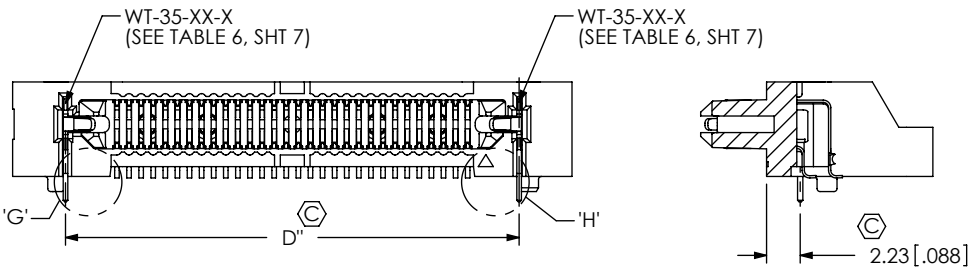


520 PARK EAST BLVD, NEW ALBANY, IN 47150
PHONE: 812-944-6733 FAX: 812-948-5047
e-Mail info@SAMTEC.com code 55322

DESCRIPTION:
.80mm DUAL ROW RIGHT ANGLE SOCKET ASSEMBLY

DWG. NO.
ERM8-XXX-XX-X-D-RA-XX-TR

BY: C. PIERCE 8/17/2007 SHEET 5 OF 7

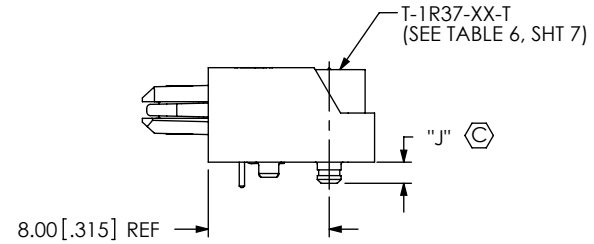
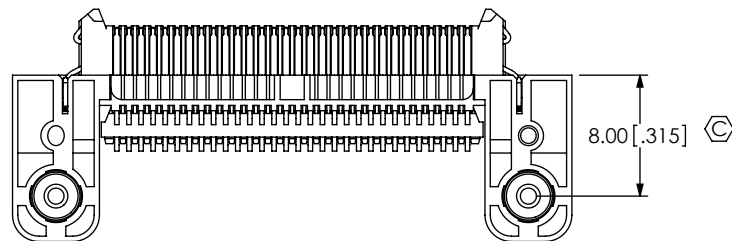


IN-PROCESS 11
FILL WT-35-XX-F
(ERM8-030-01-S-D-RA SHOWN)

IN-PROCESS 11
FILL WT-35-XX-F
(ERM8-030-01-S-D-RA-L SHOWN)

DETAIL 'G'
SCALE 4 : 1

DETAIL 'H'
SCALE 4 : 1



IN-PROCESS 12
FILL T-1R37-XX-T
(SEE TABLE 6, SHT 7)

F:\DWG\MISC\MKTG\ERM8-XXX-XX-X-D-RA-XX-TR-MKT.SLDDRW

PROPRIETARY NOTE

THIS DOCUMENT CONTAINS INFORMATION CONFIDENTIAL AND PROPRIETARY TO SAMTEC, INC. AND SHALL NOT BE REPRODUCED OR TRANSFERRED TO OTHER DOCUMENTS OR DISCLOSED TO OTHERS OR USED FOR ANY PURPOSE OTHER THAN THAT WHICH IT WAS OBTAINED WITHOUT THE EXPRESSED WRITTEN CONSENT OF SAMTEC, INC.

DO NOT SCALE DRAWING

SHEET SCALE: 2:1



520 PARK EAST BLVD. NEW ALBANY, IN 47150
PHONE: 812-944-6733 FAX: 812-948-5047
e-Mail: info@SAMTEC.com code 55322

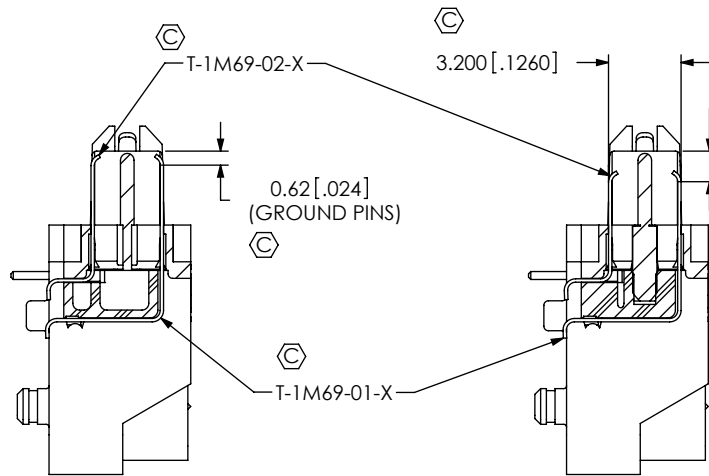
DESCRIPTION:
.80mm DUAL ROW RIGHT ANGLE SOCKET ASSEMBLY

DWG. NO.
ERM8-XXX-XX-X-D-RA-XX-TR

BY: C. PIERCE 8/17/2007 SHEET 6 OF 7

TABLE 6

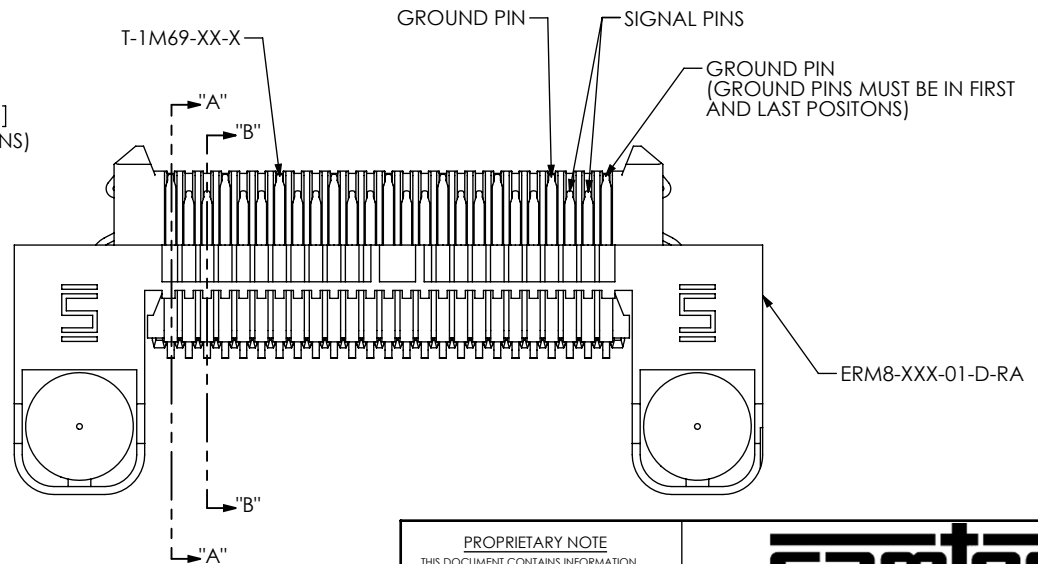
OPTION	STYLE	BODY CALLOUT	SPACER BODY	TERMINALS	COUNTERWEIGHT	WELD TABS
NONE	-01	ERM8-XXX-01-D-RA	ERF8-RA-XX	T-1M52-01-X T-1M52-02-X	T-1R37-01-X	WT-35-03-T
	-03	ERM8-XXX-01-D-RA	ERF8-RA-XX	T-1M52-01-X T-1M52-02-X	T-1R37-02-X	WT-35-06-T
-L	-01	ERM8-XXX-01-D-RA	ERF8-RA-XX	T-1M52-01-X T-1M52-02-X	T-1R37-01-X	WT-35-01-F WT-35-02-F
	-03	ERM8-XXX-01-D-RA	ERF8-RA-XX	T-1M52-01-X T-1M52-02-X	T-1R37-02-X	WT-35-04-F WT-35-05-F
-DS	-01	ERM8-XXX-01-D-RA	ERF8-RA-XX	T-1M69-01-X T-1M69-02-X	T-1R37-01-X	WT-35-03-T
	-03	ERM8-XXX-01-D-RA	ERF8-RA-XX	T-1M69-01-X T-1M69-02-X	T-1R37-02-X	WT-35-06-T
-DS & -L	-01	ERM8-XXX-01-D-RA	ERF8-RA-XX	T-1M69-01-X T-1M69-02-X	T-1R37-01-X	WT-35-01-F WT-35-02-F
	-03	ERM8-XXX-01-D-RA	ERF8-RA-XX	T-1M69-01-X T-1M69-02-X	T-1R37-02-X	WT-35-04-F WT-35-05-F



SECTION "A"- "A"
SCALE 3 : 1

SECTION "B"- "B"
SCALE 3 : 1

FIG 2
ERM8-025-01-X-D-RA-DS-L SHOWN
(DIFFERENT AS SHOWN, OTHERWISE SAME AS FIG 1)



PROPRIETARY NOTE

THIS DOCUMENT CONTAINS INFORMATION CONFIDENTIAL AND PROPRIETARY TO SAMTEC, INC. AND SHALL NOT BE REPRODUCED OR TRANSFERRED TO OTHER DOCUMENTS OR DISCLOSED TO OTHERS OR USED FOR ANY PURPOSE OTHER THAN THAT WHICH IT WAS OBTAINED WITHOUT THE EXPRESSED WRITTEN CONSENT OF SAMTEC, INC.

DO NOT SCALE DRAWING

SHEET SCALE: 2:1



520 PARK EAST BLVD, NEW ALBANY, IN 47150
PHONE: 812-944-6733 FAX: 812-948-5047
e-Mail info@SAMTEC.com code 55322

DESCRIPTION:
.80mm DUAL ROW RIGHT ANGLE SOCKET ASSEMBLY

DWG. NO.
ERM8-XXX-XX-X-D-RA-XX-TR

BY: C. PIERCE 8/17/2007 SHEET 7 OF 7

Mouser Electronics

Authorized Distributor

Click to View Pricing, Inventory, Delivery & Lifecycle Information:

[Samtec:](#)

[ERM8-010-03-L-D-RA-L-TR](#)