

## ISS 1-XX-X

OPTION  
\* -L: LATCH

-02, -03, -04, -05, -06, -07, -08, -09,  
-10, -11, -12, -13, -14,  
-15, -16, -17, -18, -19 & -20

\* = NOT TOOLED

1. © REPRESENTS A CRITICAL DIMENSION.
2. SAMTEC LOGO SHALL APPEAR AT TWO EQUALLY SPACED LOCATIONS ON SURFACE SHOWN, APPROXIMATELY 1.43 X 1.00.
3. ALL MULTIPLE CAVITY MOLDS SHALL IDENTIFY EACH CAVITY WITH A NUMBER DESIGNATION LOCATED WHERE SHOWN.
4. ALL IDENTIFICATION MARKS MUST NOT STAND GREATER THAN 0.05 OFF THE SURFACE OF THE PART.
5. MOLDED SURFACES SHALL BE CONSISTENT AND SMOOTH. SURFACES TO BE FREE OF SCRATCHES, NICKS, SINK AREAS, VOIDS OR OTHER BLEMISHES.
6. T/B BOW TO BE MEASURED ON BOTH SIDES OF PART IN THE AREA DEFINED.
7. GATE PAD TO BE RECESSED 0.10.

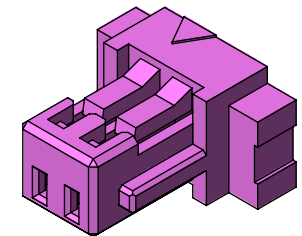
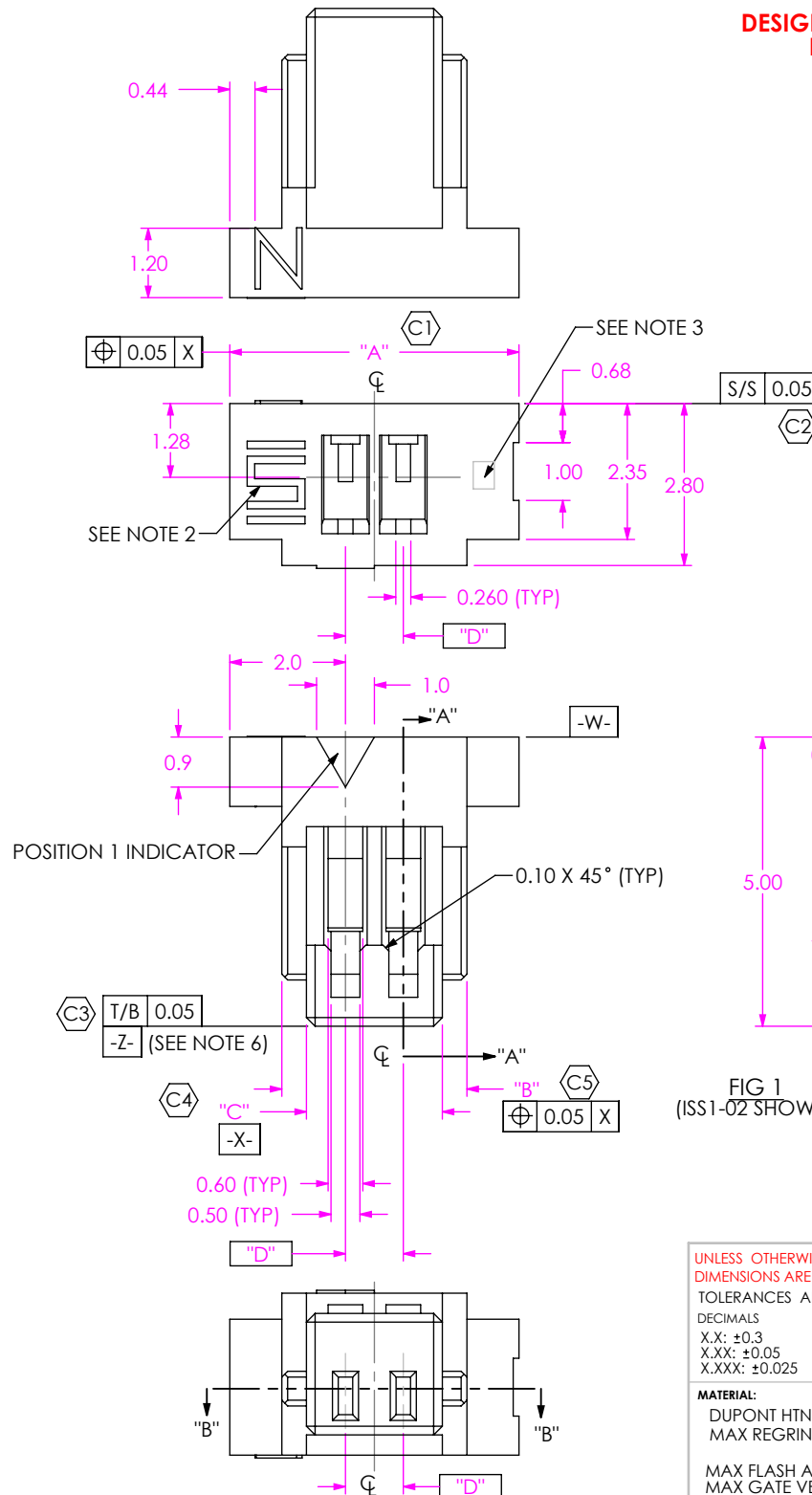
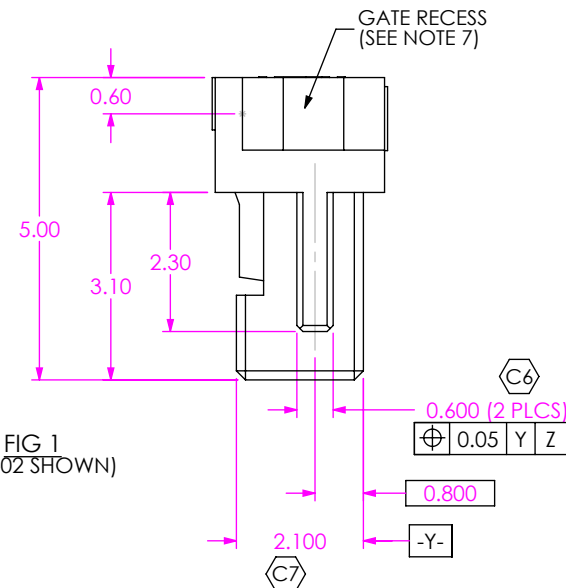


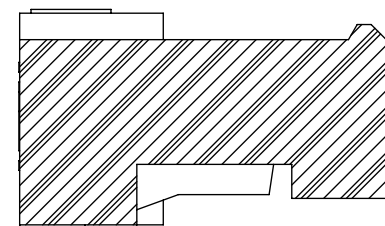
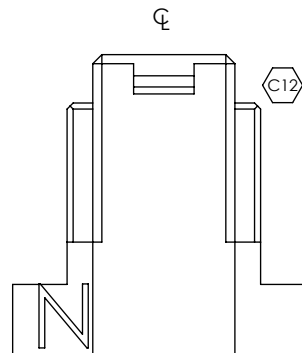
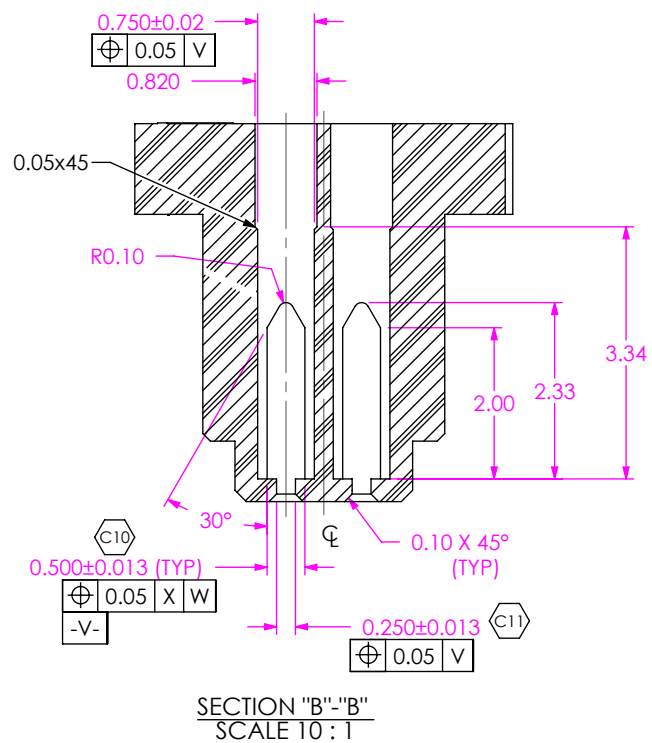
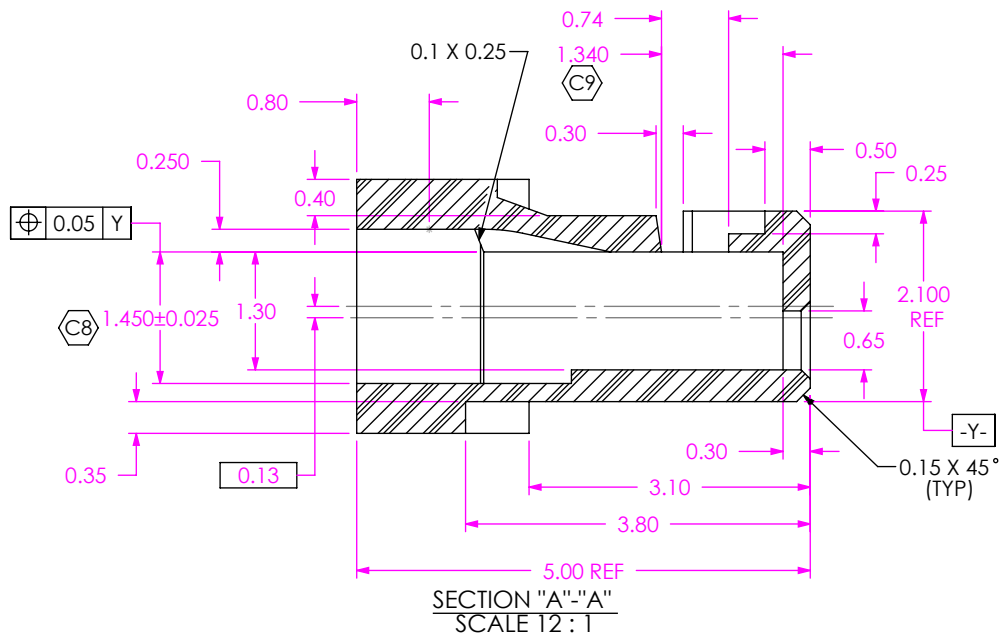
FIG 1  
(ISS1-02 SHOWN)



|SS|-XX-X

c:\enterprisevault\DWG\MISC\MKTG\ISS1-XX-X-MKT.SLDDRW

BY: VICKY Z	04/15/2010	SHEET 1 OF 3
-------------	------------	--------------



SECTION "C"-"C"  
SCALE 10 : 1

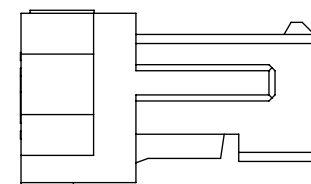
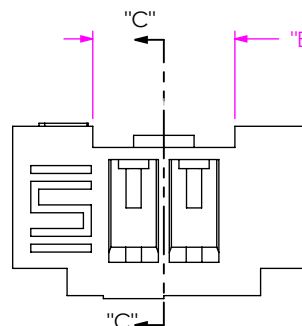


FIG 2  
(ISS1-02-L SHOWN)  
(SAME AS FIG 1, EXCEPT AS SHOWN)  
(NOT TOOLED)

PROPRIETARY NOTE  
THIS DOCUMENT CONTAINS INFORMATION  
CONFIDENTIAL AND PROPRIETARY TO  
SAMTEC, INC. AND SHALL NOT BE REPRODUCED  
OR TRANSFERRED TO OTHER DOCUMENTS OR  
DISCLOSED TO OTHERS OR USED FOR ANY  
PURPOSE OTHER THAN THAT WHICH IT WAS  
OBTAINED WITHOUT THE EXPRESSED WRITTEN  
CONSENT OF SAMTEC, INC.

DO NOT SCALE DRAWING

SHEET SCALE: 8:1

**samtec**

520 PARK EAST BLVD, NEW ALBANY, IN 47150  
PHONE: 812-944-6733 FAX: 812-948-5047  
e-Mail: info@SAMTEC.com code: 55322

DESCRIPTION:  
1.00 MM PITCH S1SX BODY

DWG. NO.  
ISS1-XX-X

BY: VICKY Z 04/15/2010 SHEET 2 OF 3

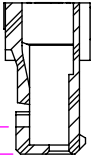
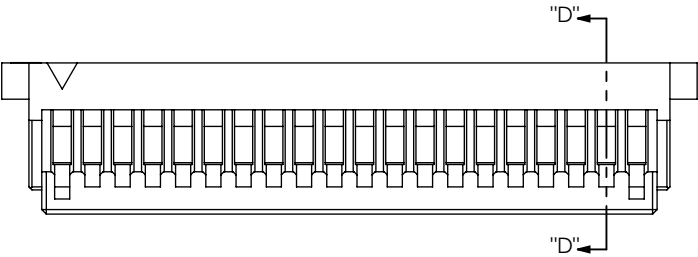
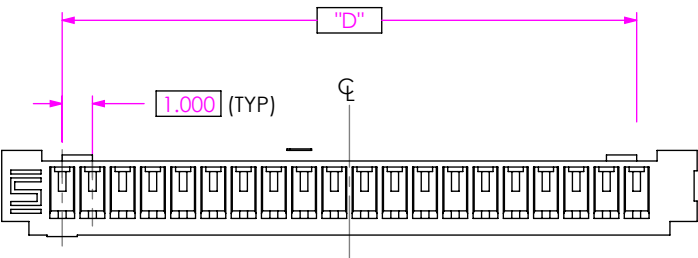
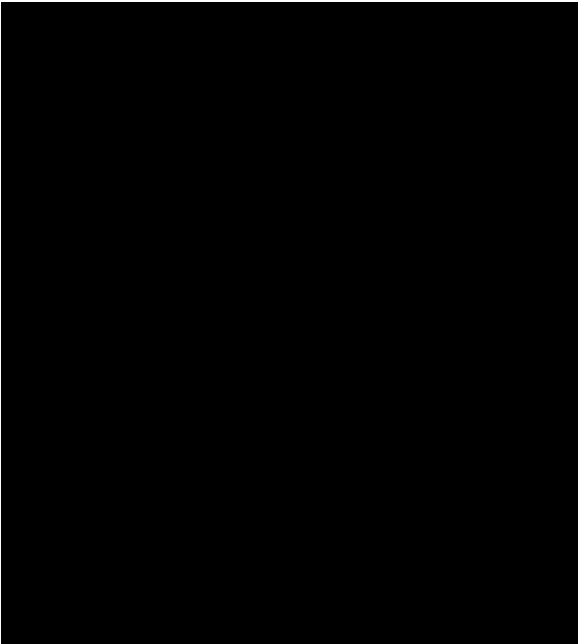


FIG 3  
(ISS1-20-L SHOWN)  
(SAME AS FIG 1, EXCEPT AS SHOWN)  
(NOT TOOLED)

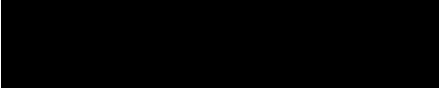
SECTION "D"-"D"  
SCALE 4 : 1



**PROPRIETARY NOTE**  
THIS DOCUMENT CONTAINS INFORMATION  
CONFIDENTIAL AND PROPRIETARY TO  
SAMTEC, INC. AND SHALL NOT BE REPRODUCED  
OR TRANSFERRED TO OTHER DOCUMENTS OR  
DISCLOSED TO OTHERS OR USED FOR ANY  
PURPOSE OTHER THAN THAT WHICH IT WAS  
OBTAINED WITHOUT THE EXPRESSED WRITTEN  
CONSENT OF SAMTEC, INC.

DO NOT SCALE DRAWING

SHEET SCALE: 8:1

		
520 PARK EAST BLVD, NEW ALBANY, IN 47150 PHONE: 812-944-6733 FAX: 812-948-5047 e-Mail: info@SAMTEC.com code: 55322		
DESCRIPTION:	1.00 MM PITCH S1SX BODY	
DWG. NO.	ISS1-XX-X	
BY: VICKY Z	04/15/2010	SHEET 3 OF 3

# Mouser Electronics

Authorized Distributor

Click to View Pricing, Inventory, Delivery & Lifecycle Information:

[Samtec:](#)

[ISS1-04-L](#) [ISS1-06-L](#)