

MACHINED TERMINALS T, S SERIES

Mates with:
SC, SK, SP

Specifications: T, S

All T and S Series are available with a choice of Gold or Tin plating. Add -G or -T as a suffix to the part number shown.

-G Plating:
20µ" (0,51µm) Au over 50µ" (1,27µm) Ni, except T-1R10, T-1R11, T-1R7, T-1R8, T-1R9 and S-1P1 are 10µ" (0,25µm) Au

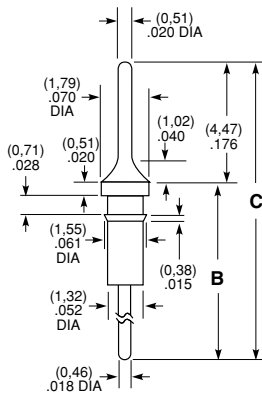
-T Plating:
Sn over 50µ" (1,27µm) Ni or 100µ" (2,54µm) Cu

Current Rating:
1 A except T-1R10 and T-1R11 are 20 A

RECOMMENDED PC HOLE SIZE:

LEAD SIZE	HOLE SIZE
(0,46) .018 DIA	(0,61) .024 DIA
(0,51) .020 DIA	(0,66) .026 DIA
(0,64) .025 DIA	(0,79) .031 DIA
(0,76) .030 DIA	(0,91) .036 DIA
(0,89) .035 DIA	(1,04) .041 DIA
(1,14) .045 DIA	(1,30) .051 DIA
(1,32) .052 DIA	(1,47) .058 DIA
(0,46) .018 SQ	(0,76) .030 DIA
(0,64) .025 SQ	(1,02) .040 DIA
(1,14) .045 SQ	(1,75) .069 DIA
(0,20) .008 x (0,71) .028	(0,89) .035 DIA
(0,25) .010 x (0,51) .020	(0,71) .028 DIA
(0,41) .016 x (0,51) .020	(0,79) .031 DIA
(0,41) .016 x (0,61) .024	(0,89) .035 DIA
(0,41) .016 x (0,79) .031	(1,04) .041 DIA

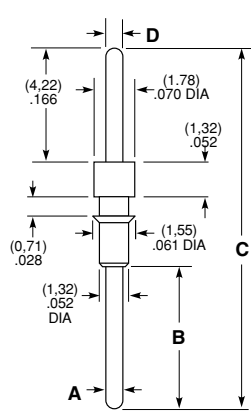
T-1R5-1- T-1R5-2-



Part No.	B TAIL	C OAL
T-1R5-1-	(4,75) .187	(12,85) .506
T-1R5-2-	(7,29) .287	(15,44) .608

Material: Phosphor Bronze

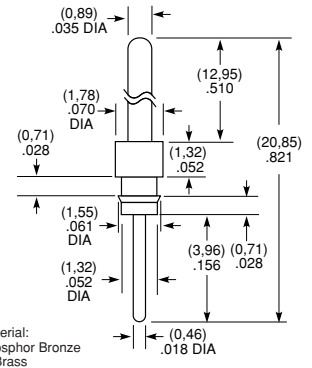
T-1R5- T-1R7-



Part No.	A DIA	B TAIL	C OAL	D DIA
T-1R5-	(0,46) .018	(3,96) .156	(12,12) .477	(0,46) .018
T-1R7-01	(0,64) .025	(5,33) .210	(13,46) .530	(0,64) .025
T-1R7-02	(0,89) .035	(5,33) .210	(13,46) .530	(0,64) .025
T-1R7-03	(1,14) .045	(5,33) .210	(13,46) .530	(0,64) .025

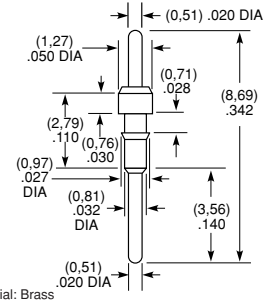
Material: Brass

T-1R12-



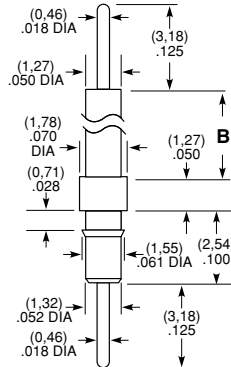
Material:
Phosphor Bronze
or Brass

T-1R13-



Material: Brass

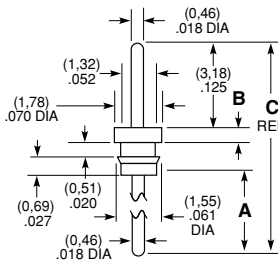
T-1R14-



Part No.	B
T-1R14-1-	(1,52) .060
T-1R14-2-	(4,70) .185
T-1R14-3-	(11,05) .435
T-1R14-4-	(17,40) .685

Material:
Phosphor Bronze
or Brass

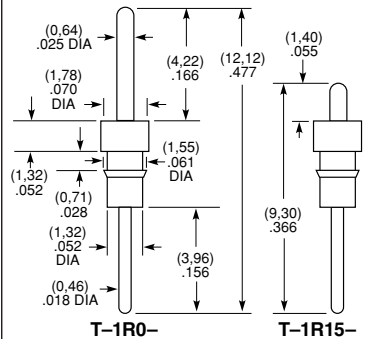
T-1R6- T-2R6- T-3R6-



Part No.	A TAIL	B HEAD	C OAL
T-1R6-	(2,74) .108	(0,51) .020	(7,62) .300
T-2R6-	(3,18) .125	(0,89) .035	(8,43) .332
T-3R6-	(0,89) .035	(0,76) .030	(5,97) .235

Material: Brass

T-1R0-, T-1R15-

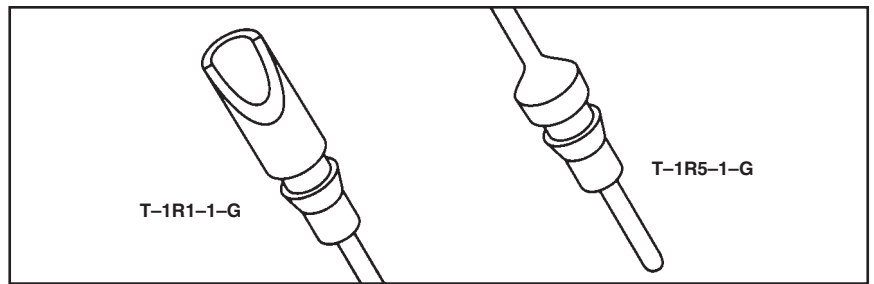


Material: Brass

Note:
Some sizes, styles and options are non-standard, non-returnable.

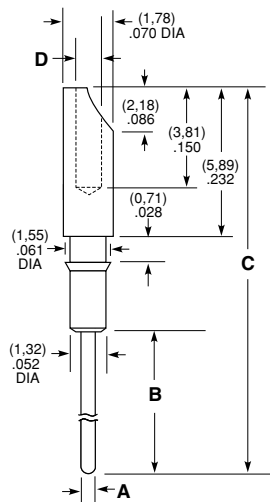
Due to technical progress, all designs, specifications and components are subject to change without notice.

WWW.SAMTEC.COM



MACHINED TERMINALS T, S SERIES

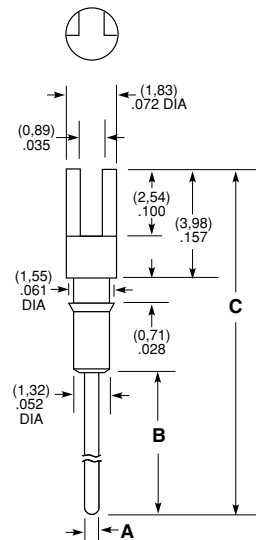
T-1R1- T-1R8-



Part No.	A DIA	B TAIL	C OAL	D DIA
T-1R1-	(0,46) .018	3,96 .156	(12,47) .491	(0,97) .038
T-1R8-1-	(0,64) .025			(0,97) .038
T-1R8-2-	(0,89) .035	(5,33) .210	(13,84) .545	(1,07) .042
T-1R8-3-	(1,14) .045			(0,97) .038

Material: Brass

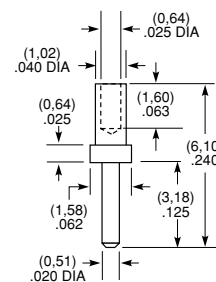
T-1R2- T-1R9-



Part No.	A DIA	B TAIL	C OAL
T-1R2-	(0,46) .018	(3,96) .156	(10,57) .416
T-1R9-1-	(0,64) .025		
T-1R9-2-	(0,89) .035	(5,33) .210	(11,94) .470
T-1R9-3-	(1,14) .045		

Material: Brass

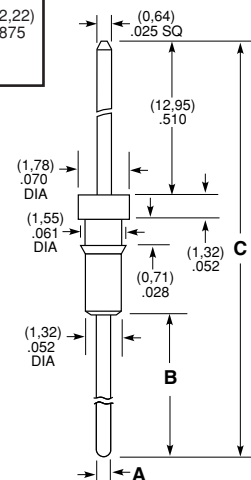
T-1R4-



Material: Brass

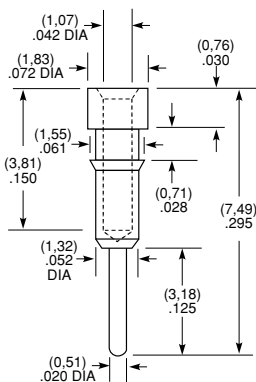
T-1S4-

Part No.	A DIA	B TAIL	C OAL
T-1S4-1-1-	(0,46) .018	(3,96) .156	20,85 .821
T-1S4-2-1-	(0,64) .025		
T-1S4-3-1-	(0,89) .035	(5,33) .210	(22,22) .875
T-1S4-4-1-	(1,14) .045		



Material: Brass

S-1P1-



Material: Brass

Due to technical progress, all designs, specifications and components are subject to change without notice.

WWW.SAMTEC.COM

Mouser Electronics

Authorized Distributor

Click to View Pricing, Inventory, Delivery & Lifecycle Information:

[Samtec:](#)

[T-1R4-T](#)