

(0.635 mm) .025"

QMS-PC, QMS-RF SERIES

HIGH-SPEED COMBO RF & POWER

SPECIFICATIONS

For complete specifications and recommended PCB layouts see www.samtec.com?QMS

Insulator Material:

Liquid Crystal Polymer
Terminal & Ground

Plane Material:

Phosphor Bronze

Plating:

Au over 50 μ" (1.27 μm) Ni

(Tin on Ground Plane Tail)

Current Rating:

Signal Contact:

2.6 A per pin

(2 pins powered)

Power Contact:

4.0 A per pin

(4 pins powered per end)

Ground Plane:

15.7 A per ground plane

(1 ground plane powered)

Voltage Rating:

300 VAC mated with QFS

Operating Temp:

-55 °C to +125 °C

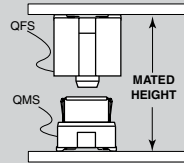
RoHS Compliant:

Yes

Board Mates:
QFS-PC, QFS-RA-PC,
QFS-RF

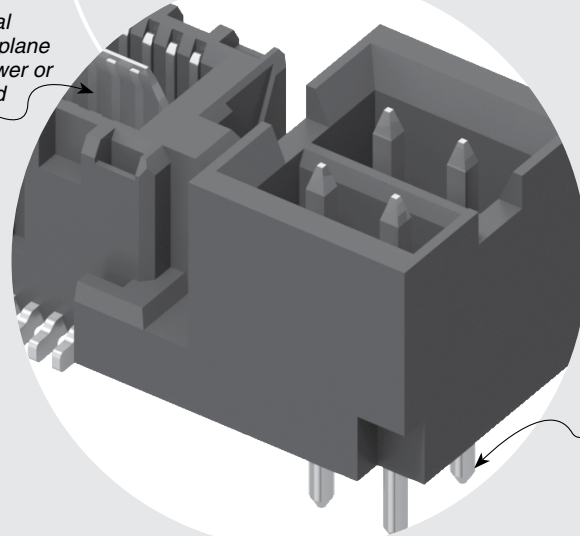
Integral
metal plane
for power or
ground

APPLICATION



QMS LEADSTYLE	MATED HEIGHT*
-05.75	(10.00) .394
-06.75	(11.00) .433

*Processing conditions will affect mated height. See SO Series for board space tolerances.



Choice of Power
and RF options

PROCESSING

Lead-Free Solderable:
Yes

SMT Lead Coplanarity:
(0.10 mm) .004" max (026-078)

Board Stacking:

For applications requiring more than two connectors per board, contact ipg@samtec.com

RECOGNITIONS

For complete scope of recognitions see www.samtec.com/quality



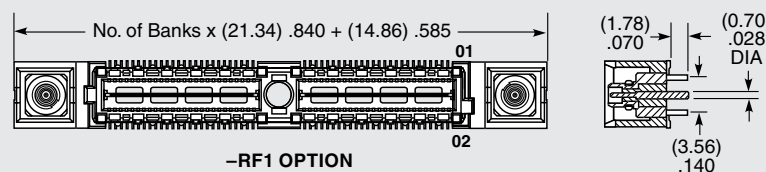
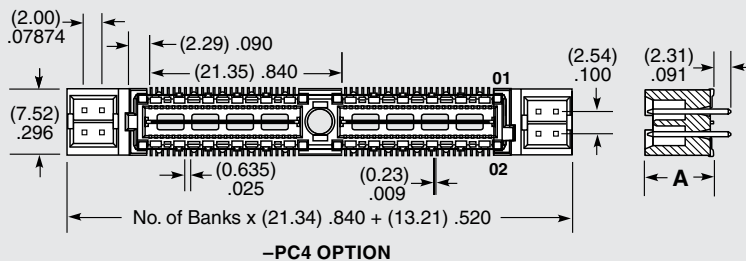
ALSO AVAILABLE (MOQ Required)

- Other platings
- Differential Pairs
- Retention Pins
- 8 Power Pins/End for (1.60 mm) 0.62" thick board
- 4 or 8 Power Pins/End for (2.36 mm) .093" thick board
- 2 RF Connectors/End
- Hot Pluggable

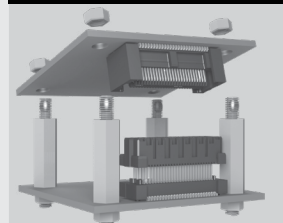
Note:
Some lengths, styles and options are non-standard, non-returnable.

QMS	NO. OF PINS PER ROW	LEAD STYLE	PLATING OPTION	D	END OPTION	"X"R
	-026, -052, -078 (52 total pins per bank)	Specify LEAD STYLE from chart	-L = 10 μ" (0.25 μm) Gold on Signal Pins and Ground Plane (Tin on Signal Pin tails, and Ground Plane tails)		-PC4 = 4 Power Pins per End for (1.60 mm) .062" thick Board (not available with -RF1) -RF1 = One RF Plug per End (-05.75 only, not available with -PC4)	-TR =Tape & Reel -FR = Full Reel Tape & Reel (must order max. quantity per reel; contact Samtec for quantity breaks)

LEAD STYLE	A
-05.75	(5.38) .212
-06.75	(6.35) .250



OTHER SOLUTIONS



See SO Series for precision machined standoffs.

Mouser Electronics

Authorized Distributor

Click to View Pricing, Inventory, Delivery & Lifecycle Information:

[Samtec:](#)

[QMS-078-01-S-D-EM2](#)