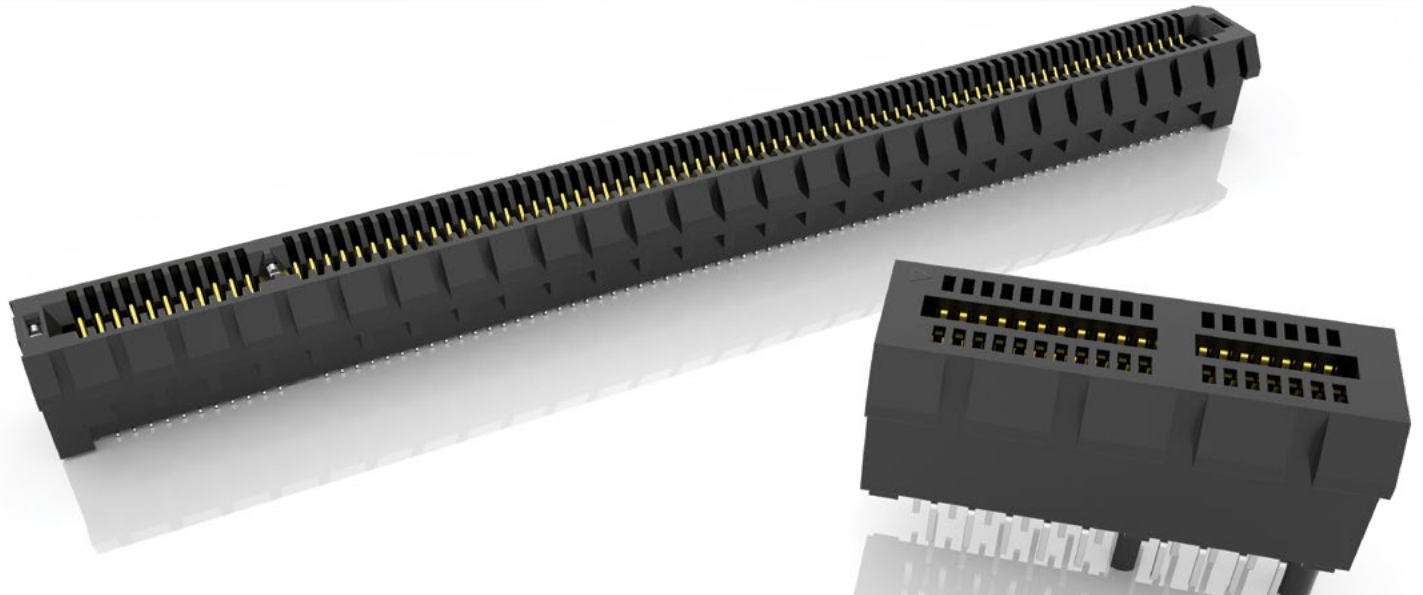


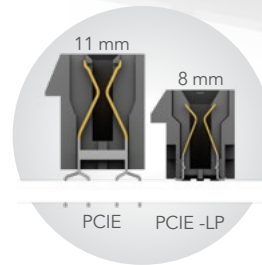
PCI EXPRESS® EDGE CARD SOCKETS

(1.00 mm) .0394" PITCH



FEATURES & BENEFITS

- 1.00 mm pitch
- Supports 1, 4, 8 and 16 PCI Express® links
- PCIe® 3.0 Solution (PCI-E)
- PCIe® 4.0 Solution with low-profile design for space savings (PCI-E-LP)
- PCIe® 4.0 with slim body design (PCI-E-G4)
- PCIe® 5.0 Solution with differential pair signaling (PCI-E-G5)
- Vertical, right-angle and edge mount
- Mates with .062" (1.60 mm) thick cards
- Alignment pin and weld tab options



PCI-E® 3.0 & 4.0
Edge Card
connectors



PCI-E® 4.0 slim body
socket with Edge Rate®
contacts (PCI-E-G4)

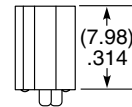
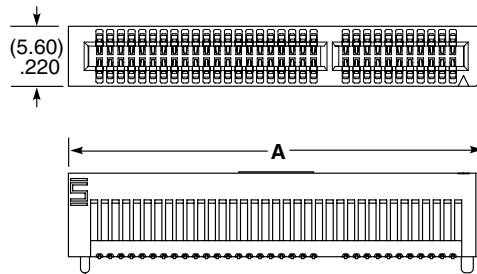
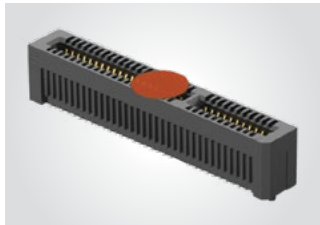
KEY SPECIFICATIONS

| SERIES | TOTAL PINS (LANES) | INSULATOR MATERIAL | CONTACT MATERIAL | OPERATING TEMP RANGE | CURRENT RATING | VOLTAGE RATING | PCI-E® COMPATIBILITY |
|----------|---|--|------------------|----------------------|----------------|----------------|----------------------|
| PCI-E | 36 (x1), 64 (x4), 98 (x8), 164 (x16) | -TH = Black Nylon -EMS2 & -TH = LCP | Phosphor Bronze | -55 °C to +125 °C | 2.4 A (2 pins) | 215 VAC | 3.0 |
| PCI-E-LP | 36 (x1), 64 (x4), 98 (x8), 164 (x16) | LCP | Phosphor Bronze | -55 °C to +125 °C | 2.1 A (2 pins) | 215 VAC | 4.0 |
| PCI-E-G4 | 36 (x1), 64 (x4), 98 (x8), 164 (x16) | LCP | Copper Alloy | -55 °C to +125 °C | 2.2 A (2 pins) | 300 VAC | 4.0 |
| PCI-E-G5 | 36 (x1), 64 (x4), 98 (x8), 164 (x16) | LCP | Copper Alloy | -55 °C to +125 °C | 3.2 A (2 pins) | 235 VAC | 5.0 |

(1.00 mm) .0394" PITCH • PCI EXPRESS® 4.0 SOCKET

| PCIE | G4 | NUMBER OF LANES | 01 | PLATING OPTION | DV | OPTION 1 | OPTION 2 | PACKAGING |
|------|----|--------------------|----|--|----|---|--|--|
| | | -01, -04, -08, -16 | | -F = Gold flash on contact, Matte Tin on tail -S = 30 μ" (0.76 μm) Gold on contact, Matte Tin on tail | | -A = Alignment Pin (Not available with -WT) -WT = Weld Tab (Not available with -A) | -K = (7.00 mm) .275" DIA Polyimide Pick & Place Pad | (For -16 lanes only leave blank for Tray Packaging) -TR = Tape & Reel (Available with -01, -04, -08 lanes only) -FR = Full Reel Tape & Reel (must order maximum quantity per reel; contact Samtec for quantity breaks) (Available with -01, -04, -08 lanes only) |

PCIE-G4
Card Mates:
(1.60 mm)
.062" card



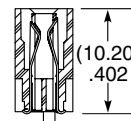
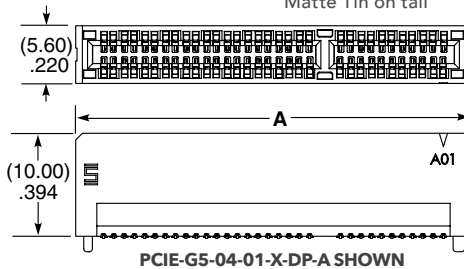
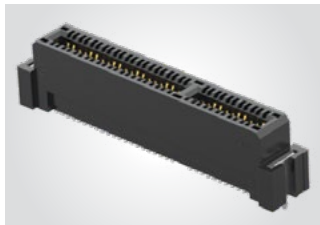
| NUMBER OF LANES | A |
|-----------------|---------------|
| -01 | (26.70) 1.051 |
| -04 | (40.70) 1.602 |
| -08 | (57.70) 2.272 |
| -16 | (90.70) 3.571 |

View complete specifications at: samtec.com?PCIE-G4

(1.00 mm) .0394" PITCH • PCI EXPRESS® 5.0 SOCKET

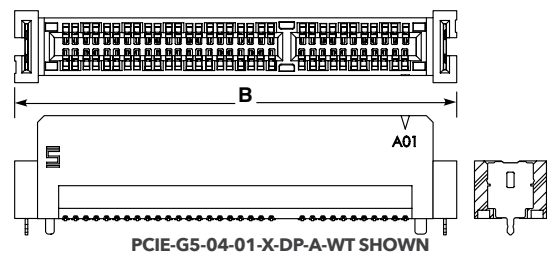
| PCIE | G5 | NUMBER OF LANES | 01 | PLATING OPTION | DP | A | OPTION |
|------|----|--------------------|----|--|----|---|-------------------|
| | | -01, -04, -08, -16 | | -F = Gold flash on contact, Matte Tin on tail -S = 30 μ" (0.76 μm) Gold on contact, Matte Tin on tail | | | -WT = Weld Tab |

PCIE-G5
Card Mates:
(1.60 mm)
.062" card



| NUMBER OF LANES | A | B (with -WT) |
|-----------------|---------------|---------------|
| -01 | (24.40) .961 | (26.70) 1.051 |
| -04 | (38.40) 1.512 | (40.70) 1.602 |
| -08 | (55.40) 2.181 | (57.70) 2.272 |
| -16 | (88.40) 3.480 | (90.70) 3.571 |

PRELIMINARY



PCI-SIG®, PCI Express® and the PCIe® design marks are registered trademarks and/or service marks of PCI-SIG.

Note:
Some lengths, styles and options are non-standard, non-returnable.

View complete specifications at: samtec.com?PCIE-G5

Mouser Electronics

Authorized Distributor

Click to View Pricing, Inventory, Delivery & Lifecycle Information:

[Samtec:](#)

[PCIE-G4-01-01-S-DV-A-K-TR](#)