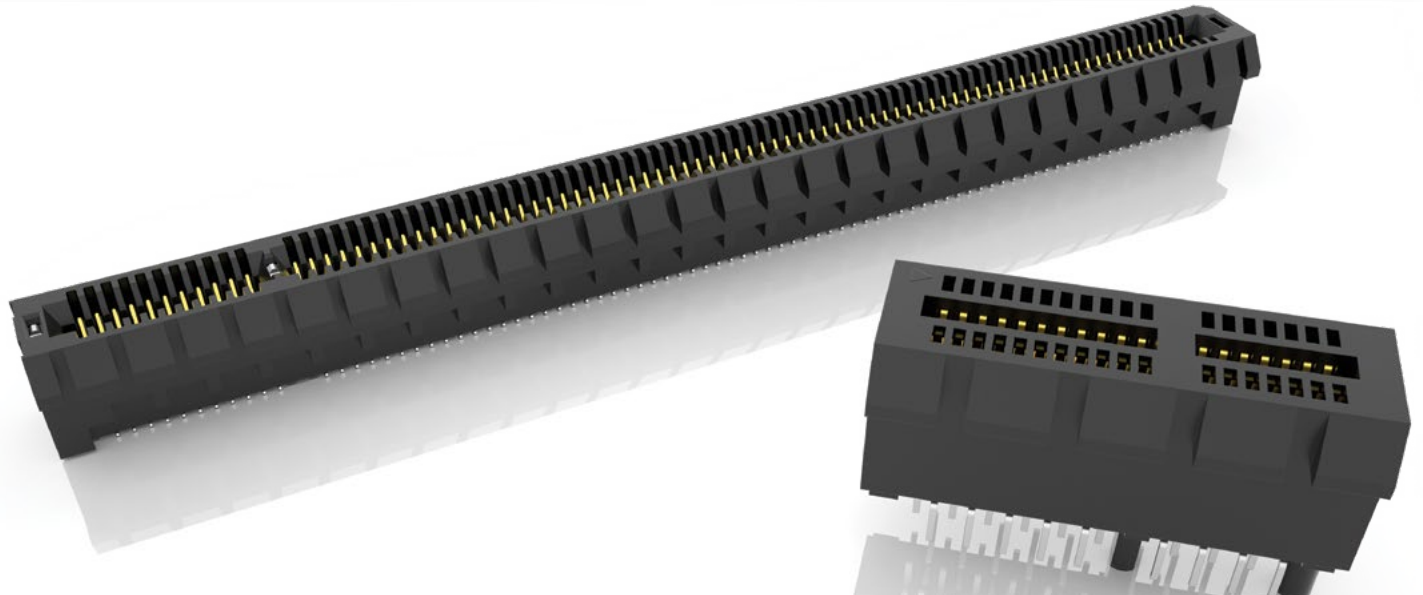


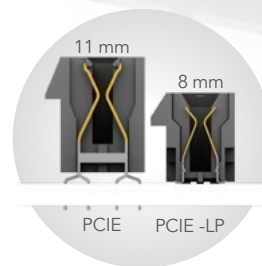
# PCI EXPRESS® EDGE CARD SOCKETS

(1.00 mm) .0394" PITCH



## FEATURES & BENEFITS

- 1.00 mm pitch
- Supports 1, 4, 8 and 16 PCI Express® links
- PCIe® 3.0 Solution (PCIe)
- PCIe® 4.0 Solution with low-profile design for space savings (PCIe-LP)
- PCIe® 4.0 with slim body design (PCIe-G4)
- PCIe® 5.0 Solution with differential pair signaling (PCIe-G5)
- Vertical, right-angle and edge mount
- Mates with .062" (1.60 mm) thick cards
- Alignment pin and weld tab options



PCIe® 3.0 & 4.0  
Edge Card  
connectors



PCIe® 4.0 slim body  
socket with Edge Rate®  
contacts (PCIe-G4)

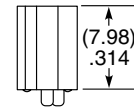
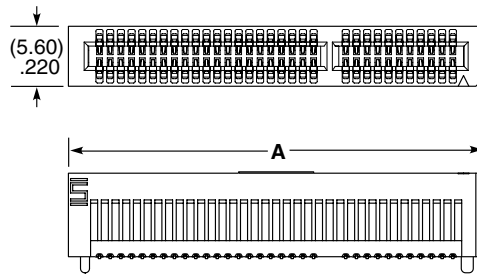
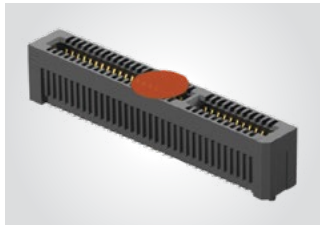
## KEY SPECIFICATIONS

SERIES	TOTAL PINS (LANES)	INSULATOR MATERIAL	CONTACT MATERIAL	OPERATING TEMP RANGE	CURRENT RATING	VOLTAGE RATING	PCIe® COMPATIBILITY
PCIe	36 (x1), 64 (x4), 98 (x8), 164 (x16)	-TH = Black Nylon -EMS2 & -TH = LCP	Phosphor Bronze	-55 °C to +125 °C	2.4 A (2 pins)	215 VAC	3.0
PCIe-LP	36 (x1), 64 (x4), 98 (x8), 164 (x16)	LCP	Phosphor Bronze	-55 °C to +125 °C	2.1 A (2 pins)	215 VAC	4.0
PCIe-G4	36 (x1), 64 (x4), 98 (x8), 164 (x16)	LCP	Copper Alloy	-55 °C to +125 °C	2.2 A (2 pins)	300 VAC	4.0
PCIe-G5	36 (x1), 64 (x4), 98 (x8), 164 (x16)	LCP	Copper Alloy	-55 °C to +125 °C	3.2 A (2 pins)	235 VAC	5.0

**(1.00 mm) .0394" PITCH • PCI EXPRESS® 4.0 SOCKET**

PCIE	G4	NUMBER OF LANES	01	PLATING OPTION	DV	OPTION 1	OPTION 2	PACKAGING
		-01, -04, -08, -16		-F = Gold flash on contact, Matte Tin on tail  -S = 30 μ" (0.76 μm) Gold on contact, Matte Tin on tail		-A = Alignment Pin (Not available with -WT)  -WT = Weld Tab (Not available with -A)	-K = (7.00 mm) .275" DIA Polyimide Pick & Place Pad	(For -16 lanes only leave blank for Tray Packaging)  -TR = Tape & Reel (Available with -01, -04, -08 lanes only)  -FR = Full Reel Tape & Reel (must order maximum quantity per reel; contact Samtec for quantity breaks) (Available with -01, -04, -08 lanes only)

**PCIE-G4**  
Card Mates:  
(1.60 mm)  
.062" card



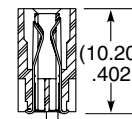
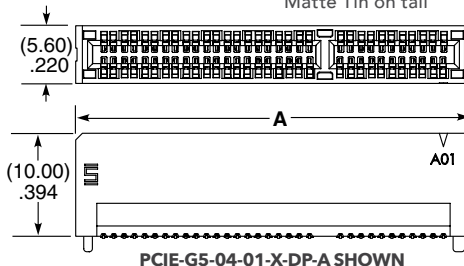
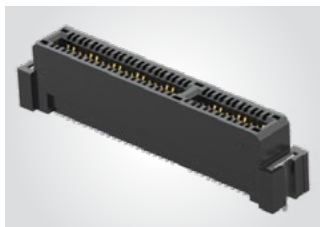
NUMBER OF LANES	A
-01	(26.70) 1.051
-04	(40.70) 1.602
-08	(57.70) 2.272
-16	(90.70) 3.571

View complete specifications at: [samtec.com?PCIE-G4](http://samtec.com?PCIE-G4)

**(1.00 mm) .0394" PITCH • PCI EXPRESS® 5.0 SOCKET**

PCIE	G5	NUMBER OF LANES	01	PLATING OPTION	DP	A	OPTION
		-01, -04, -08, -16		-F = Gold flash on contact, Matte Tin on tail  -S = 30 μ" (0.76 μm) Gold on contact, Matte Tin on tail			-WT = Weld Tab

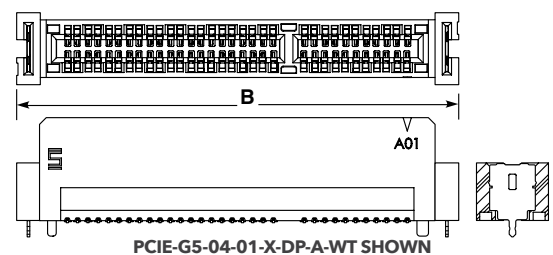
**PCIE-G5**  
Card Mates:  
(1.60 mm)  
.062" card



NUMBER OF LANES	A	B (with -WT)
-01	(24.40) .961	(26.70) 1.051
-04	(38.40) 1.512	(40.70) 1.602
-08	(55.40) 2.181	(57.70) 2.272
-16	(88.40) 3.480	(90.70) 3.571

PCIE-G5-04-01-X-DP-A SHOWN

PRELIMINARY



PCIE-G5-04-01-X-DP-A-WT SHOWN

PCI-SIG®, PCI Express® and the PCIe® design marks are registered trademarks and/or service marks of PCI-SIG.

**Note:**  
Some lengths, styles and options are non-standard, non-returnable.

View complete specifications at: [samtec.com?PCIE-G5](http://samtec.com?PCIE-G5)

# Mouser Electronics

Authorized Distributor

Click to View Pricing, Inventory, Delivery & Lifecycle Information:

[Samtec:](#)

[PCIE-G4-16-01-F-DV-WT-K](#)