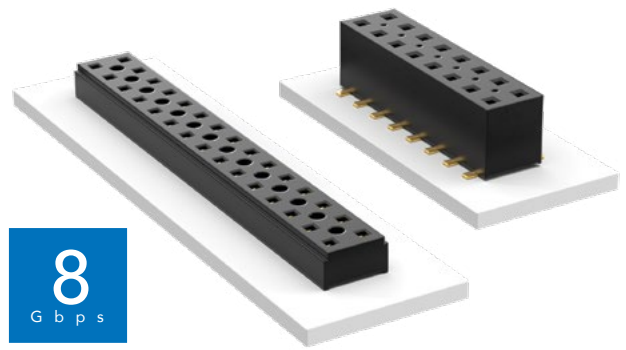


# COST-EFFECTIVE & DUAL WIPE SOCKETS

(2.00 mm) .0787" PITCH • TLE/CLT SERIES



## TLE

### Mates:

TMMH, TMM, MTMM,  
MMT, TW, LTMM, ZLTMM,  
TCMD, TSH

## CLT

### Mates:

TMM, TMMH, MTMM,  
MMT, TW, TSH

## SPECIFICATIONS

### TLE

#### Insulator Material:

Black Liquid Crystal Polymer

#### Contact Material:

Phosphor Bronze

#### Plating:

Au over 50  $\mu$ " (1.27  $\mu$ m) Ni

#### Current Rating (TLE/TMMH):

3.2 A per pin

(2 pins powered)

#### Operating Temp Range:

-55 °C to +125 °C

#### Insertion Depth:

(2.08 mm) .082" to

(4.37 mm) .172" with

(0.38 mm) .015" wipe,

pass-through, or

(3.35 mm) .132" min

for bottom entry

### CLT

Same as TLE except:

#### Plating:

Sn or Au over 50  $\mu$ " (1.27  $\mu$ m) Ni

#### Current Rating (TMMH/CLT):

4.1 A per pin

(2 pins powered)

#### Insertion Depth:

Top Entry=

(1.40 mm) .055" minimum

Bottom Entry=

(2.57 mm) .101" minimum

(add board thickness for

correct post OAL)

#### Max Cycles:

100 with 10  $\mu$ " (0.25  $\mu$ m) Au

## PROCESSING

### TLE

#### Lead-Free Solderable:

Yes

#### SMT Lead Coplanarity:

(0.10 mm) .004" max (02-26)

(0.15 mm) .006" max (27-50)\*

\*(.004" stencil solution

may be available; contact

IPG@samtec.com)

### CLT

Same as TLE except:

#### SMT Lead Coplanarity:

(0.10 mm) .004" max (02-25)

(0.15 mm) .006" max (26-34)\*

(0.20 mm) .008" max (35-50)\*

\*(.004" stencil solution

may be available; contact

IPG@samtec.com)

#### Note:

Some lengths, styles and  
options are non-standard,  
non-returnable.

TLE	- 1	NO. PINS PER ROW	- 01	PLATING OPTION	- DV	OPTION
<b>TIGER BEAM CONTACT</b>		02 thru 50		-G = 10 $\mu$ " (0.25 $\mu$ m) Gold		-A = Alignment Pin (3 positions minimum)  -K = (5.00 mm) .197" DIA Polyimide Film Pick & Place Pad (3 positions minimum)  -P = Metal Pick & Place Pad (4 positions minimum)  -TR = Tape & Reel Packaging (2-37 positions only)  -FR = Full Reel Tape & Reel (must order maximum quantity per reel; contact Samtec for quantity breaks) (2-37 positions only)

CLT	- 1	NO. PINS PER ROW	LEAD STYLE	PLATING OPTION	- D	OTHER OPTIONS
<b>TIGER CLAW CONTACT</b>		02 thru 50	-01 = Through-hole  -02 = Surface Mount  -03 = Through-hole	-F = Gold flash on contact, Matte Tin on tail  -L = 10 $\mu$ " (0.25 $\mu$ m) Gold on contact, Matte Tin on tail  -G = 10 $\mu$ " (0.25 $\mu$ m) Gold on contact, Gold flash on tail		All options require Style -02  -BE = Bottom Entry (Required for bottom entry applications)  -A = Alignment Pin (3 positions minimum) Metal or plastic at Samtec's discretion  -K = (5.00 mm) .197" DIA Polyimide Film Pick & Place Pad (04 thru 50 only)  -P = Pick & Place Pad (4 positions minimum) (Not always necessary for auto placement.)  -TR = Tape & Reel (36 positions max)  -FR = Full Reel Tape & Reel (must order maximum quantity per reel; contact Samtec for quantity breaks) (36 positions max)
<b>ALSO AVAILABLE</b>						

# Mouser Electronics

Authorized Distributor

Click to View Pricing, Inventory, Delivery & Lifecycle Information:

[Samtec:](#)

[CLT-124-02-S-D-BE-A](#)