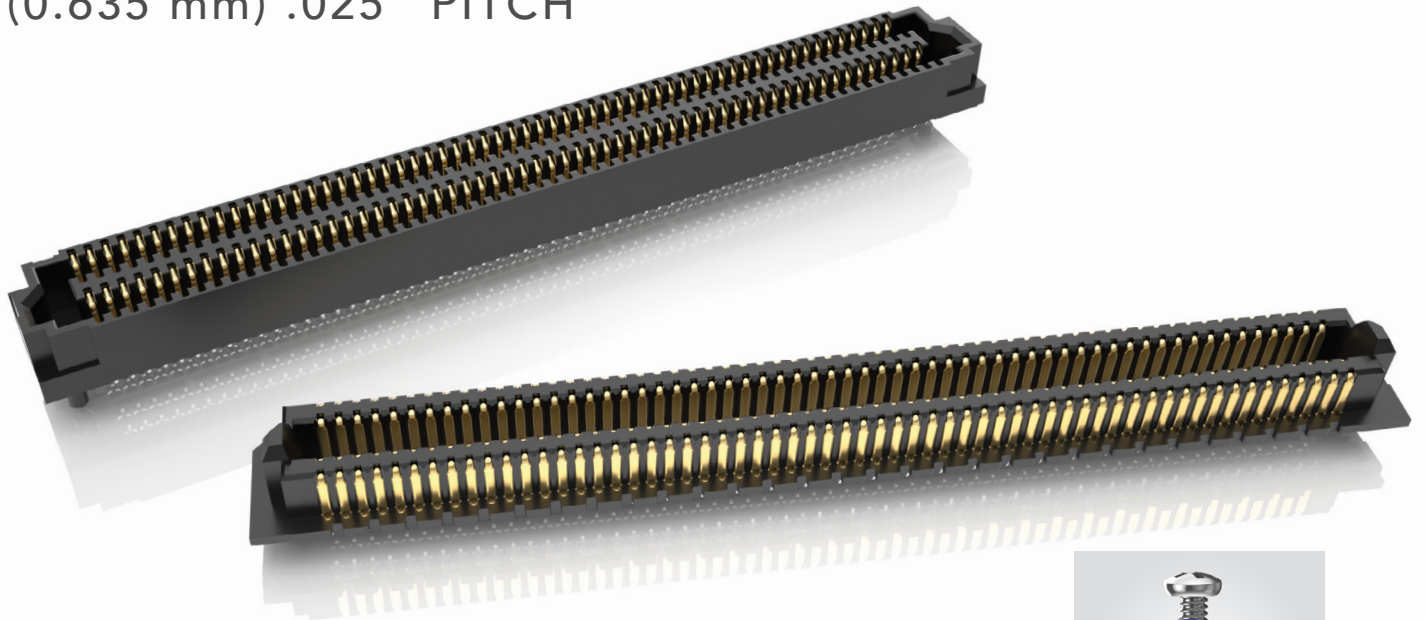


ACCELERATE[®] HD

HIGH-DENSITY SLIM BODY ARRAYS

(0.635 mm) .025" PITCH



FEATURES & BENEFITS

- Up to 400 positions in a 4-row design
- 5 mm, 7 mm, 9 mm, 10 mm, 11 mm, 12 mm, 14 mm & 16 mm stack heights
- Slim 5 mm width body design
- Edge Rate[®] contact system optimized for signal integrity performance
- Open-pin-field for grounding and routing flexibility
- Supports 64 Gbps PAM4 (32 Gbps NRZ) applications
- PCIe[®] 6.0/CXL[®] 3.1 capable

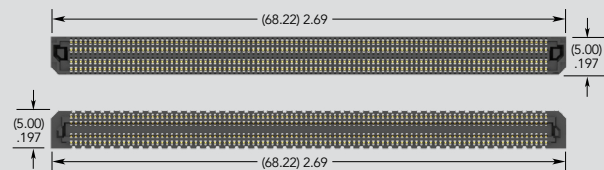
PAM4

64
G b p s



SureWare[™] ultra rugged guide post standoffs available (GPSO)

HIGHER DENSITY THAN PREVIOUS GENERATION STRIPS



ADM6/ADF6 Series (400 total positions)

KEY SPECIFICATIONS (ADM6/ADF6)

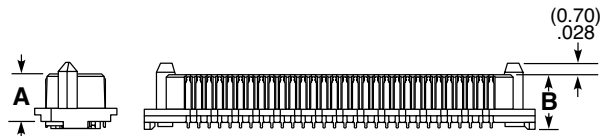
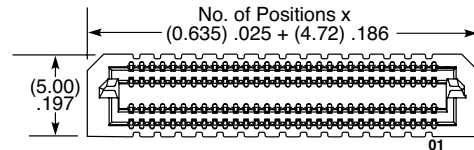
PITCH	TOTAL POSITIONS	INSULATOR MATERIAL	CONTACT MATERIAL	PLATING	OPERATING TEMP RANGE	CURRENT RATING	WORKING VOLTAGE	LEAD-FREE SOLDERABLE
(0.635 mm) .025"	40 - 400	Black LCP	Copper Alloy	Au or Sn over 50 μ" (1.27 μm) Ni	-55 °C to +125 °C	1.34 A per pin (4 pins powered)	155 VAC/219 VDC	Yes

PCI-SIG[®], PCI Express[®] and the PCIe[®] design marks are registered trademarks and/or service marks of PCI-SIG.

(0.635 mm) .025" PITCH • SLIM BODY OPEN-PIN-FIELD ARRAYS

SERIES	NO. OF POSITIONS	LEAD STYLE	PLATING OPTION	NO. OF ROWS	0	OPTION	"X"R
ADM6 Terminal	-10, -20, -30, -40, -50, -60, (per row)	-01.5 = 1.5 mm (ADM6 only)	-L = 10 μ" (0.25 μm) Gold on contact area, Matte Tin on tail	-4 = Four Rows		(Leave blank for no alignment pin)	-TR = Tape & Reel
ADF6 Socket	-70, -80, -90, -100 (ADF6-03.5 & ADM6-01.5, -03.5 & -06.5 lead styles only)	-03.5 = 3.5 mm	-S = 30 μ" (0.76 μm) Gold on contact area, Matte Tin on tail			-A = Alignment Pin	-FR = Full Reel Tape & Reel (must order max. quantity per reel; contact Samtec for quantity breaks)
		-06.5 = 6.5 mm (ADM6 only)	-STL = 30 μ" (0.76 μm) Gold on contact area, Tin/Lead on solder tail (ADM6 -01.5 lead style & ADF6 -03.5 lead style only)				
		-07.5 = 7.5 mm (ADF6 only)					
		-08.5 = 8.5 mm (ADM6 only)					

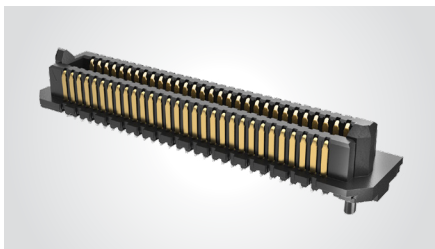
-08.5
PRELIMINARY



ADM6

Board Mates:
ADF6

Standoffs:
JSO, GPSO



LEAD STYLE	A	B
-01.5	(2.90) .114	(3.32) .131
-03.5	(4.90) .193	(5.32) .209
-06.5	(7.90) .311	(8.32) .328
-08.5	(9.90) .390	(10.32) .406

View complete specifications at: samtec.com?ADM6

MATED HEIGHTS *

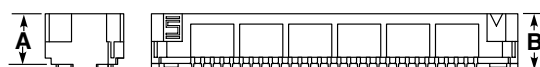
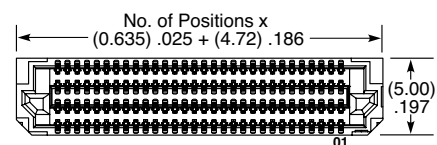
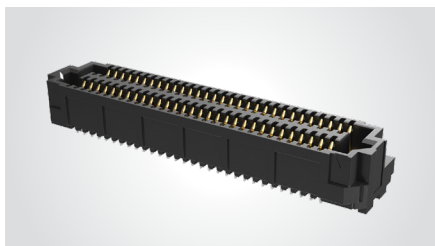
ADF6 LEAD STYLE	ADM6 LEAD STYLE			
	-01.5	-03.5	-06.5	-08.5
-03.5	(5 mm) .197"	(7 mm) .276"	(10 mm) .394"	(12 mm) .472"
-07.5	(9 mm) .354"	(11 mm) .433"	(14 mm) .551"	(16 mm) .630"

* Processing conditions will affect mated height.

ADF6

Board Mates:
ADM6

Standoffs:
JSO, GPSO



LEAD STYLE	A	B
-03.5	(3.23) .127	(3.65) .144
-07.5	(7.23) .285	(7.65) .301

Notes:

Some sizes, styles and options are non-standard, non-returnable

View complete specifications at: samtec.com?ADF6

Mouser Electronics

Authorized Distributor

Click to View Pricing, Inventory, Delivery & Lifecycle Information:

[Samtec:](#)

[ADM6-30-1.5-L-4-2-A](#) [ADM6-20-1.5-L-4-2-A](#) [ADM6-50-1.5-L-4-2-A](#) [ADM6-60-1.5-L-4-2-A](#) [ADM6-10-1.5-L-4-2-A](#)
[ADM6-40-1.5-L-4-2-A](#)