

DESIGNED & DIMENSIONED
IN MILLIMETERS [INCHES]

SMB7H-P-C-XX-RA-CA3

GENDER
-P: PLUG

TERMINATION
-CA3: CABLE (RG179)

TYPE
-C: CABLE

ORIENTATION
-RA: RIGHT ANGLE

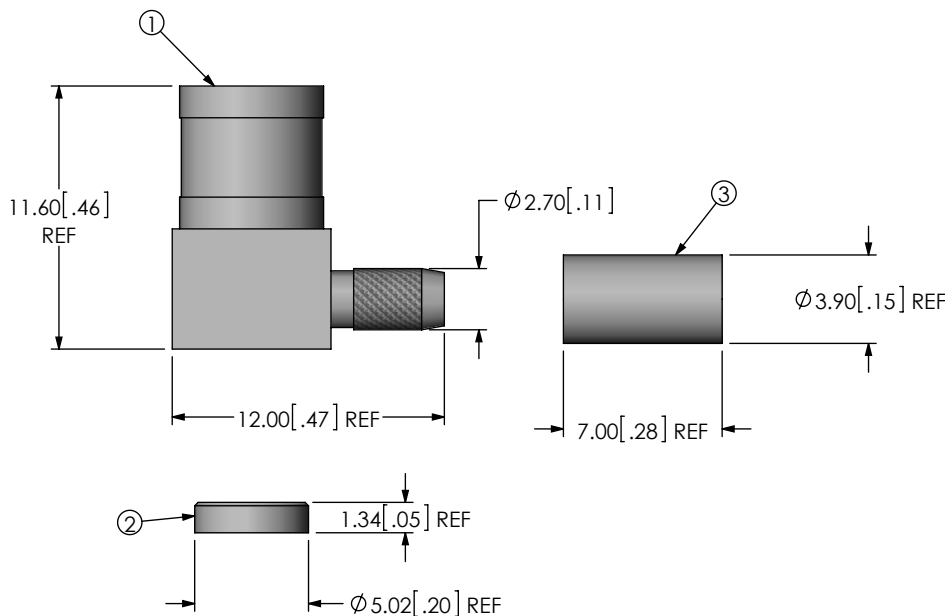
PLATING SPECIFICATION

-HN: 30µ" GOLD CENTER CONTACT,
3µ" GOLD OUTER CONTACT,
100µ" NICKEL REMAINING PARTS
-HF: 30µ" GOLD CENTER CONTACT,
3µ" GOLD OUTER CONTACT,
3µ" GOLD REMAINING PARTS
*-H: 30µ" GOLD CENTER CONTACT,
3µ" GOLD OUTER CONTACT,
3µ" GOLD REMAINING PARTS
(SEE TABLE 1)

(*=EXISTING CUSTOMER ONLY)


TABLE 1				
ITEM	COMPONENT	-HN	-HF	*-H
1	SUB ASSEMBLY	SUB-SMB7H-P-C-HN-RA-CA3	SUB-SMB7H-P-C-H-RA-CA3	SUB-SMB7H-P-C-H-RA-CA3
2	CAP	SMB7-CAP-001-N	SMB7-CAP-001-F	SMB7-CAP-001-F
3	FERRULE	MCX-FER-001-N	MCX-FER-001-F	MCX-FER-001-F

DO NOT
SCALE FROM
THIS PRINT

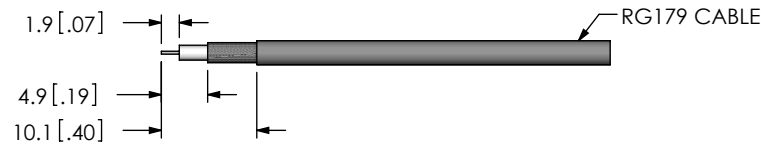


NOTES:

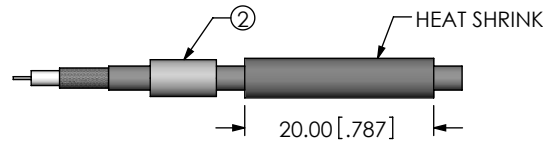
1. NOTE DELETED.
2. NOTE DELETED.
3. NOTE DELETED.
4. NOTE DELETED.
5. PRODUCT TO BE BULK PACKAGED PER PACKAGING STANDARD CO-RF-WI-3040-M.
6. NOTE DELETED.
7. NOTE DELETED.
8. NOTE DELETED.

<p>UNLESS OTHERWISE SPECIFIED, DIMENSIONS ARE IN MILLIMETERS [INCHES]. TOLERANCES ARE:</p> <p>DECIMALS ANGLES</p> <p>.X: ±0.3 [.01] 2°</p> <p>.XX: ±0.13 [.005]</p> <p>.XXX: ±0.051 [.0020]</p>	<p>PROPRIETARY NOTE</p> <p>THIS DOCUMENT CONTAINS CONFIDENTIAL AND PROPRIETARY INFORMATION AND ALL DESIGN, MANUFACTURING, REPRODUCTION, USE, PATENT RIGHTS AND SALES RIGHTS ARE EXPRESSLY RESERVED BY SAMTEC, INC. THIS DOCUMENT SHALL NOT BE DISCLOSED, IN WHOLE OR PART, TO ANY UNAUTHORIZED PERSON OR ENTITY NOR REPRODUCED, TRANSFERRED OR INCORPORATED IN ANY OTHER PROJECT IN ANY MANNER WITHOUT THE EXPRESS WRITTEN CONSENT OF SAMTEC, INC.</p>	 <p>520 PARK EAST BLVD, NEW ALBANY, IN 47150 PHONE: 812-944-6733 FAX: 812-948-5047 e-Mail: info@SAMTEC.com code 55322</p>
<p>BY: G. HERMAN 03/24/2008</p>		<p>SHEET 1 OF 2</p>

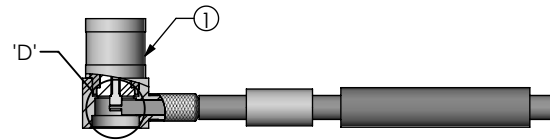
IN-PROCESS 1
STRIP CABLE AND TIN INNER CONDUCTOR



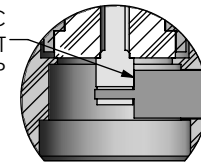
IN-PROCESS 2
ADD HEAT SHRINK TUBING AND FERRULE



IN-PROCESS 3
FLARE SHIELD & ADD SUB ASSEMBLY

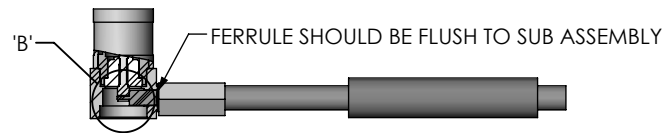


END OF CABLE DIELECTRIC
SHOULD SEAT AGAINST
CONTACT CUP

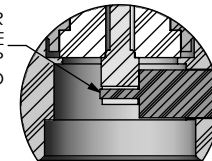


DETAIL 'D'

IN-PROCESS 4
CRIMP FERRULE
(USE RF CRIMP HAND TOOL #CAT-RF-FER-01,
AND .128" DIE SIZE)

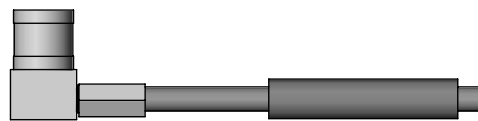


CABLE CENTER CONDUCTOR
SHOULD NOT PROTRUDE
OUTSIDE CONTACT CUP
AFTER FERRULE IS CRIMPED

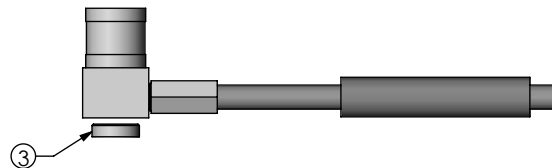


DETAIL 'B'

IN-PROCESS 5
SOLDER SIGNAL SOCKET



IN-PROCESS 6
PRESS CAP WITH CHAMFERED EDGE INWARDS



IN-PROCESS 7
ATTACH HEAT SHRINK



PROPRIETARY NOTE
THIS DOCUMENT CONTAINS CONFIDENTIAL AND PROPRIETARY INFORMATION AND ALL DESIGN, MANUFACTURING, REPRODUCTION, USE, PATENT RIGHTS AND SALES RIGHTS ARE EXPRESSLY RESERVED BY SAMTEC, INC. THIS DOCUMENT SHALL NOT BE DISCLOSED, IN WHOLE OR PART, TO ANY UNAUTHORIZED PERSON OR ENTITY NOR REPRODUCED, TRANSFERRED OR INCORPORATED IN ANY OTHER PROJECT IN ANY MANNER WITHOUT THE EXPRESS WRITTEN CONSENT OF SAMTEC, INC.



520 PARK EAST BLVD, NEW ALBANY, IN 47150
PHONE: 812-944-6733 FAX: 812-948-5047
e-Mail info@SAMTEC.com code 55322

DO NOT SCALE DRAWING

SHEET SCALE: 1.25:1

DESCRIPTION:
TRUE 75 OHM, SMB RIGHT ANGLE PLUG, RG179

DWG. NO.
SMB7H-P-C-XX-RA-CA3

BY: G. HERMAN 03/24/2008 SHEET 2 OF 2

Mouser Electronics

Authorized Distributor

Click to View Pricing, Inventory, Delivery & Lifecycle Information:

[Samtec:](#)

[SMB7H-P-C-HN-RA-CA3](#)