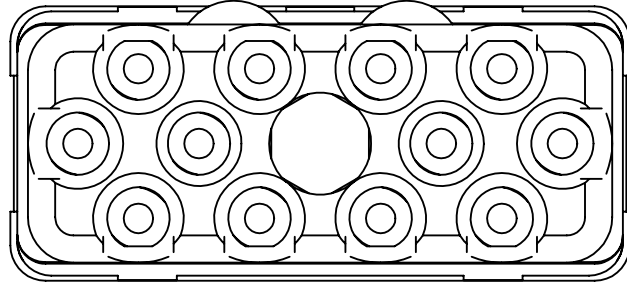


Series
EPXB

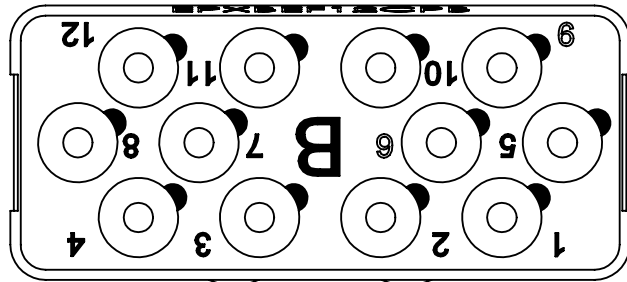
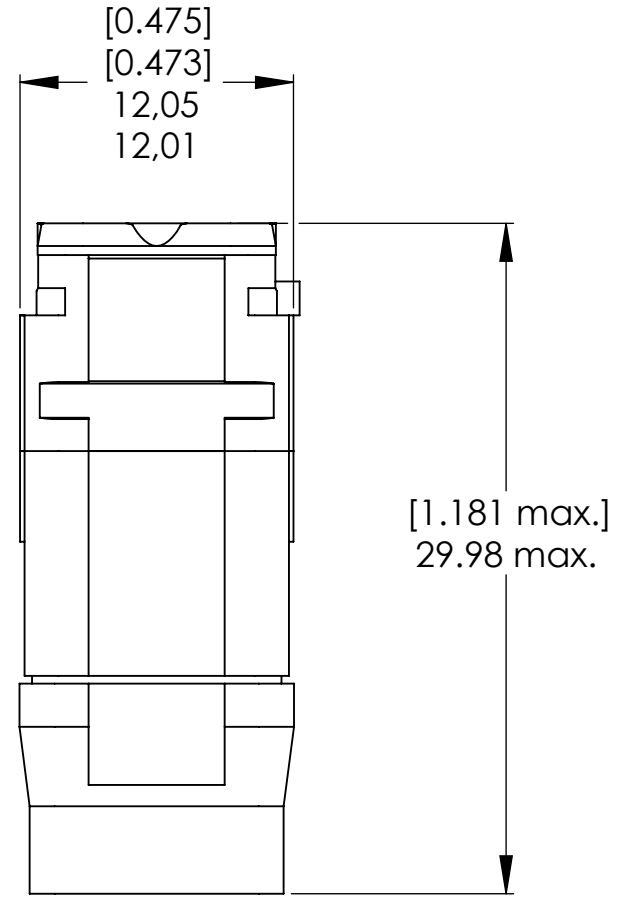
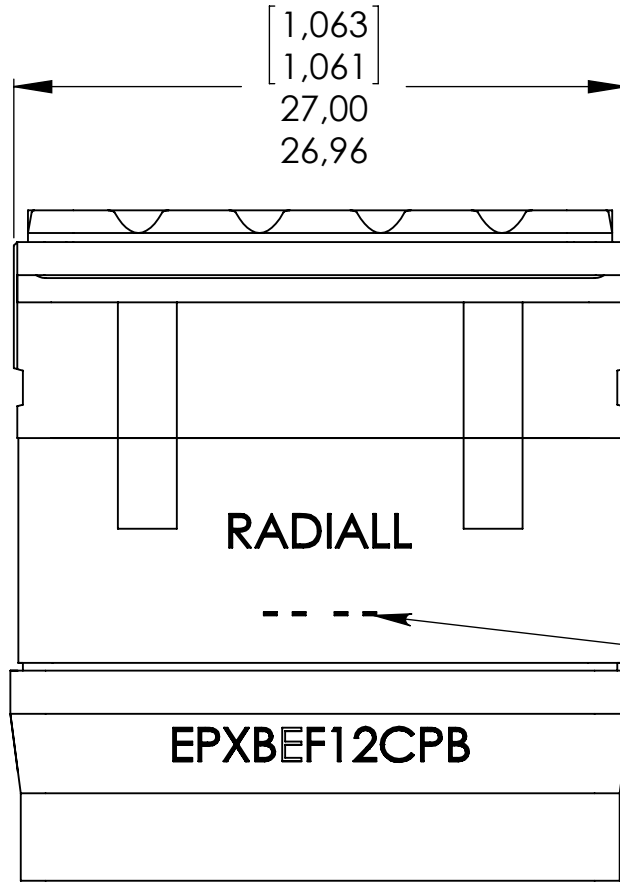
ENVIRONMENTAL PIN INSERT 'B' KEYING
12 CAVITIES FOR ML or MT LuxCis OPTICAL CONTACTS

Issue:
Aug. 10,09

Page
1/1



Front view
Mating face



Rear view
Cavity identification

MATERIAL:

INSERT: Fiberglass filled thermosetting
RETENTION CLIP: Berillium copper
REAR GROMMET & INTERFACIAL SEAL: Fluorosilicone elastomer

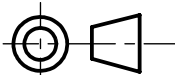
NOTES:

Environmental Insert 12 cavities for:
ML/MT (mono-key) LuxCis optical contact.

Insert delivered without contact.

Refer to LuxCis maintenance document 503 08 590 section "Advices / recommendations" before starting to use this product.

DIMENSIONS : mm (inch are given for information only)



CREATION	Aug. 10,09	Add "Refer to LuxCis maintenance to use this product"	SURAUULT	PESSARD
	Nov. 05,08	Title updated "socket insert" became "pin insert"	SURAUULT	PESSARD
PEN:	April 03,08	Front view updated	SURAUULT	PESSARD
	Mar. 11,08	Rear marking updated	SURAUULT	PESSARD
NOM: HUGER D.	Apr 17,07	30.00.29.20 --> 28.98 max- 0.474--> 0.475 sup. cavities or environmental insert for HL/HT (hexagonal) LuxCis optical contact- TITLE UPDATED	SURAUULT	PESSARD
DATE: May 02 2006		sup. insert material: High grade thermoplastic	SURAUULT	PESSARD
APPR.: PESSARD M.	Issue	Revisions	Name	Approved

Confidential information not to be disclosed to third parties without Radiall approval. This information is given as an indication. In the continual goal to improve our products, we reserve the right to make any modifications judged necessary.

4112_9311

Mouser Electronics

Authorized Distributor

Click to View Pricing, Inventory, Delivery & Lifecycle Information:

Radial:

[EPXBEF12CPB](#)