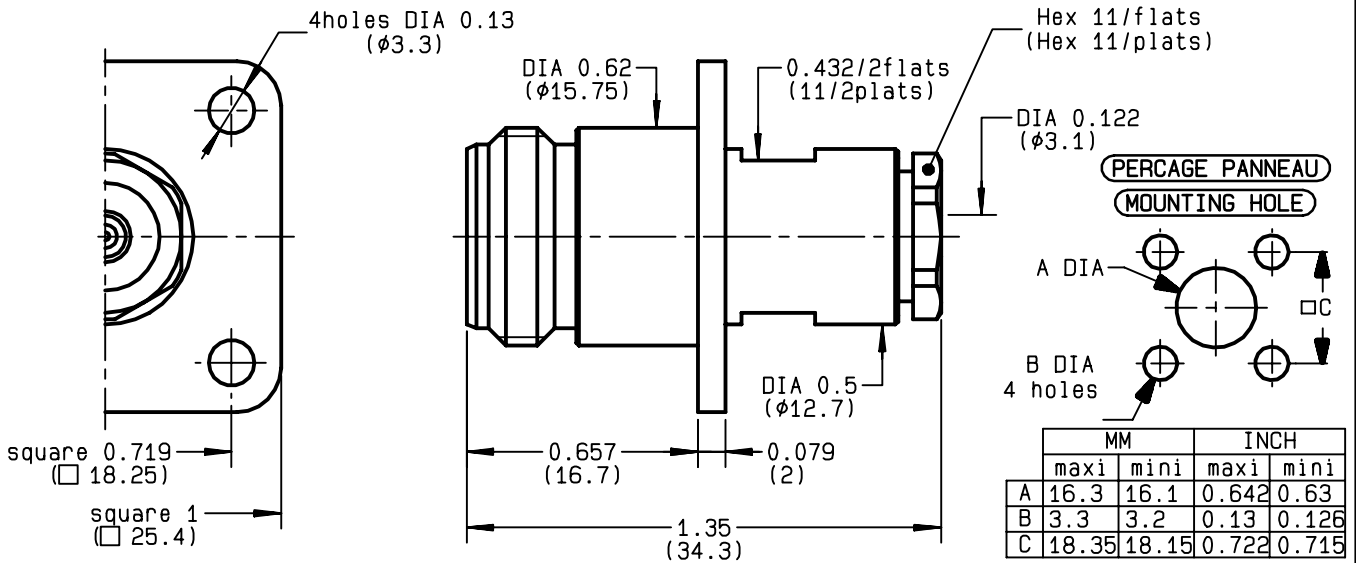


**STRAIGHT SQUARE FLANGE JACK  
CLAMP TYPE - CABLE 2.6/50 S+D**

**R161.252.000**  
**SERIES N**



|                                 |                                       |
|---------------------------------|---------------------------------------|
| NOMINAL IMPEDANCE               | <b>50</b> Ω                           |
| FREQUENCY RANGE                 | <b>0-11</b> GHz                       |
| TEMPERATURE RATING              | <b>-55/+155</b> °C                    |
| V.S.W.R                         | <b>1.10</b> + <b>.06</b> x F(GHz)Maxi |
| RF INSERTION LOSS               | <b>0.048</b> √F(GHz) dB Maxi          |
| VOLTAGE RATING                  | <b>250</b> Veff Maxi                  |
| DIELECTRIC WITHSTANDING VOLTAGE | <b>750</b> Veff Mini                  |
| INSULATION RESISTANCE           | <b>5000</b> MΩMini                    |
| HERMETIC SEAL                   | <b>NA</b> Atm.cm <sup>3</sup> /s      |
| LEAKAGE (pressurized only)      | <b>NA</b>                             |
| MECHANICAL DURABILITY           | <b>500</b> Cycles                     |
| WEIGHT                          | <b>39.7</b> gr                        |
| SPECIFICATION                   |                                       |

CABLES : **K02252D**  
**K02252D SPL**  
**KX 22A**  
**RD 316**  
**RG 188**  
**RG 316**

OTHERS CHARACTERISTICS

|                            |                     |
|----------------------------|---------------------|
| CABLE RETENTION            | <b>40</b> N Mini    |
| CENTER CONTACT RETENTION   |                     |
| Axial force - mating end   | <b>27</b> N Mini    |
| Axial force - opposite end | <b>27</b> N Mini    |
| Torque                     | <b>NA</b> cm.N Mini |
| RECOMMENDED TORQUES        |                     |
| Mating                     | <b>NA</b> cm.N      |
| Panel nut                  | <b>NA</b> cm.N      |
| Clamp nut                  | <b>150</b> cm.N     |

| CONNECTOR PARTS | MATERIALS        | FINISH                 | (all values are given in micrometers) |
|-----------------|------------------|------------------------|---------------------------------------|
| BODY            | BRASS            | BBR 2                  |                                       |
| OUTER CONTACT   | BRASS            | BBR 2                  |                                       |
| CENTER CONTACT  | BERYLLIUM COPPER | GOLD 0.5 OVER NICKEL 2 |                                       |
| INSULATOR       | PTFE             | -                      |                                       |
| GASKET          | -                | -                      |                                       |
| OTHERS PIECES   | BRASS            | BBR 2                  |                                       |

|                |                   |                  |
|----------------|-------------------|------------------|
| ISSUE          | CREATION DATE     | FILE PART-NUMBER |
| <b>0302N01</b> | <b>12/10/1992</b> | <b>EPC 96-07</b> |



**RADIALL®**

BONOMINI

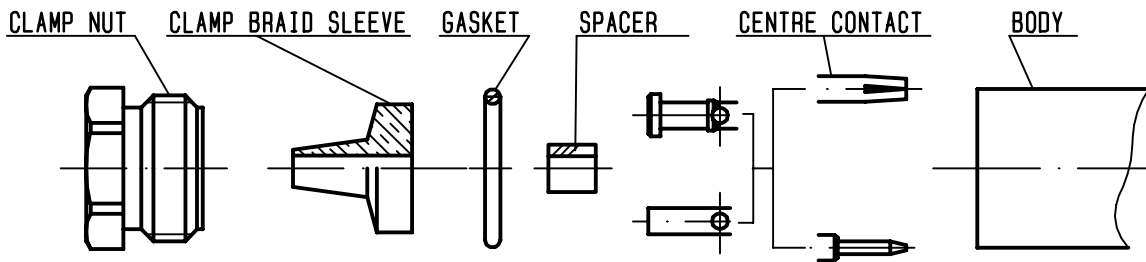
The information given here is subject to change without notice.  
Design changes may be in order to improve the product .

*Connect to the future*



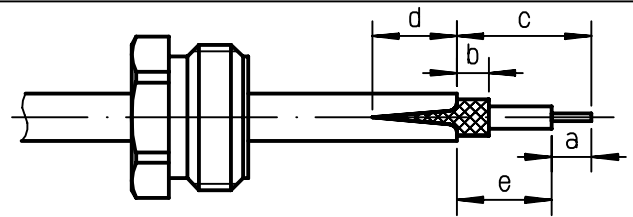
**R161.252.000**

ISSUE **0302N01** SERIES **N**



①

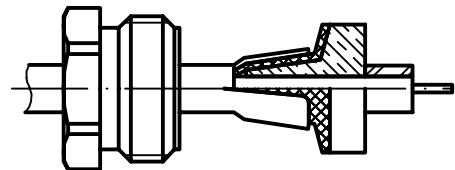
Slide clamp nut onto cable .  
Strip the cable .  
Cut the jacket ( 2 slots )  
apart if necessary .  
-



| Stripping | a     | b     | c     | d     | e     |
|-----------|-------|-------|-------|-------|-------|
| inch      | 0.157 | 0.079 | 0.315 | 0.079 | 0.157 |
| mm        | 4     | 2     | 8     | 2     | 4     |

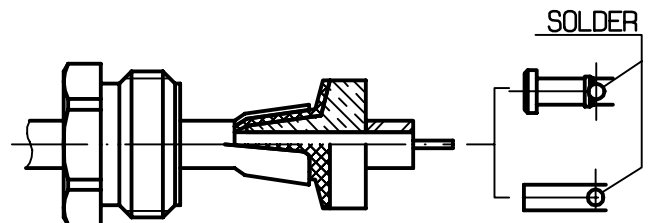
②

Slide the clamp braid sleeve between  
cable dielectric and braid .  
Cut the braid flush with the clamp  
braid sleeve .  
Slide the spacer .  
-  
-  
-



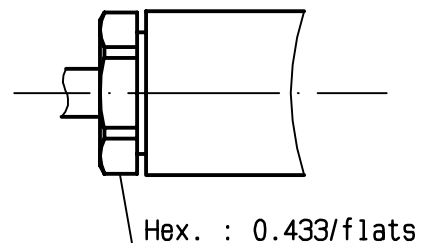
③

Solder the cable inner conductor into  
centre contact .  
Slide the back nut over the clamp  
assembly .  
-  
-  
-  
-



④

Mount the gasket into the connector .  
Screw sub-assembly into the connector  
body .  
( recommended coupling torque 13.27 in.lb )  
-



# Mouser Electronics

Authorized Distributor

Click to View Pricing, Inventory, Delivery & Lifecycle Information:

[Radial:](#)

[R161252000W](#)