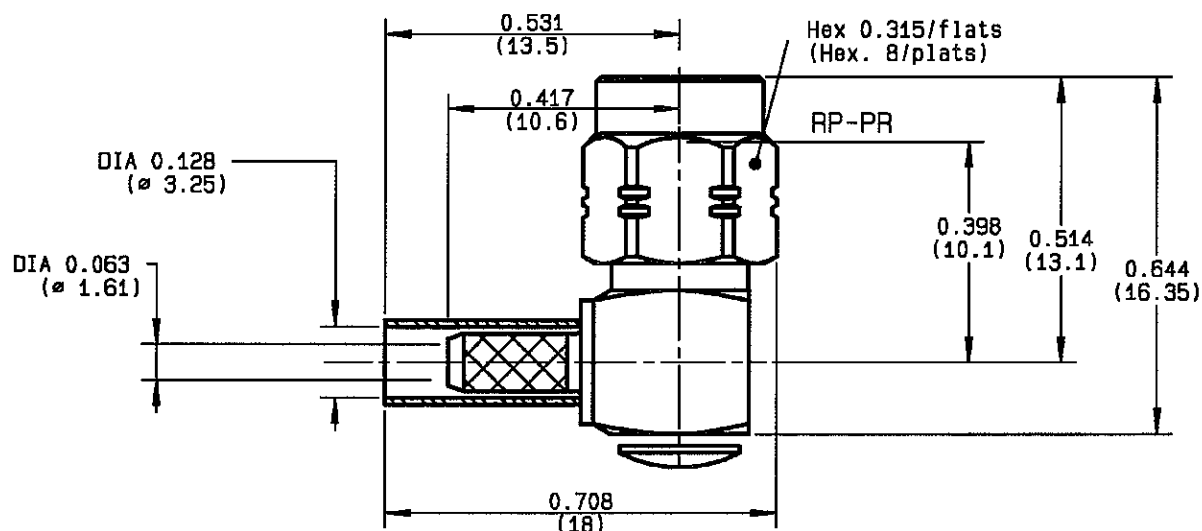


RIGHT ANGLE PLUG CRIMP TYPE
CABLE 2.6/50 S
R124.172.123
SERIES SMA-COM


NOMINAL IMPEDANCE	50 Ω
FREQUENCY RANGE	0-12.4 GHz
TEMPERATURE RATING	-65/+165 °C
V.S.W.R	1.15 + .03 x F(GHz)Maxi
RF INSERTION LOSS	0.05 \sqrt{F} (GHz) dB Maxi
VOLTAGE RATING	250 Veff Maxi
DIELECTRIC WITHSTANDING VOLTAGE	750 Veff Mini
INSULATION RESISTANCE	5000 M Ω Mini
HERMETIC SEAL	NA Atm.cm ³ /s
LEAKAGE (pressurized only)	NA
MECHANICAL DURABILITY	100 Cycles
WEIGHT	4.75 gr
SPECIFICATION	

CABLES : KX 22A
RS 188
RS 318

OTHERS CHARACTERISTICS

CABLE RETENTION	90 N Mini
CENTER CONTACT RETENTION	
Axial force - mating end	27 N Mini
Axial force - opposite end	27 N Mini
Torque	NA cm.N Mini
RECOMMENDED TORQUES	
Mating	60 cm.N
Panel nut	NA cm.N
Clamp nut	NA cm.N

CONNECTOR PARTS	MATERIALS	FINISH	(all values are given in micrometers)
BODY	BRASS	GOLD 0.2 OVER NICKEL 2	
OUTER CONTACT			
CENTER CONTACT	BRASS	GOLD 1.3 OVER COPPER 2.5	
INSULATOR	PTFE	-	
GASKET		-	
OTHERS PIECES	BRASS	GOLD 0.2 OVER NICKEL 2	

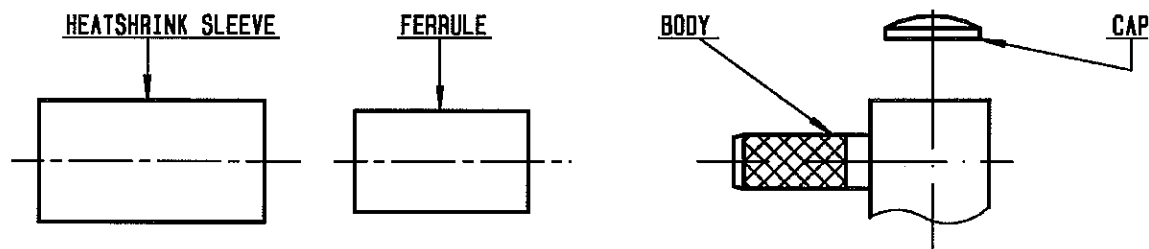
ISSUE
0708E
CREATION DATE
30/06/1993
FILE PART-NUMBER
EPC 97-03

RADIALL®

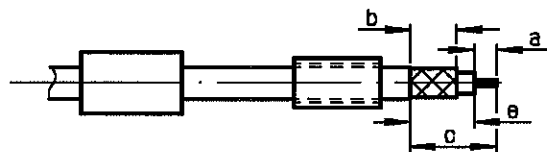
TRIQUES E.

 The information given here is subject to change without notice.
 Design changes may be in order to improve the product.

Connect to the future

**R124.172.123**ISSUE **0708E** SERIES
SMA-COM**①**

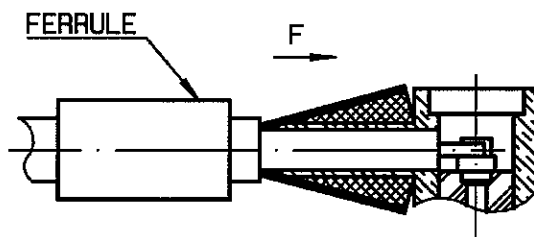
Slide heatshrink sleeve (R280.637.020 - Option) and the ferrule onto cable .
Strip the cable .
-
-



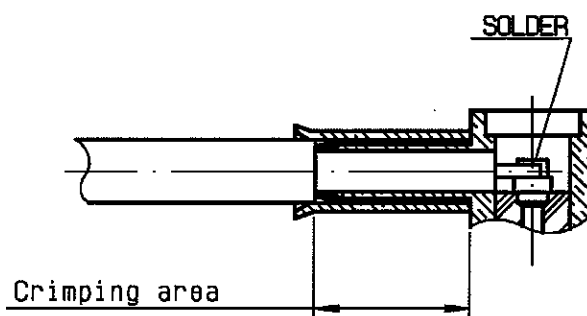
Stripping	a	b	c	d	e
inch	0.079	0.256	0.472	0	0.394
mm	2	6.5	12		10

②

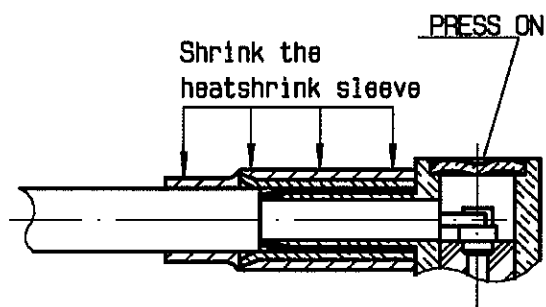
Fan the braid .
Push connector body under the braid .
Slide ferrule over braid
(in direction F)
-
-

**③**

Crimp the ferrule with crimping tool R282 211 000 (Hex. : 0.128) or crimping tool R 282 293 000 (M22520/5-01) + dies R 282 235 003 (M22520/5-03)
Solder inner conductor .

**④**

Place the cap into body.
Press cap flush or slightly below surface of body assembly .
Slide sleeve over ferrule and heatshrink in place (Option) .
-
-
-



Mouser Electronics

Authorized Distributor

Click to View Pricing, Inventory, Delivery & Lifecycle Information:

[Radiall:](#)

[R124172123W](#)