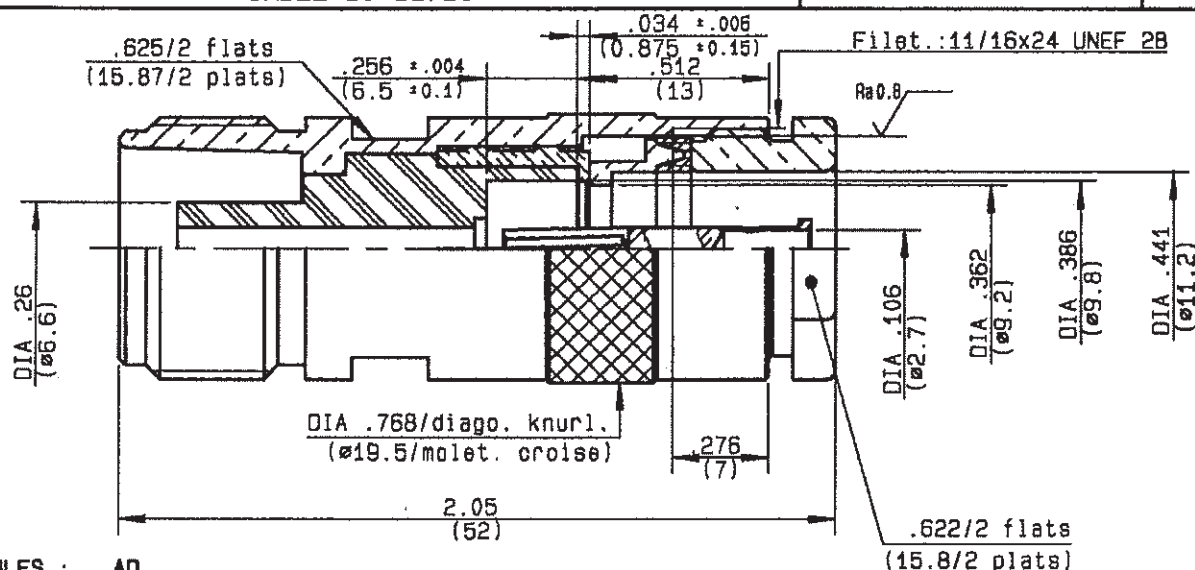


STRAIGHT CABLE JACK-CLAMP TYPE  
CABLE 10+11/50



CABLES : AD

CHARACTERISTICS

NOMINAL IMPEDANCE	25	Ω
FREQUENCY RANGE	0-3	GHz
TEMPERATURE RATING	-55/+155	°C
VSWR	TBD +	0 x F(GHz)Max1
RF INSERTION LOSS	TBD	√F(GHz) dB Max1
VOLTAGE RATING	1500	Vrms Max
DIELECTRIC WITHSTANDING VOLTAGE	5000	Vrms min
INSULATION RESISTANCE(800Vdc)	10	6 MΩ min
HERMETIC SEAL	-	cc/s
	NA	Atm.cm3/s
LEAKAGE (pressurized only)	-	psi
	NA	MPa
WEIGHT	0	Oz
	-	g

STANDARDISATION

CABLE RETENTION	44.9	lb min
	200	N
CENTER CONTACT RETENTION		
Axial force - mating end	0	lb min
	NA	N
Axial force - opposite end	6.06	lb min
	27	N
Torque (Min)	0	Inch.oz
	NA	cm.N
RECOMMENDED TORQUES		
Mating	0	inch.lb
	NA	cm.N
Panel nut	0	inch.lb
	NA	cm.N
Clamp nut	70.8	inch.lb
	800	cm.N

CONSTRUCTION

CONNECTOR PARTS	MATERIALS	FINISH
BODY	BRASS	NICKEL
OUTER CONTACT	-	-
CENTER CONTACT	BERYLLIUM COPPER	GOLD OVER NICKEL
INSULATOR	CERAMICS	-
GASKET	SILICONE RUBBER	-
COUPLING NUT	BRASS	NICKEL
-	-	-
-	-	-
-	-	-

ISSUE	REVISION No	DESCRIPTION	BY	DATE
-	-	-	-	-
-	-	-	-	-
-	-	-	-	-
1145	B	50 Ohms > 25 Ohms	TRIPPIER	08/11/11

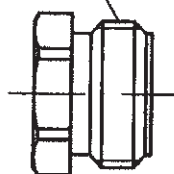
Initiated on 27/01/95

Approval by BONOMINI

The information given here is subject to change without notice. Design changes may be in order to improve the product.



CLAMP NUT



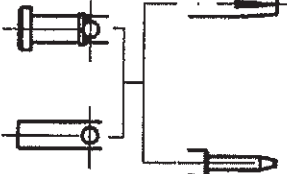
'V' GROOVE GASKET



CLAMP BRAID SLEEVE



CENTRE CONTACT



BODY



**①**

Strip the cable .

-  
-  
-  
-



Stripping	a	b	c	d	e
inch	0.236	0.598	0	0	0.283
mm	6	15.2	-	-	7.2

**②**

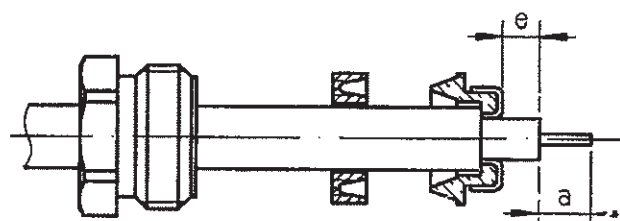
Slide the clamp nut and the 'V' groove gasket onto the cable .

Slide clamp braid sleeve over braid .

Fold back braid and trim off surplus braid .

Trim back dielectric as shown .

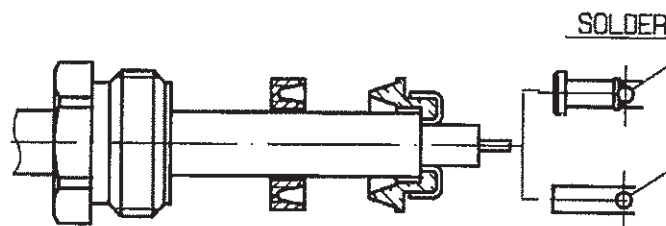
-  
-  
-



**③**

Solder the cable inner conductor into centre contact .

-  
-  
-  
-  
-  
-

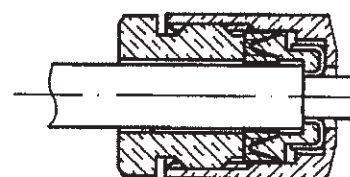


**④**

Screw sub-assembly into the connector body .

( recommended coupling torque 70.8 in.lb )

-  
-



Hex. : 0.622/flats

# Mouser Electronics

Authorized Distributor

Click to View Pricing, Inventory, Delivery & Lifecycle Information:

Radial:

[R176218150](#)