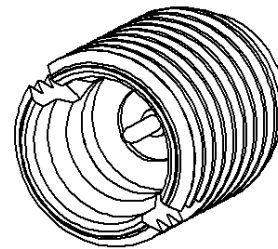
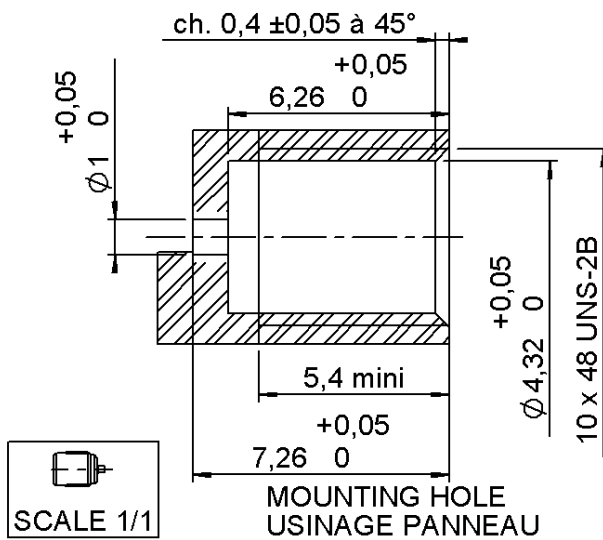
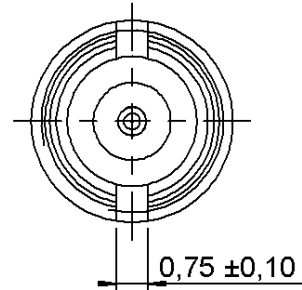
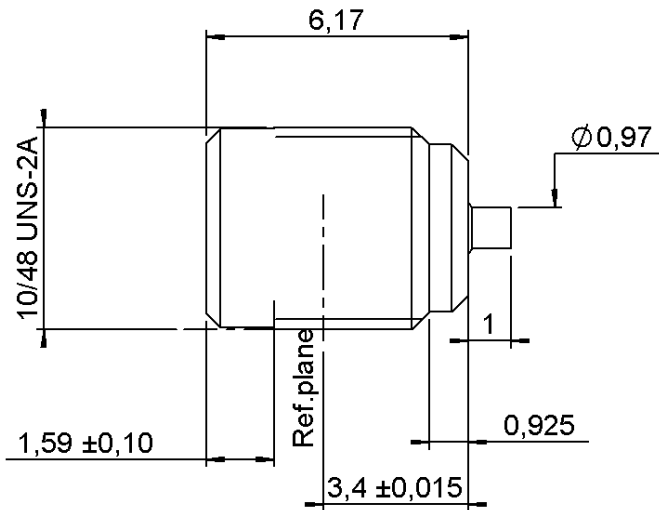


**SCREW-ON PLUG RECEPTACLE**

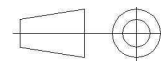
**R222.561.331**

**LIMITED DETENT**

Series : SMP



All dimensions are in mm.



COMPONENTS	MATERIALS	PLATINGS (µm)
BODY	STAINLESS STEEL	PASSIVATED
CENTER CONTACT	BERYLLIUM COPPER	GOLD 1.27 OVER NICKEL 1.27
OUTER CONTACT	-	-
INSULATOR	PTFE	-
GASKET	-	-
OTHERS PARTS	-	-
-	-	-
-	-	-

Issue : 0741 C

In the effort to improve our products, we reserve the right to make changes judged to be necessary.



**SCREW-ON PLUG RECEPTACLE**

**R222.561.331**

**LIMITED DETENT**

Series : SMP

**PACKAGING**

**SPECIFICATION**

Standard	Unit	Other
<b>100</b>	<b>'W' option</b>	<b>Contact us</b>

**ELECTRICAL CHARACTERISTICS**

**ENVIRONMENTAL**

Impedance	<b>50</b>	$\Omega$
Frequency	<b>0-40</b>	GHz
VSWR	<b>1.3 + 0,0000</b>	x F(GHz) Maxi
Insertion loss	<b>0.1</b>	$\sqrt{F}$ (GHz) dB Maxi
RF leakage	<b>65*</b>	- F(GHz) dB Maxi
Voltage rating	<b>335</b>	Veff Maxi
Dielectric withstanding voltage	<b>500</b>	Veff mini
Insulation resistance	<b>5000</b>	M $\Omega$ mini

Operating temperature	<b>-65/+165</b>	$^{\circ}$ C
Hermetic seal	<b>NA</b>	Atm.cm3/s
Panel leakage	<b>NA</b>	

**OTHERS CHARACTERISTICS**

Assembly instruction **NA**

Others :

\*3 at 26 GHz

CONFORME MIL-STD348A NOTICE3 FIG326-3

**MECHANICAL CHARACTERISTICS**

Center contact retention		
Axial force – Mating end	<b>6.68</b>	N mini
Axial force – Opposite end	<b>6.68</b>	N mini
Torque	<b>NA</b>	N.cm mini

Recommended torque		
Mating	<b>NA</b>	N.cm
Panel nut	<b>90</b>	N.cm

Mating life	<b>500</b>	Cycles mini
Weight	<b>0,5400</b>	g

\* Electrical characteristics are guaranted with  
 R280.473.100  
 or R280.473.110  
 or R280.473.120

Issue : 0741 C

In the effort to improve our products, we reserve the right to make changes judged to be necessary.



**SCREW-ON PLUG RECEPTACLE****R222.561.331****LIMITED DETENT**

Series : SMP

**ADDITIONAL INFORMATIONS  
MOUNTING AND REPLACEMENT INSTRUCTIONS**

## 1 - INFORMATIONS

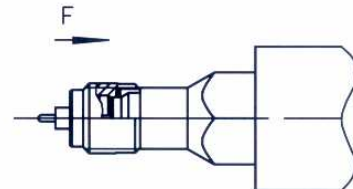
Centre contact temperature stoking do not exceeded 250 degrees celsius - (soldering 180 degrees celsius) .

## 2 - MOUNTING AND REPLACEMENT

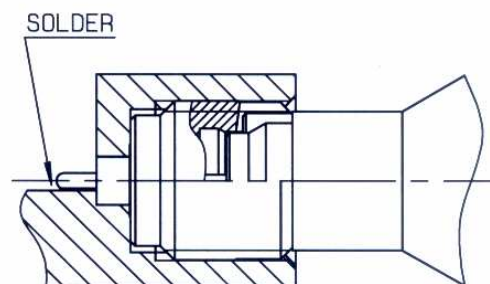
Connector must be screwed or unscrewed with adapted torque driver R282.339.002 .  
( recommended coupling torque 90 Ncm ) .  
Adapted tooling only: R282.360.002 .



2-1 - Slide on connector in F direction until it bottoms against tooling .



2-2 - Screw the whole into the housing until activation torque driver .  
(torque 90 Ncm )



2-3 - To withdraw tooling .  
Solder centre contact .

Issue : 0741 C

In the effort to improve our products, we reserve the right to make changes judged to be necessary.



# Mouser Electronics

Authorized Distributor

Click to View Pricing, Inventory, Delivery & Lifecycle Information:

Radial:

[R222561331](#) [R222561331W](#)